

**Sierra**

# REFRIGERATION SYSTEMS 1/2 THROUGH 30 HP AIR & ELECTRIC DEFROST



Sierra, a new concept in 1/2 through 30 HP refrigeration systems.

**Features:**

- Increased energy savings
- Increased capacity
- Built-in liquid refrigerant sub cooler
- Built-in refrigerant charging gauge
- Increased condenser surface
- Reduced refrigerant charge
- Extended compressor life
- Floating head pressure systems

# SIERRA

## Table of Contents

• Standard Features / Nomenclature .....	3
• What is Sierra .....	4
• Energy Savings Calculations .....	5

### High Temperature Systems

• <b>35°F Room Temperature</b>	
MiniCon (Hermetic/Semi-hermetic)	
All-Temp <sup>2</sup> B .....	6
MiniCon / D Series (Scroll)	
All-Temp <sup>2</sup> B / Inter-Temp / Ultra-Temp .....	7
D Series (Discus)	
Inter-Temp / Ultra-Temp .....	8
V Series (Discus)	
Ultra-Temp .....	9
• <b>28°F Room Temperature</b>	
MiniCon (Hermetic/Semi-hermetic)	
All-Temp <sup>2</sup> B .....	10
MiniCon / D Series (Scroll / Discus)	
All-Temp <sup>2</sup> B / Inter-Temp / Ultra-Temp .....	11
D Series (Discus)	
Inter-Temp / Ultra-Temp .....	12
V Series (Discus)	
Ultra-Temp .....	13
• <b>20°F Room Temperature</b>	
MiniCon (Hermetic/Semi-hermetic)	
All-Temp <sup>2</sup> B .....	14
D Series (Discus / Scroll)	
Inter-Temp .....	15

• <b>Evaporator Data</b>	
All-Temp <sup>2</sup> B .....	28
Inter-Temp .....	29
Ultra-Temp .....	30-31
• <b>Condensing Unit Data</b>	
MiniCon .....	32-33
D Series .....	34
V Series .....	35
• <b>Sierra Piping Schematic</b> .....	Back Cover

### Low Temperature Systems

• <b>0°F Room Temperature</b>	
MiniCon (Hermetic/Semi-hermetic/Scroll)	
All-Temp <sup>2</sup> B .....	16
D Series (Discus)	
All-temp <sup>2</sup> B / Inter-Temp .....	17
D Series (Discus / Scroll)	
Inter-Temp / Ultra-Temp .....	18
V Series (Discus)	
Ultra-Temp .....	19
• <b>-10°F Room Temperature</b>	
MiniCon (Hermetic/Semi-hermetic/Scroll)	
All-Temp <sup>2</sup> B .....	20
D Series (Discus)	
All-temp <sup>2</sup> B / Inter-Temp .....	21
D Series (Discus / Scroll)	
Inter-Temp / Ultra-Temp .....	22
V Series (Discus)	
Ultra-Temp .....	23
• <b>-20°F Room Temperature</b>	
MiniCon (Hermetic/Semi-hermetic/Scroll)	
All-Temp <sup>2</sup> B .....	24
D Series (Discus)	
All-temp <sup>2</sup> B / Inter-Temp .....	25
D Series (Discus / Scroll)	
Inter-Temp / Ultra-Temp .....	26
V Series (Discus)	
Ultra-Temp .....	27

## Sierra™

The **Sierra™** system is ideal for a variety of commercial applications such as convenience stores, restaurants and fast food outlets. **Sierra's** substantial savings in operating costs make it the **right choice** for commercial warehouses.

**Sierra™** offers a winning combination of energy savings, lower installed costs, and increased reliability. Models are available from 1/2 to 30 horsepower in low, medium, and high temperature ranges. Systems are available with HCFC R-22 and environmentally friendly HFC R-404A. All condensing units are intended for outdoor installation.

All **Sierra™** systems are shipped with piping accessories factory installed. This saves on installation time, and takes the guess work out of selecting components. **Sierra™** systems come complete with the following features and accessories:

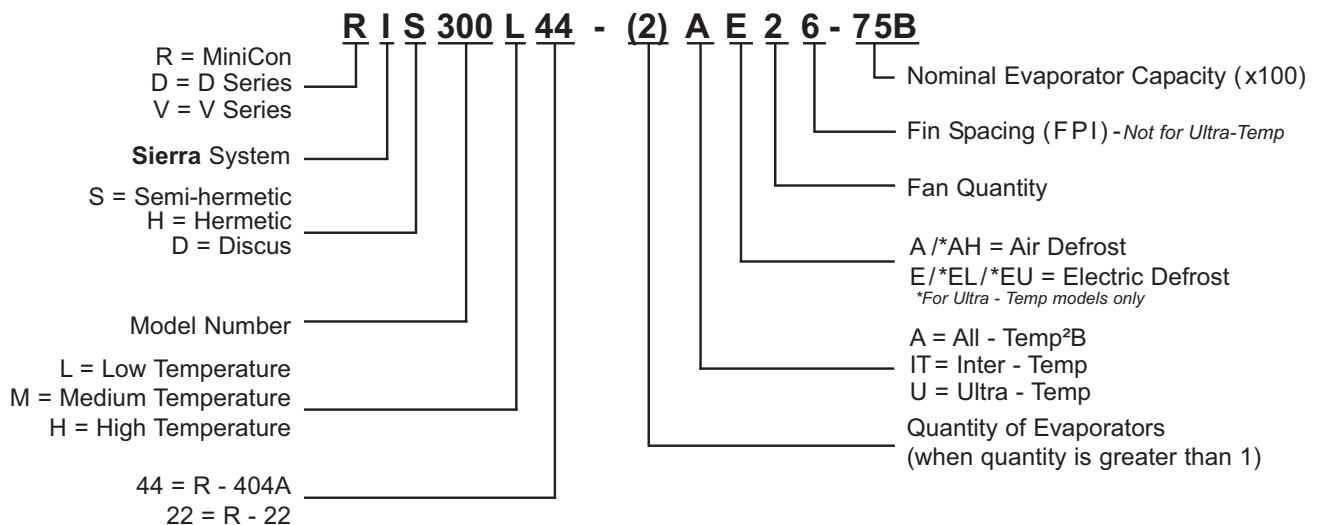
### Standard Features

- Semi-hermetic, hermetic, discus, or Scroll compressors
- Oil pressure control where applicable
- High and low pressure controls
- Crankcase heater
- Low profile galvanized steel housing
- Copper tube, Aluminum fin condenser
- Vibrasorbers (semi-hermetic models only)
- Large electrical control panel
- Compressor contractor or start kit
- Liquid line charging valve
- Electric defrost provisions on low temp evaporator(s)
- Specially sized balanced port expansion valve(s) (mounted)
- Liquid solenoid valve(s) (mounted)
- Room thermostat
- Liquid line filter-drier (mounted)
- Sightglass with moisture indicator (mounted)
- Suction line filter (mounted)
- **Russ Saver™** floating head pressure control
- Liquid refrigerant subcooling circuit
- Fan cycle control (dual fan condensing unit only)

### Options

- Copper finned condenser and evaporator coils
- Coated condenser coils
- Suction accumulator
- Oil separator
- Air defrost time clock
- PSC evaporator fan motors
- Adjustable defrost control

### MODEL NUMBER NOMENCLATURE



# SIERRA

## What is Sierra™?

**Sierra™** is a unique concept in commercial refrigeration that incorporates a number of features which enhance performance, provide energy savings over conventional systems and increase of reliability, thus saving you money.

The heart of the **Sierra™** system is a design that eliminates the need for a refrigerant receiver by providing built-in storage capacity in the condenser section of the condensing unit. This small change in the unit has opened the door for adding new features that are not possible with traditional refrigeration systems.

## Increased Performance

**Sierra™** maintains traditional refrigerant storage capacity while increasing the condenser capacity. It actually gives the same size condenser up to 20% more capability by providing a potential 50% increase in condenser surface. This feature reduces condensing temperatures when compared to conventional systems. In addition, **Sierra™** increases compressor life by reducing the operating head pressure.

## Increased Energy Savings

The increase in the condenser size and lower operating head pressure provide an initial energy savings of up to 10%. In order to take full advantage of Sierra's large condenser, a subcooling section and **Russ Saver™** floating head pressure features are incorporated to save even more energy.

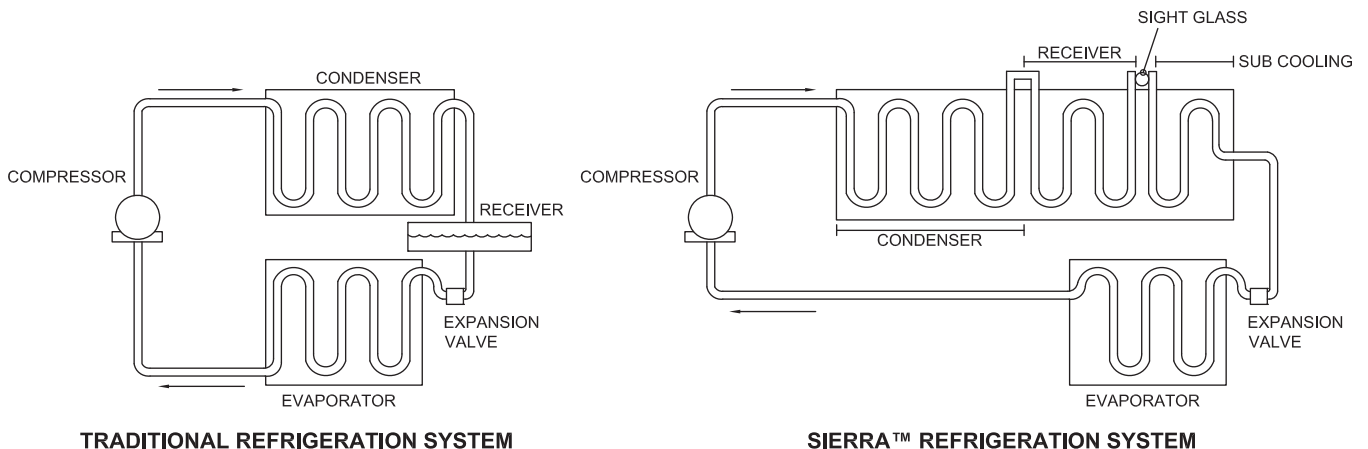
The **Russ Saver™** feature provides up to 30% in additional energy savings during low ambient conditions. Additionally, it also supplies subcooled liquid refrigerant to the expansion valve to maintain optimum valve performance. Thus, **Sierra™** can offer energy savings of up to 40% over conventional refrigeration systems. (See page 5 for calculation of Projected Monthly Savings.)

## Less Refrigerant

**Sierra™** requires up to 20% less refrigerant to operate while maintaining continuous peak performance. This is accomplished several ways:

- 1) by dispensing with the conventional receiver, a minimum refrigerant charge is not required to maintain a liquid seal in the receiver.
- 2) by assuring that only liquid refrigerant is entering into the subcooler section of the condenser because ambient air is flowing over the receiver section of the condenser coil.
- 3) by eliminating the useless overcharging of the system with refrigerant, often a result of varied industry practices. In typical systems, the receiver, its outlet valve and piping will create bubbles in the sightglass due to pressure drop they create.

This in turn results in the addition of extra refrigerant by the installer in an attempt to clear the sightglass. By eliminating the receiver and its piping components, the clearing of the sightglass occurs much faster. **Sierra's** critically positioned sightglass signals when the ideal charge has been attained, thus saving refrigerant. With today's refrigerant costs, **Sierra™** makes even more sense.



**Sierra™**

**ENERGY SAVINGS CALCULATIONS**

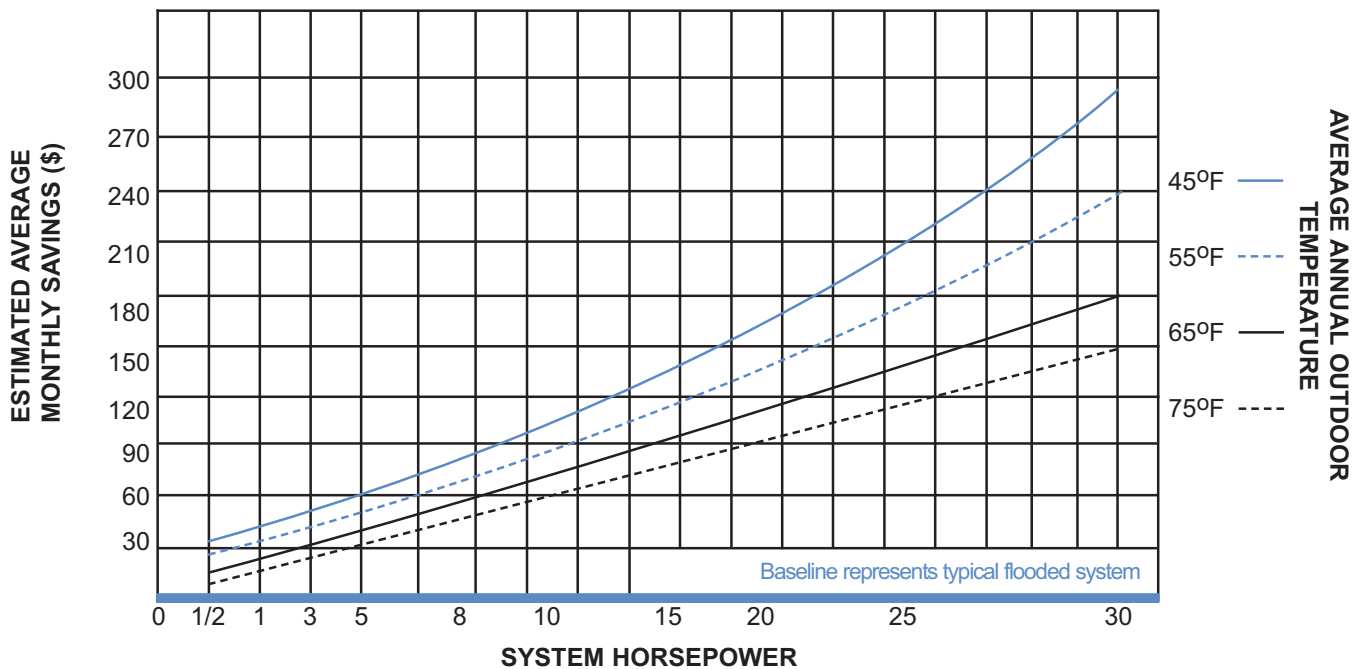
To estimate your average monthly savings:

- 1) Select a **SIERRA™** system that meets your refrigeration requirements.
- 2) Determine the Average Annual Outdoor Air Temperature from the table below.
- 3) Using the Projected Monthly Savings graph, locate the system nominal horsepower at the bottom of the graph (the nominal system horsepower can be derived from the model number nomenclature).
- 4) Go straight up to the appropriate Average Annual Outdoor Air Temperature curve, and then go horizontally to the left to determine your Estimated Monthly Average Savings.
- 5) To calculate your Estimated Monthly Saving for an energy cost other than \$0.10 KWH, divide the Estimated Monthly Savings by 0.10 and multiply by your local electric utility rate.
- 6) To determine your Estimated Yearly Savings, multiple the Estimated Monthly Savings number by 12.

**AVERAGE ANNUAL OUTDOOR AIR TEMPERATURE**

STATE & STATION	ANNUAL AVG. °F	STATE & STATION	ANNUAL AVG. °F	STATE & STATION	ANNUAL AVG. °F	STATE & STATION	ANNUAL AVG. °F		
AL Mobile	70	IA Des Moines	50	NM Albuquerque	60	VT Burlington	45		
AK Juneau	40	KS Wichita	55	NY Buffalo	45	VA Richmond	60		
AZ Phoenix	70	KY Louisville	55	NY New York	55	WA Seattle	50		
AR Little Rock	60	LA New Orleans	70	NC Charlotte	60	WV Charleston	55		
CA Los Angeles	60	ME Portland	45	ND Bismarck	45	WI Milwaukee	45		
	San Francisco	55	MD Baltimore	55	OH Cleveland	50	WY Cheyenne	45	
CO Denver	50	MA Boston	50		Columbus	50		CANADA	
CT Hartford	50	MI Detroit	50	OK Oklahoma City	60		ALB Calgary	40	
DE Wilmington	55	MN Sault St. Marie	40	OR Portland	55		B.C. Vancouver	50	
D.C. Washington	55		Minneapolis	45	PA Philadelphia	50		MAN Winnipeg	35
FL Jacksonville	70	MS Jackson	65	RI Providence	50		N.B. St. John	45	
	Miami	75	MO St. Louis	55	SC Columbia	65		N.F. St. John's	40
GA Atlanta	60	MT Great Falls	45	SD Sioux Falls	45		N.S. Halifax	45	
HI Honolulu	75	NE Omaha	50	TN Nashville	60		ONT Toronto	45	
ID Boise	50	NV Reno	50	TX Dallas	65		QUE Montreal	45	
IL Chicago	50	NH Concord	45		El Paso	65		YUK Dawson	25
IN Indianapolis	50	NJ Atlantic City	55	UT Salt Lake City	50				

**SIERRA PROJECTED MONTHLY SAVINGS @ \$0.10/KWH**



**+35°F Room Temperature**

	MODEL NUMBER			AMBIENT TEMPERATURE									
				80°		90°		95°		100°		110°	
	Cond. Unit	#	Evaporator	BTU/hr	TD	BTU/hr	TD	BTU/hr	TD	BTU/hr	TD	BTU/hr	TD
H E R M E T I C	RIH 051 H22	(1)	AA 18-66B	7,020	10.6	6,620	10.0	6,470	9.8	6,310	9.6	5,930	9.0
	RIH 075 H22	(1)	AA 18-66B	7,660	11.6	7,220	10.9	7,050	10.7	6,820	10.3	6,380	9.7
	RIH 075 H22	(1)	AA 28-76B	7,870	10.4	7,420	9.8	7,250	9.5	7,010	9.2	6,540	8.6
	RIH 100 H22	(1)	AA 28-97B	11,270	11.7	10,630	11.0	10,380	10.7	10,050	10.4	9,390	9.7
	RIH 100 H22	(1)	AA 28-106B	11,470	10.8	10,820	10.2	10,560	10.0	10,220	9.6	9,540	9.0
	RIH 151 H22	(1)	AA 28-134B	14,940	11.1	14,090	10.5	13,860	10.3	13,520	10.1	12,680	9.5
	RIH 151 H22	(2)	AA 28-66B	14,900	11.2	14,050	10.6	13,820	10.5	13,480	10.2	12,650	9.6
	RIH 201 H22	(1)	AA 38-195B	20,420	10.5	19,260	9.9	18,970	9.7	18,510	9.5	17,290	8.9
	RIH 201 H22	(2)	AA 28-97B	20,400	10.5	19,240	9.9	18,950	9.8	18,490	9.5	17,280	8.9
	RIH 251 H22	(1)	AA 48-264B	28,200	10.7	26,600	10.1	25,960	9.8	25,330	9.6	22,650	8.6
	RIH 251 H22	(2)	AA 28-122B	27,770	11.3	26,190	10.7	25,570	10.5	24,960	10.2	22,360	9.2
	RIH 301 H22	(1)	AA 68-318B	32,960	10.4	31,090	9.8	30,590	9.6	29,850	9.4	28,310	8.9
	RIH 301 H22	(2)	AA 38-160B	33,000	10.3	31,130	9.7	30,630	9.6	29,880	9.3	28,340	8.9
	RIH 401 H22	(1)	AA 68-390B	44,970	11.6	42,420	10.9	41,770	10.7	40,780	10.5	40,000	10.3
	RIH 401 H22	(2)	AA 48-212B	45,780	10.8	43,180	10.2	42,500	10.0	41,470	9.8	40,680	9.6
	RIH 500 H22	(2)	AA 48-212B	49,060	11.6	46,280	10.9	45,360	10.7	44,240	10.4	42,740	10.1
	RIH 050 M44	(1)	AA 18-66B	6,850	10.4	6,460	9.8	6,290	9.5	6,120	9.3	5,750	8.7
	RIH 075 M44	(1)	AA 28-97B	10,090	10.4	9,510	9.8	9,270	9.5	9,000	9.3	8,440	8.7
	RIH 101 M44	(1)	AA 28-122B	13,600	11.1	12,830	10.5	12,500	10.2	12,150	10.0	11,400	9.3
	RIH 150 M44	(1)	AA 38-160B	17,610	11.0	16,610	10.4	16,190	10.1	15,740	9.8	14,780	9.2
	RIH 201 M44	(1)	AA 48-264B	28,050	10.6	26,460	10.0	25,800	9.8	25,080	9.5	23,550	8.9
RIH 201 M44	(2)	AA 28-122B	27,640	11.3	26,070	10.7	25,420	10.4	24,720	10.1	23,230	9.5	
RIH 300 M44	(1)	AA 58-275B	30,710	11.1	28,970	10.5	28,260	10.3	27,490	10.0	25,830	9.4	
RIH 300 M44	(2)	AA 28-134B	30,550	11.3	28,820	10.7	28,120	10.5	27,350	10.2	25,710	9.6	
RIH 400 M44	(1)	AA 68-390B	39,160	10.1	36,940	9.5	36,020	9.2	35,010	9.0	32,850	8.4	
RIH 400 M44	(2)	AA 38-160B	37,750	11.8	35,610	11.1	34,740	10.9	33,780	10.6	31,750	9.9	
RIH 500 M44	(2)	AA 48-264B	54,870	10.4	51,760	9.8	50,450	9.6	49,010	9.3	46,190	8.7	
S E M I - H E R M E T I C	RIS 050 H22	(1)	AA 18-41B	4,690	11.4	4,420	10.8	4,310	10.5	4,170	10.2	3,890	9.5
	RIS 075 H22	(1)	AA 18-66B	7,680	11.7	7,240	11.0	7,080	10.7	6,850	10.4	6,410	9.7
	RIS 075 H22	(1)	AA 28-76B	7,910	10.4	7,460	9.8	7,280	9.6	7,050	9.3	6,580	8.6
	RIS 100 H22	(1)	AA 28-97B	10,790	11.1	10,170	10.5	9,930	10.2	9,600	9.9	8,960	9.2
	RIS 100 H22	(1)	AA 28-106B	10,950	10.3	10,330	9.7	10,080	9.5	9,750	9.2	9,080	8.6
	RIS 150 H22	(1)	AA 28-122B	14,310	11.8	13,500	11.1	13,190	10.8	12,770	10.5	11,930	9.8
	RIS 150 H22	(1)	AA 28-134B	14,590	10.9	13,760	10.3	13,440	10.0	13,000	9.7	12,130	9.0
	RIS 200 H22	(1)	AA 38-195B	20,310	10.4	19,160	9.8	18,700	9.6	18,080	9.3	16,870	8.6
	RIS 200 H22	(2)	AA 28-97B	20,290	10.5	19,140	9.9	18,680	9.6	18,070	9.3	16,850	8.7
	RIS 300 H22	(1)	AA 48-264B	30,060	11.3	28,350	10.7	27,690	10.5	26,790	10.1	25,020	9.5
	RIS 300 H22	(1)	AA 58-275B	30,300	11.0	28,580	10.4	27,910	10.1	27,000	9.8	25,200	9.2
	RIS 300 H22	(2)	AA 28-134B	30,150	11.2	28,440	10.6	27,770	10.4	26,870	10.0	25,080	9.4
	RIS 400 H22	(1)	AA 68-390B	42,650	10.9	40,230	10.3	39,270	10.1	37,980	9.7	35,430	9.1
	RIS 400 H22	(2)	AA 38-195B	42,650	10.9	40,230	10.3	39,270	10.1	37,980	9.7	35,430	9.1
	RIS 400 M22	(1)	AA 68-318B	36,890	11.6	34,800	10.9	33,980	10.7	33,020	10.4	30,960	9.7
	RIS 400 M22	(2)	AA 38-160B	36,950	11.6	34,850	10.9	34,020	10.6	33,060	10.3	30,990	9.7
	RIS 500 H22	(2)	AA 38-195B	49,210	11.6	46,420	10.9	45,320	10.7	44,130	10.4	41,160	9.7
	RIS 500 M22	(1)	AA 68-318B	58,550	11.1	55,230	10.5	53,890	10.2	52,300	9.9	48,840	9.2
	RIS 050 M44	(1)	AA 18-53B	5,550	10.5	5,230	9.9	5,090	9.6	4,960	9.4	4,650	8.8
	RIS 100 M44	(1)	AA 28-97B	9,880	10.2	9,320	9.6	9,080	9.4	8,850	9.1	8,320	8.6
	RIS 200 M44	(1)	AA 38-160B	17,010	10.6	16,040	10.0	15,630	9.8	15,230	9.5	14,270	8.9
	RIS 200 M44	(2)	AA 28-76B	16,870	11.1	15,910	10.5	15,500	10.2	15,100	9.9	14,160	9.3
	RIS 300 M44	(1)	AA 48-264B	30,530	11.6	28,800	10.9	28,080	10.6	27,360	10.4	25,670	9.7
	RIS 300 M44	(1)	AA 58-275B	30,760	11.1	29,010	10.5	28,280	10.3	27,550	10.0	25,840	9.4
RIS 300 M44	(2)	AA 28-134B	30,620	11.4	28,880	10.8	28,150	10.5	27,430	10.2	25,730	9.6	
RIS 400 M44	(1)	AA 68-318B	36,200	11.3	34,150	10.7	33,280	10.5	32,420	10.2	30,410	9.6	
RIS 400 M44	(2)	AA 38-160B	36,250	11.3	34,190	10.7	33,320	10.4	32,460	10.1	30,440	9.5	

**+35°F Room Temperature**

Comp	MODEL NUMBER			AMBIENT TEMPERATURE									
				80°		90°		95°		100°		110°	
	Cond. Unit	#	Evaporator	BTU/hr	TD	BTU/hr	TD	BTU/hr	TD	BTU/hr	TD	BTU/hr	TD
S C R O L	RIO 200 M44 (1)	AA 38-195B	22,020	11.2	20,770	10.6	20,250	10.4	19,550	10.0	18,700	9.6	
	RIO 200 M44 (1)	AA 48-212B	22,280	10.5	21,010	9.9	20,480	9.7	19,770	9.3	18,880	8.9	
	RIO 200 M44 (2)	AA 28-97B	22,010	11.3	20,760	10.7	20,240	10.4	19,540	10.1	18,690	9.6	
	RIO 200 M44 (2)	AA 28-106B	22,280	10.5	21,010	9.9	20,480	9.7	19,770	9.3	18,880	8.9	
	RIO 250 M44 (1)	AA 48-264B	27,470	10.4	25,910	9.8	25,260	9.6	24,380	9.2	23,280	8.8	
	RIO 250 M44 (2)	AA 28-122B	27,170	11.1	25,630	10.5	25,070	10.2	24,120	9.9	23,070	9.5	
	RIO 300 M44 (1)	AA 48-264B	30,990	11.8	29,230	11.1	28,500	10.8	27,520	10.4	26,340	10.0	
	RIO 300 M44 (1)	AA 58-275B	31,170	11.3	29,400	10.7	28,670	10.4	27,670	10.1	26,470	9.6	
	RIO 300 M44 (2)	AA 28-134B	31,050	11.6	29,290	10.9	28,560	10.7	27,580	10.3	26,390	9.8	
	RIO 301 M44 (1)	AA 68-318B	37,120	11.7	35,010	11.0	34,130	10.7	32,950	10.4	31,160	9.8	
	RIO 301 M44 (2)	AA 38-160B	37,150	11.6	35,040	10.9	34,160	10.7	32,980	10.3	31,190	9.7	
	RIO 400 M44 (1)	AA 68-390B	43,910	11.2	41,420	10.6	40,390	10.4	38,990	10.0	36,870	9.4	
	RIO 400 M44 (2)	AA 38-195B	43,910	11.2	41,420	10.6	40,390	10.4	38,990	10.0	36,870	9.4	
	RIO 400 M44 (2)	AA 48-212B	44,430	10.5	41,910	9.9	40,850	9.6	39,430	9.3	37,260	8.8	
	RIO 600 M44 (2)	AA 48-212B	50,300	11.9	47,450	11.2	46,260	10.9	44,860	10.6	41,800	9.9	
	RIO 600 M44 (2)	AA 48-264B	51,740	9.8	48,810	9.2	47,550	9.0	46,070	8.7	42,850	8.1	
RIO 650 M44 (2)	AA 48-264B	60,530	11.4	57,100	10.8	55,660	10.5	53,960	10.2	50,260	9.5		
RIO 650 M44 (2)	AA 58-275B	60,860	11.0	57,410	10.4	55,950	10.2	54,230	9.9	50,500	9.2		
S C R O L	DIO 7 M44 (1)	ITA 38-690	69,160	10.1	65,240	9.5	63,600	9.2	61,960	9.0	56,340	8.2	
	DIO 7 M44 (2)	ITA 38-320	68,410	10.7	64,530	10.1	62,930	9.8	61,310	9.6	55,810	8.7	
	DIO 7 M44 (3)	ITA 28-210	68,250	10.8	64,380	10.2	62,780	10.0	61,180	9.7	55,700	8.8	
	DIO 7 M44 (4)	ITA 28-151	67,800	11.2	63,960	10.6	62,380	10.3	60,800	10.1	55,380	9.2	
	DIO 8 M44 (1)	ITA 38-690	79,170	11.4	74,680	10.8	72,840	10.6	70,990	10.3	64,690	9.4	
	DIO 8 M44 (2)	ITA 28-410	81,220	9.9	76,620	9.3	74,690	9.1	72,750	8.9	66,150	8.1	
	DIO 8 M44 (3)	ITA 38-260	80,650	10.3	76,080	9.7	74,180	9.5	72,270	9.3	65,740	8.4	
	DIO 10 M44 (2)	ITA 28-450	108,200	12.0	102,070	11.3	99,550	11.1	97,010	10.8	88,370	9.8	
	DIO 10 M44 (2)	ITA 38-540	111,100	10.3	104,810	9.7	102,160	9.5	99,500	9.2	90,420	8.4	
	DIO 10 M44 (3)	ITA 38-320	109,270	11.3	103,080	10.7	100,510	10.5	97,930	10.2	89,120	9.3	
	DIO 10 M44 (4)	ITA 38-260	110,530	10.6	104,270	10.0	101,640	9.8	99,000	9.5	90,010	8.7	
	DIO 13 M44 (2)	ITA 38-540	128,850	11.9	121,550	11.2	118,560	11.0	115,540	10.7	105,270	9.7	
	DIO 13 M44 (3)	ITA 28-410	131,390	10.7	123,950	10.1	120,840	9.8	117,710	9.6	107,070	8.7	
	DIO 7 M44 (1)	UAH 3-648	68,530	10.6	64,650	10.0	63,040	9.7	61,420	9.5	55,900	8.6	
	DIO 7 M44 (1)	UAH 2-300	67,730	11.2	63,890	10.6	62,320	10.4	60,740	10.1	55,330	9.2	
	DIO 8 M44 (1)	UAH 3-736	79,960	10.8	75,430	10.2	73,560	10.0	71,680	9.7	65,250	8.9	
	DIO 8 M44 (2)	UAH 2-365	79,870	10.9	75,340	10.3	73,470	10.1	71,590	9.8	65,180	8.9	
	DIO 10 M44 (1)	UAH 4-980	109,600	11.1	103,390	10.5	100,810	10.3	98,210	10.0	89,360	9.1	
DIO 10 M44 (2)	UAH 2-490	109,600	11.1	103,390	10.5	100,810	10.3	98,210	10.0	89,360	9.1		
DIO 10 M44 (2)	UAH 3-530	110,820	10.5	104,540	9.9	101,900	9.6	99,250	9.4	90,220	8.5		
DIO 13 M44 (1)	UAH 4-1100	129,220	11.8	121,900	11.1	118,890	10.8	115,860	10.5	105,530	9.6		
DIO 13 M44 (2)	UAH 3-530	128,460	12.1	121,180	11.4	118,210	11.1	115,210	10.9	105,000	9.9		
DIO 13 M44 (2)	UAH 3-648	132,360	10.2	124,860	9.6	121,710	9.4	118,530	9.1	107,740	8.3		

**+35°F Room Temperature**

Comp	MODEL NUMBER			AMBIENT TEMPERATURE									
				80°		90°		95°		100°		110°	
	Cond. Unit	#	Evaporator	BTU/hr	TD	BTU/hr	TD	BTU/hr	TD	BTU/hr	TD	BTU/hr	TD
D I S C U S	DID 5H22	(1)	ITA 38-540	62,040	11.4	58,520	10.8	57,100	10.6	55,680	10.3	50,810	9.4
	DID 5H22	(2)	ITA 38-260	61,620	11.9	58,130	11.2	56,730	10.9	55,330	10.6	50,510	9.7
	DID 5H22	(2)	ITA 38-320	63,770	10.0	60,160	9.4	58,670	9.2	52,040	8.9	52,040	8.1
	DID 7H22	(2)	ITA 28-410	88,810	10.8	83,780	10.2	81,720	10.0	79,650	9.7	72,570	8.8
	DID 7H22	(2)	ITA 28-450	90,090	10.0	84,990	9.4	82,870	9.2	80,740	9.0	73,470	8.2
	DID 8H22	(2)	ITA 28-450	104,380	11.6	98,470	10.9	96,070	10.7	93,650	10.4	85,400	9.5
	DID 8H22	(2)	ITA 38-540	107,380	10.0	101,300	9.4	98,770	9.1	96,210	8.9	87,530	8.1
	DID 10H22	(2)	ITA 38-540	123,980	11.4	116,960	10.8	114,100	10.6	111,210	10.3	101,360	9.4
DID 12H22	(2)	ITA 38-690	148,830	10.8	140,400	10.2	136,930	9.9	133,440	9.7	121,530	8.8	
D I S C U S	DID 5M44	(1)	ITA 38-540	62,650	11.6	59,100	10.9	57,670	10.7	56,230	10.4	51,320	9.5
	DID 5M44	(2)	ITA 38-260	62,230	12.0	58,700	11.3	57,290	11.0	55,870	10.7	51,020	9.8
	DID 5M44	(2)	ITA 38-320	64,410	10.1	60,760	9.5	59,260	9.3	57,740	9.0	52,570	8.2
	DID 6M44	(1)	ITA 38-690	78,550	11.3	74,100	10.7	72,310	10.5	70,510	10.2	64,350	9.3
	DID 6M44	(2)	ITA 28-410	77,480	12.1	73,090	11.4	71,350	11.1	69,590	10.9	63,590	9.9
	DID 7M44	(2)	ITA 28-410	89,820	10.9	84,730	10.3	82,660	10.1	80,560	9.8	73,420	8.9
	DID 7M44	(2)	ITA 28-450	91,130	10.1	85,970	9.5	83,830	9.3	81,680	9.1	74,340	8.3
	DID 8M44	(2)	ITA 28-450	105,530	11.8	99,550	11.1	97,130	10.8	94,690	10.5	86,370	9.6
DID 8M44	(2)	ITA 38-540	108,600	10.1	102,450	9.5	99,890	9.2	97,310	9.0	88,540	8.2	
DID 10M44	(2)	ITA 38-540	125,280	11.6	118,180	10.9	115,290	10.7	112,380	10.4	105,450	9.5	
DID 12M44	(2)	ITA 38-690	150,870	10.9	142,330	10.3	138,820	9.8	135,270	9.8	123,200	8.9	
D I S C U S	DID 5H22	(1)	UAH 3-530	61,830	11.7	58,330	11.0	56,920	10.7	55,510	10.5	50,660	9.6
	DID 5H22	(2)	UAH 2-300	63,140	10.5	59,560	9.9	58,090	9.7	56,620	9.4	51,590	8.6
	DID 7H22	(1)	UAH 3-736	87,220	11.9	82,280	11.2	80,290	10.9	78,290	10.6	71,440	9.7
	DID 7H22	(1)	UAH 4-866	89,570	10.4	84,500	9.8	82,400	9.5	80,300	9.3	73,110	8.4
	DID 7H22	(2)	UAH 2-433	89,570	10.4	84,500	9.8	82,400	9.5	80,300	9.3	73,110	8.4
	DID 8H22	(1)	UAH 4-866	103,690	12.0	97,820	11.3	95,460	11.0	93,070	10.7	84,910	9.8
	DID 8H22	(1)	UAH 4-980	105,840	10.8	99,840	10.2	97,370	9.9	94,890	9.7	86,430	8.8
	DID 8H22	(2)	UAH 2-490	105,840	10.8	99,840	10.2	97,370	9.9	94,890	9.7	86,430	8.8
	DID 10H22	(1)	UAH 4-1100	124,350	11.3	117,310	10.7	114,430	10.4	111,530	10.1	101,620	9.2
	DID 10H22	(2)	UAH 3-530	123,600	11.7	116,600	11.0	113,760	10.7	110,890	10.5	101,090	9.5
DID 12H22	(1)	UAH 4-1452	149,980	10.3	141,490	9.7	137,970	9.5	134,420	9.3	122,350	8.4	
DID 12H22	(2)	UAH 3-648	147,340	11.3	139,000	10.7	135,600	10.5	132,170	10.2	120,480	9.3	
DID 12H22	(2)	UAH 3-736	150,290	10.2	141,780	9.6	138,240	9.4	134,680	9.1	122,560	8.3	
D I S C U S	DID 5M44	(1)	UAH 3-530	62,440	11.8	58,900	11.1	57,480	10.8	56,060	10.6	51,170	9.6
	DID 5M44	(1)	UAH 3-648	64,540	10.0	60,880	9.4	59,370	9.2	57,840	8.9	52,650	8.1
	DID 5M44	(2)	UAH 2-300	63,760	10.6	60,150	10.0	58,680	9.8	57,190	9.5	52,110	8.7
	DID 6M44	(1)	UAH 3-648	77,660	12.0	73,260	11.3	71,510	11.0	69,750	10.8	63,720	9.8
	DID 6M44	(1)	UAH 3-736	79,420	10.8	74,920	10.2	73,090	9.9	71,250	9.7	64,970	8.8
	DID 6M44	(2)	UAH 2-365	79,310	10.8	74,820	10.2	73,000	10.0	71,160	9.7	64,890	8.9
	DID 7M44	(1)	UAH 3-736	88,200	12.0	83,200	11.3	81,190	11.0	79,170	10.8	72,260	9.8
	DID 7M44	(1)	UAH 4-866	90,600	10.5	85,470	9.9	83,350	9.6	81,230	9.4	73,970	8.5
	DID 7M44	(2)	UAH 2-433	90,600	10.5	85,470	9.9	83,350	9.6	81,230	9.4	73,970	8.5
	DID 8M44	(1)	UAH 4-980	107,010	10.9	100,950	10.3	98,460	10.0	95,960	9.8	87,420	8.9
	DID 8M44	(2)	UAH 2-490	107,010	10.9	100,950	10.3	98,460	10.0	95,960	9.8	87,420	8.9
	DID 10M44	(1)	UAH 4-1100	125,660	11.4	118,540	10.8	115,630	10.5	112,700	10.2	102,720	9.3
	DID 10M44	(2)	UAH 3-530	124,880	11.8	117,810	11.1	114,940	10.8	112,050	10.6	102,180	9.6
	DID 10M44	(2)	UAH 3-648	128,830	10.0	121,530	9.4	118,480	9.1	115,410	8.9	104,960	8.1
DID 12M44	(1)	UAH 4-1452	152,050	10.5	143,440	9.9	139,870	9.6	136,270	9.4	124,030	8.5	
DID 12M44	(2)	UAH 3-648	149,370	11.6	140,910	10.9	137,460	10.6	133,990	10.3	122,140	9.4	
DID 12M44	(2)	UAH 3-736	152,360	10.4	143,730	9.8	140,150	9.5	136,540	9.3	124,250	8.4	



**+35°F Room Temperature**

Comp	MODEL NUMBER			AMBIENT TEMPERATURE									
				80°		90°		95°		100°		110°	
	Cond. Unit	#	Evaporator	BTU/hr	TD	BTU/hr	TD	BTU/hr	TD	BTU/hr	TD	BTU/hr	TD
DISCUS	VID 15H22	(1)	UAH 4-1452	165,580	11.4	156,200	10.8	152,440	10.5	148,660	10.2	137,020	9.4
	VID 15H22	(2)	UAH 3-736	165,980	11.2	156,580	10.6	152,810	10.4	149,000	10.1	137,320	9.3
	VID 20H22	(1)	UAH 4-1821	184,240	10.1	173,810	9.5	169,540	9.3	165,220	9.1	152,030	8.3
	VID 20H22	(2)	UAH 3-736	177,520	12.1	167,470	11.4	163,500	11.1	159,480	10.8	147,160	10.0
	VID 20H22	(2)	UAH 4-866	182,740	10.5	172,390	9.9	168,190	9.7	163,940	9.5	150,950	8.7
	VID 20H22	(3)	UAH 3-530	180,070	11.3	169,870	10.7	165,780	10.4	161,660	10.2	149,010	9.4
	VID 25H22	(1)	UAH 5-2275	234,490	10.3	221,210	9.7	215,830	9.5	210,390	9.2	193,750	8.5
	VID 25H22	(2)	UAH 4-980	228,310	11.7	215,380	11.0	210,270	10.7	205,110	10.5	189,260	9.7
	VID 25H22	(2)	UAH 4-1100	233,150	10.6	219,950	10.0	214,620	9.8	209,250	9.5	192,780	8.8
	VID 25H22	(3)	UAH 3-648	227,950	11.8	215,040	11.1	209,950	10.8	204,810	10.5	189,000	9.7
	VID 25H22	(3)	UAH 3-736	233,300	10.6	220,090	10.0	214,760	9.7	209,380	9.5	192,880	8.7
	VID 30H22	(1)	UAH 5-2275	263,650	11.6	248,720	10.9	242,720	10.7	236,670	10.4	218,090	9.6
	VID 30H22	(1)	UAH 6-2730	271,620	10.0	256,240	9.4	249,870	9.1	243,460	8.9	223,840	8.2
	VID 30H22	(2)	UAH 4-1100	262,080	11.9	247,240	11.2	241,310	11.0	235,320	10.7	216,950	9.9
	VID 30H22	(3)	UAH 3-736	262,250	11.9	247,400	11.2	241,460	10.9	235,470	10.7	217,070	9.8
	VID 30H22	(2)	UAH 4-866	269,550	10.4	254,290	9.8	248,020	9.5	241,700	9.3	222,350	8.6
DISCUS	VID 15M44	(1)	UAH 4-1452	167,000	11.4	157,540	10.8	153,670	10.6	149,770	10.3	137,830	9.5
	VID 15M44	(2)	UAH 3-736	167,360	11.3	157,880	10.7	154,000	10.5	150,080	10.2	138,090	9.4
	VID 15M44	(2)	UAH 4-866	171,460	9.9	161,750	9.3	157,680	9.1	153,580	8.9	141,040	8.1
	VID 15M44	(3)	UAH 2-490	167,330	11.3	157,850	10.7	153,970	10.5	150,050	10.2	138,070	9.4
	VID 15M44	(3)	UAH 3-530	169,360	10.6	159,770	10.0	155,800	9.8	151,790	9.5	139,540	8.8
	VID 20M44	(1)	UAH 4-1821	186,650	10.3	176,080	9.7	171,660	9.4	167,210	9.2	153,610	8.4
	VID 20M44	(2)	UAH 3-736	180,580	12.3	170,350	11.6	166,210	11.3	162,030	11.0	149,230	10.1
	VID 20M44	(2)	UAH 4-866	185,300	10.7	174,810	10.1	170,450	9.8	166,060	9.6	152,640	8.8
	VID 20M44	(3)	UAH 3-530	182,890	11.4	172,530	10.8	168,280	10.6	164,000	10.3	150,900	9.5
	VID 25M44	(1)	UAH 5-2275	237,420	10.4	223,980	9.8	218,410	9.6	212,800	9.3	195,640	8.6
	VID 25M44	(2)	UAH 4-980	231,830	11.9	218,700	11.2	213,390	10.9	208,030	10.6	191,600	9.8
	VID 25M44	(2)	UAH 4-1100	236,220	10.7	222,840	10.1	217,320	9.9	211,770	9.6	194,770	8.8
	VID 25M44	(3)	UAH 3-648	231,500	11.9	218,390	11.2	213,100	11.0	207,750	10.7	191,360	9.8
	VID 25M44	(3)	UAH 3-736	236,340	10.7	222,960	10.1	217,440	9.8	211,880	9.6	194,860	8.8
	VID 30M44	(1)	UAH 5-2275	267,360	11.8	252,220	11.1	246,070	10.8	239,870	10.5	220,870	9.7
	VID 30M44	(1)	UAH 6-2730	275,030	10.1	259,460	9.5	252,960	9.3	246,410	9.0	226,410	8.3
VID 30M44	(2)	UAH 4-1100	265,830	12.1	250,780	11.4	244,710	11.1	238,570	10.8	219,770	10.0	
VID 30M44	(2)	UAH 4-1452	277,420	9.5	261,710	9.0	255,100	8.8	248,440	8.6	228,120	7.9	
VID 30M44	(3)	UAH 4-866	273,040	10.5	257,580	9.9	251,170	9.7	244,710	9.4	224,980	8.7	

**+28°F Room Temperature**

Comp	MODEL NUMBER			AMBIENT TEMPERATURE									
				80°		90°		95°		100°		110°	
	Cond. Unit	#	Evaporator	BTU/hr	TD	BTU/hr	TD	BTU/hr	TD	BTU/hr	TD	BTU/hr	TD
H E R M E T I C	RIH075 H22	(1)	AE 16-46B	6,440	11.2	6,070	10.6	5,940	10.3	5,750	10.0	5,380	9.4
	RIH100 H22	(1)	AE 26-75B	9,540	11.0	9,000	10.4	8,800	10.2	8,520	9.9	7,960	9.2
	RIH151 H22	(1)	AE 26-92B	12,740	11.1	12,010	10.5	11,830	10.4	11,550	10.1	10,840	9.5
	RIH151 H22	(2)	AE 16-46B	12,760	11.1	12,030	10.5	11,850	10.3	11,570	10.1	10,860	9.5
	RIH201 H22	(1)	AE 36-120B	16,590	11.6	15,650	10.9	15,420	10.7	15,060	10.5	14,120	9.8
	RIH201 H22	(1)	AE 36-140B	17,210	10.2	16,230	9.6	15,980	9.5	15,600	9.3	14,590	8.7
	RIH201 H22	(2)	AE 26-75B	17,300	10.0	16,320	9.4	16,070	9.3	15,680	9.1	14,660	8.5
	RIH251 H22	(1)	AE 46-164B	22,730	11.9	21,440	11.2	20,960	11.0	20,480	10.7	18,420	9.7
	RIH251 H22	(1)	AE 46-185B	23,640	10.4	22,300	9.8	21,780	9.6	21,270	9.3	19,050	8.4
	RIH251 H22	(2)	AE 26-92B	23,640	10.4	22,300	9.8	21,780	9.6	21,270	9.3	19,050	8.4
	RIH301 H22	(1)	AE 46-185B	26,720	11.8	25,200	11.1	24,830	10.9	24,250	10.7	23,050	10.1
	RIH301 H22	(1)	AE 56-210B	27,130	11.1	25,590	10.5	25,200	10.4	24,610	10.1	23,370	9.6
	RIH301 H22	(2)	AE 36-120B	28,090	9.8	26,500	9.2	26,090	9.1	25,450	8.9	24,130	8.4
	RIH401 H22	(1)	AE 66-280B	37,500	11.0	35,370	10.4	34,840	10.2	34,030	10.0	33,420	9.8
	RIH401 H22	(2)	AE 36-140B	37,380	11.1	35,260	10.5	34,730	10.3	33,930	10.1	33,320	9.9
	RIH500 H22	(2)	AE 46-164B	42,360	11.1	39,960	10.5	39,170	10.3	38,220	10.0	36,920	9.7
	RIH500 H22	(2)	AE 46-185B	43,740	9.6	41,260	9.1	40,420	8.9	39,410	8.7	38,030	8.4
	RIH050 M44	(1)	AE 16-41B	5,800	10.1	5,470	9.5	5,320	9.3	5,150	9.0	4,820	8.4
	RIH075 M44	(1)	AE 26-75B	8,710	10.1	8,210	9.5	7,990	9.2	7,720	8.9	7,210	8.3
	RIH101 M44	(1)	AE 26-92B	11,680	10.3	11,010	9.7	10,720	9.4	10,370	9.1	9,700	8.5
RIH150 M44	(1)	AE 36-120B	15,090	10.5	14,230	9.9	13,850	9.6	13,390	9.3	12,540	8.7	
RIH201 M44	(1)	AE 46-185B	23,760	10.4	22,410	9.8	21,820	9.6	21,100	9.3	19,760	8.7	
RIH201 M44	(2)	AE 26-92B	23,760	10.4	22,410	9.8	21,820	9.6	21,100	9.3	19,760	8.7	
RIH300 M44	(1)	AE 46-185B	25,840	11.3	24,370	10.7	23,750	10.4	22,980	10.1	21,550	9.5	
RIH300 M44	(1)	AE 56-210B	26,180	10.7	24,690	10.1	24,060	9.9	23,270	9.6	21,810	9.0	
RIH400 M44	(1)	AE 66-245B	32,420	11.1	30,580	10.5	29,790	10.2	28,820	9.9	27,020	9.2	
RIH400 M44	(2)	AE 36-120B	32,310	11.2	30,480	10.6	29,690	10.3	28,730	10.0	26,940	9.4	
RIH500 M44	(2)	AE 46-185B	48,040	10.6	45,320	10.0	44,220	9.7	42,920	9.4	40,090	8.8	
RIH500 M44	(2)	AE 59-210B	48,570	10.0	45,820	9.4	44,700	9.2	43,370	8.9	40,480	8.3	
S E M I	RIS050 M44	(1)	AE 16-41B	4,830	10.1	4,550	9.5	4,430	9.3	4,320	9.1	4,050	8.5
	RIS100 M44	(1)	AE 26-75B	8,670	10.0	8,170	9.4	7,960	9.2	7,760	9.0	7,290	8.4
	RIS200 M44	(1)	AE 36-120B	14,890	10.4	14,040	9.8	13,680	9.5	13,330	9.3	12,490	8.7
	RIS200 M44	(2)	AE 26-60B	14,800	10.6	13,960	10.0	13,960	9.8	13,260	9.5	12,430	8.9
	RIS300 M44	(1)	AE 56-210B	26,770	11.0	25,250	10.4	24,610	10.1	23,980	9.9	22,500	9.2
	RIS300 M44	(2)	AE 26-92B	26,440	11.7	24,940	11.0	24,320	10.7	23,710	10.4	22,260	9.8
	RIS400 M44	(1)	AE 66-245B	31,740	10.8	29,940	10.2	29,180	10.0	28,430	9.7	26,660	9.1
RIS400 M44	(2)	AE 36-120B	31,650	11.0	29,850	10.4	29,090	10.1	28,350	9.9	26,590	9.2	

**+28°F Room Temperature**

Comp	MODEL NUMBER			AMBIENT TEMPERATURE									
				80°		90°		95°		100°		110°	
	Cond. Unit	#	Evaporator	BTU/hr	TD	BTU/hr	TD	BTU/hr	TD	BTU/hr	TD	BTU/hr	TD
S C R O L	RIO 200	M44 (1)	AE 36-140B	19,560	11.7	18,450	11.0	17,990	10.7	17,390	10.3	16,450	9.8
	RIO 200	M44 (1)	AE 46-164B	19,920	10.5	18,790	9.9	18,320	9.6	17,690	9.3	16,720	8.8
	RIO 200	M44 (2)	AE 26-75B	19,650	11.3	18,530	10.7	18,060	10.4	17,450	10.1	16,500	9.5
	RIO 250	M44 (1)	AE 46-185B	24,370	10.7	22,990	10.1	22,410	9.8	21,640	9.5	20,470	9.0
	RIO 250	M44 (2)	AE 26-92B	24,370	10.7	22,990	10.1	22,410	9.8	21,640	9.5	20,470	9.0
	RIO 300	M44 (1)	AE 56-210B	27,830	11.4	26,250	10.8	25,600	10.5	24,730	10.2	23,400	9.6
	RIO 300	M44 (2)	AE 66-245B	28,580	9.8	26,960	9.2	26,270	9.0	25,350	8.7	23,960	8.2
	RIO 300	M44 (2)	AE 36-120B	28,520	10.0	26,900	9.4	26,210	9.1	25,300	8.8	23,910	8.3
	RIO 301	M44 (1)	AE 66-245B	33,490	11.4	31,590	10.8	30,800	10.5	29,750	10.2	28,140	9.6
	RIO 301	M44 (1)	AE 66-280B	34,240	10.1	32,300	9.5	31,470	9.2	30,370	8.9	28,700	8.4
	RIO 301	M44 (2)	AE 36-140B	34,180	10.2	32,240	9.6	31,420	9.3	30,320	9.0	28,650	8.5
	RIO 400	M44 (1)	AE 66-280B	39,070	11.4	36,850	10.8	35,930	10.5	34,700	10.2	32,810	9.6
	RIO 400	M44 (2)	AE 36-140B	38,980	11.6	36,770	10.9	35,850	10.6	34,630	10.3	32,750	9.7
	RIO 400	M44 (2)	AE 46-164B	39,680	10.4	37,430	9.8	36,480	9.6	35,210	9.2	33,280	8.7
RIO 600	M44 (2)	AE 46-164B	45,380	11.9	42,810	11.2	41,760	10.8	40,510	10.6	37,800	9.9	
RIO 600	M44 (2)	AE 46-185B	46,570	10.3	43,930	9.7	42,820	9.4	41,520	9.1	38,670	8.5	
S C R O L	DIO 7	M44 (1)	ITE 36-520	68,800	11.3	64,900	10.7	63,460	10.5	62,010	10.2	57,000	9.4
	DIO 7	M44 (2)	ITE 26-270	68,600	11.4	64,710	10.8	63,280	10.6	61,830	10.3	56,850	9.5
	DIO 7	M44 (3)	ITE 36-185	70,660	10.4	66,660	9.8	65,150	9.6	63,620	9.4	58,360	8.6
	DIO 8	M44 (2)	ITE 26-320	81,130	11.1	76,530	10.5	74,830	10.3	73,100	10.0	67,160	9.2
	DIO 8	M44 (3)	ITE 36-185	79,740	11.8	75,220	11.1	73,570	10.8	71,910	10.6	66,140	9.8
	DIO 8	M44 (4)	ITE 26-150	81,060	11.1	76,470	10.5	74,770	10.3	73,050	10.1	67,110	9.3
	DIO 10	M44 (2)	ITE 36-385	104,700	11.2	98,770	10.6	96,470	10.4	94,140	10.1	86,160	9.3
	DIO 10	M44 (2)	ITE 36-460	107,580	10.1	101,490	9.5	99,060	9.3	96,600	9.0	88,220	8.2
	DIO 10	M44 (3)	ITE 26-270	103,930	11.6	98,040	10.9	95,770	10.7	93,480	10.4	85,600	9.5
	DIO 10	M44 (4)	ITE 36-185	104,100	11.6	98,200	10.9	95,930	10.6	93,620	10.4	85,730	9.5
	DIO 13	M44 (2)	ITE 36-460	124,710	11.7	117,650	11.0	114,950	10.7	112,220	10.5	102,830	9.6
	DIO 13	M44 (2)	ITE 36-520	127,930	10.6	120,680	10.0	117,840	9.7	114,970	9.5	105,130	8.7
	DIO 13	M44 (4)	ITE 26-270	127,630	10.7	120,400	10.1	117,570	9.8	114,710	9.6	104,920	8.8
	DIO 7	M44 (1)	UEM 3-583	67,950	11.8	64,100	11.1	62,700	10.9	61,280	10.6	56,380	9.8
	DIO 7	M44 (1)	UEM 3-662	70,090	10.7	66,120	10.1	64,630	9.9	63,120	9.6	57,940	8.9
	DIO 7	M44 (2)	UEM 2-329	69,990	10.7	66,020	10.1	64,540	9.9	63,040	9.7	57,870	8.9
	DIO 8	M44 (1)	UEM 3-662	79,010	12.1	74,530	11.4	72,910	11.1	71,270	10.9	65,610	10.0
	DIO 8	M44 (1)	UEM 4-780	82,250	10.7	77,590	10.1	75,840	9.8	74,070	9.6	67,970	8.8
	DIO 8	M44 (2)	UEM 2-390	82,250	10.7	77,590	10.1	75,840	9.8	74,070	9.6	67,970	8.8
	DIO 10	M44 (1)	UEM 4-882	103,290	11.9	97,440	11.2	95,200	10.9	92,930	10.7	85,150	9.8
DIO 10	M44 (1)	UEM 4-1100	107,880	10.0	101,770	9.4	99,330	9.1	96,860	8.9	88,440	8.1	
DIO 10	M44 (2)	UEM 2-441	103,290	11.9	97,440	11.2	95,200	10.9	92,930	10.7	85,150	9.8	
DIO 13	M44 (1)	UEM 4-1100	125,140	11.6	118,050	10.9	115,330	10.6	112,580	10.4	103,130	9.5	
DIO 13	M44 (1)	UEM 4-1320	129,760	10.0	122,410	9.4	119,480	9.2	116,530	8.9	106,440	8.2	
DIO 13	M44 (2)	UEM 3-583	126,670	11.0	119,500	10.4	116,710	10.1	113,890	9.9	104,240	9.0	

**+28°F Room Temperature**

Comp	MODEL NUMBER			AMBIENT TEMPERATURE									
				80°		90°		95°		100°		110°	
	Cond. Unit	#	Evaporator	BTU/hr	TD	BTU/hr	TD	BTU/hr	TD	BTU/hr	TD	BTU/hr	TD
DISCUS	DID 5H22	(1)	ITE 36-385	53,820	11.6	50,770	10.9	49,560	10.7	48,340	10.4	44,160	9.5
	DID 5H22	(1)	ITE 36-460	55,170	10.3	52,040	9.7	50,760	9.5	49,480	9.2	45,110	8.4
	DID 7H22	(2)	ITE 26-320	77,860	10.7	73,450	10.1	71,660	9.9	69,850	9.6	63,680	8.8
	DID 8H22	(2)	ITE 26-320	90,170	12.4	85,060	11.7	83,040	11.4	81,010	11.1	74,030	10.2
	DID 8H22	(2)	ITE 36-385	94,050	10.1	88,720	9.5	86,520	9.3	84,310	9.1	76,780	8.3
	DID 10H22	(2)	ITE 36-385	108,500	11.7	102,350	11.0	99,870	10.7	97,380	10.5	88,870	9.6
	DID 10H22	(2)	ITE 36-460	111,050	10.4	104,760	9.8	102,170	9.5	99,560	9.3	90,680	8.5
	DID 12H22	(2)	ITE 36-460	129,210	12.1	121,890	11.4	118,980	11.1	116,050	10.8	106,030	9.9
	DID 12H22	(2)	ITE 36-520	132,060	10.9	124,580	10.3	121,550	10.0	118,490	9.8	108,060	8.9
DISCUS	DID 5M44	(1)	ITE 36-385	54,410	11.7	51,330	11.0	50,110	10.8	48,880	10.5	44,660	9.6
	DID 5M44	(1)	ITE 36-460	55,790	10.4	52,630	9.8	51,340	9.6	50,050	9.4	45,640	8.5
	DID 6M44	(1)	ITE 36-520	68,250	11.2	64,380	10.6	62,840	10.4	61,290	10.1	55,980	9.2
	DID 6M44	(2)	ITE 26-270	68,100	11.3	64,240	10.7	62,710	10.5	61,160	10.2	55,870	9.3
	DID 7M44	(2)	ITE 26-320	78,750	10.8	74,290	10.2	72,480	10.0	70,660	9.7	64,430	8.9
	DID 8M44	(2)	ITE 36-385	95,060	10.2	89,670	9.6	87,460	9.4	85,230	9.2	77,630	8.3
	DID 10M44	(2)	ITE 36-385	109,670	11.8	103,460	11.1	100,970	10.9	98,450	10.6	89,860	9.7
	DID 10M44	(2)	ITE 36-460	112,280	10.5	105,920	9.9	103,310	9.7	100,670	9.4	91,710	8.6
	DID 12M44	(2)	ITE 36-460	129,890	12.1	122,530	11.4	119,590	11.2	116,630	10.9	106,500	9.9
	DID 12M44	(2)	ITE 36-520	132,670	10.9	125,160	10.3	122,100	10.1	119,010	9.8	108,480	9.0
DISCUS	DID 5H22	(2)	UEM 2-270	55,140	10.3	52,010	9.7	50,740	9.5	49,460	9.3	45,090	8.4
	DID 7H22	(1)	UEM 3-662	76,450	11.7	72,120	11.0	70,390	10.8	68,650	10.5	62,680	9.6
	DID 7H22	(2)	UEM 2-329	76,370	11.8	72,040	11.1	70,320	10.8	68,580	10.8	62,620	9.6
	DID 7H22	(2)	UEM 2-390	78,600	10.2	74,150	9.6	72,320	9.4	70,480	9.1	64,200	8.3
	DID 8H22	(1)	UEM 4-780	91,140	11.9	85,980	11.2	83,920	10.9	81,840	10.6	74,720	9.7
	DID 8H22	(1)	UEM 4-882	93,090	10.7	87,820	10.1	85,670	9.8	83,500	9.6	76,100	8.7
	DID 8H22	(2)	UEM 2-441	93,090	10.7	87,820	10.1	85,670	9.8	83,500	9.6	76,100	8.7
	DID 10H22	(1)	UEM 4-1100	111,320	10.3	105,010	9.7	102,410	9.4	99,790	9.2	90,870	8.4
	DID 10H22	(2)	UEM 3-583	112,290	9.8	105,930	9.2	103,290	9.0	100,620	8.7	91,560	7.9
	DID 12H22	(1)	UEM 4-1320	133,680	10.3	126,110	9.7	123,010	9.4	119,870	9.2	109,210	8.4
	DID 12H22	(2)	UEM 3-583	130,950	11.3	123,530	10.7	120,550	10.5	117,540	10.2	107,270	9.3
	DID 12H22	(2)	UEM 3-662	133,750	10.2	126,170	9.6	123,060	9.4	119,930	9.2	109,250	8.5
DISCUS	DID 5M44	(2)	UEM 2-270	55,760	10.5	52,600	9.9	51,320	9.6	50,030	9.4	45,620	8.5
	DID 6M44	(1)	UEM 3-583	66,560	11.8	62,790	11.1	62,280	10.8	60,750	10.5	55,530	9.6
	DID 6M44	(1)	UEM 3-662	69,200	10.6	65,280	10.0	63,690	9.7	62,100	9.5	56,650	8.7
	DID 6M44	(2)	UEM 2-329	69,130	10.6	65,210	10.0	63,630	9.8	62,040	9.5	56,600	8.7
	DID 7M44	(1)	UEM 3-662	77,310	11.8	72,930	11.1	71,180	10.9	69,420	10.6	63,400	9.7
	DID 7M44	(1)	UEM 4-780	79,500	10.3	75,000	9.7	73,160	9.5	71,300	9.2	64,960	8.4
	DID 7M44	(2)	UEM 2-390	79,500	10.3	75,000	9.7	73,160	9.5	71,300	9.2	64,960	8.4
	DID 8M44	(1)	UEM 4-882	94,080	10.8	88,750	10.2	86,580	9.9	84,390	9.7	76,930	8.8
	DID 8M44	(2)	UEM 2-441	94,080	10.8	88,750	10.2	86,580	9.9	84,390	9.7	76,930	8.8
	DID 10M44	(1)	UEM 4-1100	112,560	10.4	106,180	9.8	103,550	9.5	100,910	9.3	91,900	8.5
	DID 10M44	(2)	UEM 3-583	113,550	9.86	107,120	9.3	104,450	9.1	101,760	8.8	92,610	8
	DID 12M44	(1)	UEM 4-1320	134,260	10.3	126,660	9.7	123,520	9.5	120,360	9.2	109,600	8.4
	DID 12M44	(2)	UEM 3-583	131,590	11.4	124,140	10.8	121,120	10.5	118,080	10.2	107,710	9.3

**+28°F Room Temperature**

Comp	MODEL NUMBER		AMBIENT TEMPERATURE									
			80°		90°		95°		100°		110°	
	Cond. Unit	# Evaporator	BTU/hr	TD	BTU/hr	TD	BTU/hr	TD	BTU/hr	TD	BTU/hr	TD
DISCUS	VID 15H22 (1)	UEM 4-1320	143,620	11.0	135,490	10.4	132,240	10.1	128,960	9.9	118,900	9.1
	VID 15H22 (2)	UEM 3-583	140,250	12.2	132,310	11.5	129,220	11.2	126,090	10.9	116,450	10.1
	VID 15H22 (2)	UEM 3-662	143,700	11.0	135,560	10.4	132,310	10.1	129,030	9.9	118,960	9.1
	VID 15H22 (3)	UEM 2-441	143,690	11.0	135,550	10.4	132,300	10.1	129,020	9.9	118,950	9.1
	VID 20H22 (1)	UEM 4-1320	152,530	11.7	143,890	11.0	140,540	10.8	137,150	10.5	126,700	9.7
	VID 20H22 (1)	UEM 4-1656	159,120	9.8	150,110	9.2	146,460	8.9	142,780	8.7	131,500	8.0
	VID 20H22 (2)	UEM 3-662	152,620	11.7	143,980	11.0	140,620	10.7	137,230	10.5	126,770	9.7
	VID 20H22 (2)	UEM 4-780	157,480	10.2	148,560	9.6	144,980	9.4	141,380	9.2	130,300	8.4
	VID 20H22 (3)	UEM 2-441	152,610	11.7	143,970	11.0	140,610	10.7	137,210	10.5	126,760	9.7
	VID 25H22 (1)	UEM 4-1656	193,750	11.9	182,780	11.2	178,520	10.9	174,220	10.6	160,980	9.8
	VID 25H22 (1)	UEM 5-2065	201,970	9.9	190,530	9.3	185,910	9.1	181,250	8.9	166,960	8.2
	VID 25H22 (2)	UEM 4-882	196,220	11.2	185,110	10.6	180,750	10.4	176,340	10.1	162,780	9.3
	VID 25H22 (3)	UEM 3-583	195,890	11.3	184,800	10.7	180,450	10.4	176,060	10.2	162,550	9.4
	VID 25H22 (3)	UEM 3-662	200,600	10.2	189,240	9.6	184,680	9.4	180,080	9.2	165,970	8.5
	VID 30H22 (1)	UEM 5-2065	229,580	11.2	216,580	10.6	211,480	10.4	206,310	10.1	190,450	9.3
	VID 30H22 (2)	UEM 4-1100	232,360	10.7	219,200	10.1	213,970	9.8	208,690	9.6	192,470	8.9
VID 30H22 (3)	UEM 3-662	227,820	11.6	214,920	10.9	209,890	10.7	204,800	10.4	189,160	9.6	
VID 30H22 (3)	UEM 4-780	234,960	10.2	221,660	9.6	216,310	9.4	210,910	9.1	194,360	8.4	
DISCUS	VID 15M44 (1)	UEM 4-1320	147,620	11.3	139,260	10.7	135,870	10.4	132,440	10.1	121,940	9.3
	VID 15M44 (2)	UEM 3-662	147,690	11.2	139,330	10.6	135,930	10.4	132,510	10.1	122,000	9.3
	VID 15M44 (2)	UEM 4-780	151,510	9.9	142,930	9.3	139,360	9.0	135,750	8.8	124,750	8.1
	VID 15M44 (3)	UEM 2-441	147,590	11.3	139,230	10.7	135,920	10.4	132,490	10.1	122,000	9.3
	VID 20M44 (1)	UEM 4-1320	159,380	12.2	150,350	11.5	146,710	11.2	143,030	11.0	131,750	10.1
	VID 20M44 (1)	UEM 4-1656	165,130	10.1	155,780	9.5	151,870	9.3	147,930	9.0	135,900	8.3
	VID 20M44 (2)	UEM 3-662	159,460	12.2	150,430	11.5	146,780	10.2	143,100	10.9	131,810	10.1
	VID 20M44 (2)	UEM 4-780	163,700	10.6	154,430	10.0	150,590	9.8	146,710	9.5	134,870	8.7
	VID 25M44 (1)	UEM 5-2065	209,280	10.3	197,430	9.7	192,560	9.4	187,660	9.2	172,650	8.5
	VID 25M44 (2)	UEM 4-882	203,780	11.7	192,240	11.0	187,630	10.8	182,970	10.5	168,670	9.7
	VID 25M44 (2)	UEM 4-1100	211,330	9.8	199,360	9.2	194,400	8.9	189,410	8.7	174,130	8.0
	VID 25M44 (3)	UEM 3-583	203,470	11.8	191,950	11.1	187,350	10.8	182,700	10.6	168,450	9.7
	VID 25M44 (3)	UEM 3-662	179,350	10.6	169,190	10.0	165,390	9.7	161,540	9.5	151,710	8.7
	VID 30M44 (1)	UEM 5-2065	235,780	11.6	222,430	10.9	217,050	10.6	211,620	10.4	194,970	9.6
	VID 30M44 (1)	UEM 6-2480	242,840	9.9	229,090	9.3	223,390	9.1	217,640	8.9	200,070	8.2
	VID 30M44 (2)	UEM 4-1100	238,320	10.9	224,830	10.3	219,330	10.1	213,790	9.8	196,810	9.0
VID 30M44 (3)	UEM 4-780	240,700	10.4	227,070	9.8	221,460	9.6	215,810	9.3	198,520	8.6	

## +20°F Room Temperature

Comp	MODEL NUMBER			AMBIENT TEMPERATURE									
				80°		90°		95°		100°		110°	
	Cond. Unit	#	Evaporator	BTU/hr	TD	BTU/hr	TD	BTU/hr	TD	BTU/hr	TD	BTU/hr	TD
H E R M E T I C	RIH 075 H22	(1)	AE 16-41B	5,140	11.0	4,840	10.4	4,730	10.2	4,590	9.9	4,300	9.3
	RIH 100 H22	(1)	AE 26-60B	7,580	11.2	7,150	10.6	6,990	10.4	6,780	10.1	6,350	9.4
	RIH 151 H22	(1)	AE 26-75B	9,630	11.4	9,080	10.8	8,960	10.7	8,760	10.4	8,260	9.8
	RIH 151 H22	(1)	AE 26-92B	10,180	9.8	9,600	9.2	9,460	9.1	9,250	8.9	8,700	8.4
	RIH 201 H22	(1)	AE 26-92B	12,710	11.7	11,990	11.0	11,810	10.9	11,550	10.6	10,840	10.0
	RIH 201 H22	(2)	AE 26-60B	13,460	9.8	12,690	9.2	12,490	9.0	12,200	8.8	11,410	8.2
	RIH 251 H22	(1)	AE 36-140B	18,480	11.4	17,430	10.8	17,050	10.5	16,670	10.3	15,130	9.3
	RIH 251 H22	(1)	AE 46-164B	19,120	10.3	18,030	9.7	17,620	9.5	17,220	9.3	15,570	8.4
	RIH 251 H22	(2)	AE 26-75B	18,660	11.1	17,600	10.5	17,210	10.2	16,820	10.0	15,250	9.1
	RIH 301 H22	(1)	AE 46-164B	21,580	11.7	20,350	11.0	20,040	10.8	19,500	10.6	18,370	9.9
	RIH 301 H22	(1)	AE 46-185B	22,390	10.3	21,120	9.7	20,800	9.6	20,310	9.3	19,050	8.8
	RIH 301 H22	(2)	AE 26-92B	22,390	10.3	21,120	9.7	20,800	9.6	20,310	9.3	19,050	8.8
	RIH 401 H22	(1)	AE 66-245B	30,420	10.8	28,690	10.2	28,270	10.0	27,620	9.8	27,020	9.6
	RIH 401 H22	(2)	AE 36-120B	30,290	10.9	28,570	10.3	28,140	10.2	27,510	9.9	26,900	9.7
	RIH 500 H22	(1)	AE 66-245B	33,900	12.0	31,980	11.3	31,380	11.1	30,650	10.9	29,660	10.5
	RIH 500 H22	(1)	AE 66-280B	35,050	10.7	33,060	10.1	32,420	9.9	31,640	9.7	30,590	9.3
	RIH 500 H22	(2)	AE 36-140B	35,050	10.7	33,060	10.1	32,420	9.9	31,640	9.7	30,590	9.3
	RIH 050 M44	(1)	AE 16-36B	4,730	10.2	4,460	9.6	4,350	9.4	4,210	9.1	3,940	8.5
	RIH 075 M44	(1)	AE 26-60B	7,240	10.7	6,830	10.1	6,650	9.9	6,430	9.5	6,020	8.9
	RIH 101 M44	(1)	AE 26-75B	9,690	11.6	9,140	10.9	8,910	10.6	8,630	10.3	8,100	9.6
RIH 150 M44	(1)	AE 26-92B	12,380	11.3	11,670	10.7	11,370	10.5	11,000	10.1	10,320	9.5	
RIH 201 M44	(1)	AE 36-140B	19,110	11.8	18,020	11.1	17,560	10.8	17,000	10.5	15,960	9.8	
RIH 201 M44	(1)	AE 46-164B	19,630	10.6	18,510	10.0	18,030	9.7	17,440	9.4	16,340	8.8	
RIH 201 M44	(2)	AE 26-75B	19,250	11.4	18,160	10.8	17,690	10.5	17,120	10.2	16,060	9.6	
RIH 300 M44	(1)	AE 46-164B	21,240	11.4	20,030	10.8	19,520	10.5	18,900	10.2	17,730	9.6	
RIH 300 M44	(2)	AE 26-92B	21,930	10.1	20,680	9.5	20,140	9.3	19,480	9.0	18,240	8.4	
RIH 400 M44	(1)	AE 56-210B	26,740	11.3	25,220	10.7	24,580	10.4	23,790	10.1	22,320	9.5	
RIH 400 M44	(1)	AE 66-245B	27,680	9.9	26,110	9.3	25,420	9.0	24,580	8.7	23,020	8.2	
RIH 400 M44	(2)	AE 36-120B	27,590	10.0	26,020	9.4	25,340	9.2	24,500	8.8	22,950	8.3	
RIH 500 M44	(1)	AE 66-280B	39,240	12.0	37,010	11.3	36,140	11.0	35,110	10.7	32,860	10.0	
RIH 500 M44	(2)	AE 46-164B	40,160	10.8	37,880	10.2	36,970	10.0	35,900	9.7	33,550	9.1	
S E M I - H E R M E T I C	RIS 075 H22	(1)	AE 16-41B	5,150	11.0	4,850	10.4	4,740	10.2	4,590	9.9	4,300	9.3
	RIS 100 H22	(1)	AE 26-60B	7,560	11.2	7,130	10.6	6,960	10.3	6,740	10.0	6,290	9.3
	RIS 150 H22	(1)	AE 26-75B	9,740	11.6	9,180	10.9	8,970	10.7	8,690	10.3	8,140	9.7
	RIS 200 H22	(1)	AE 36-120B	13,870	10.0	13,080	9.4	12,780	9.2	12,370	8.9	11,560	8.3
	RIS 300 H22	(1)	AE 46-164B	20,800	11.2	19,620	10.6	19,160	10.4	18,550	10.0	17,340	9.4
	RIS 300 H22	(2)	AE 26-92B	21,480	9.9	20,260	9.3	19,780	9.1	19,130	8.8	17,850	8.2
	RIS 400 M22	(1)	AE 56-210B	26,580	11.2	25,070	10.6	24,480	10.4	23,700	10.0	22,140	9.4
	RIS 400 M22	(2)	AE 36-120B	27,410	9.9	25,850	9.3	25,230	9.1	24,400	8.8	22,750	8.2
	RIS 400 H22	(1)	AE 66-245B	29,760	10.6	28,070	10.0	27,420	9.7	26,530	9.4	24,780	8.8
	RIS 400 H22	(2)	AE 36-120B	29,650	10.7	27,970	10.1	27,320	9.9	26,440	9.5	24,700	8.9
	RIS 500 M22	(2)	AE 46-164B	42,650	11.6	40,230	10.9	39,280	10.6	38,260	10.3	35,720	9.6
	RIS 500 M22	(2)	AE 46-185B	43,940	10.1	41,450	9.5	40,440	9.3	39,360	9.0	36,670	8.4
	RIS 500 H22	(1)	AE 66-280B	35,510	10.8	33,500	10.2	32,710	10.0	31,870	9.7	29,760	9.1
	RIS 500 H22	(2)	AE 36-140B	35,450	10.9	33,440	10.3	32,650	10.1	31,810	9.8	29,710	9.2
	RIS 050 M44	(1)	AE 16-36B	4,020	10.5	3,790	9.9	3,690	9.6	3,590	9.4	3,370	8.8
	RIS 100 M44	(1)	AE 26-60B	7,320	10.8	6,900	10.2	6,740	10.0	6,570	9.7	6,220	9.2
	RIS 200 M44	(1)	AE 26-92B	12,330	11.3	11,630	10.7	11,320	10.4	11,020	10.1	10,330	9.5
RIS 300 M44	(1)	AE 46-185B	22,810	10.5	21,510	9.9	20,940	9.6	20,390	9.4	19,090	8.8	
RIS 300 M44	(2)	AE 26-92B	22,810	10.5	21,510	9.9	20,940	9.6	20,390	9.4	19,090	8.8	
RIS 400 M44	(1)	AE 56-210B	26,530	11.2	25,020	10.6	24,390	10.3	23,730	10.1	22,240	9.4	
RIS 400 M44	(2)	AE 36-120B	27,300	9.9	25,750	9.3	25,060	9.0	24,390	8.8	22,820	8.2	

**+20°F Room Temperature**

Comp	MODEL NUMBER		AMBIENT TEMPERATURE									
			80°		90°		95°		100°		110°	
	Cond. Unit	# Evaporator	BTU/hr	TD	BTU/hr	TD	BTU/hr	TD	BTU/hr	TD	BTU/hr	TD
S C R O L L	RIO 200M44 (1)	AE 36-140B	17,170	11.1	16190	10.5	15790	10.2	15260	9.9	14850	9.6
	RIO 200M44 (1)	AE 46-164B	17,490	10.0	16500	9.4	16090	9.2	15530	8.9	15110	8.6
	RIO 200M44 (2)	AE 26-75B	17,250	10.8	16270	10.2	15870	10.0	15330	9.6	14910	9.4
	RIO 250M44 (1)	AE 46-164B	20,760	11.9	19580	11.2	19110	10.9	18460	10.5	17980	10.3
	RIO 250M44 (1)	AE 46-185B	21,330	10.3	20120	9.7	19620	9.4	18940	9.1	18430	8.9
	RIO 250M44 (2)	AE 26-92B	21,330	10.3	20120	9.7	19620	9.4	18940	9.1	18430	8.9
	RIO 300M44 (1)	AE 46-185B	24,070	11.6	22700	10.9	22150	10.7	21410	10.3	20850	10.0
	RIO 300M44 (1)	AE 56-210B	24,360	10.9	22980	10.3	22410	10.0	21650	9.7	21080	9.4
	RIO 300M44 (2)	AE 26-92B	24,070	11.6	22700	10.9	22150	10.7	21410	10.3	20850	10.0
	RIO 301M44 (1)	AE 66-245B	29,220	10.9	27560	10.3	26880	10.0	25960	9.7	24560	9.2
	RIO 301M44 (2)	AE 36-120B	29,140	11.0	27490	10.4	26810	10.2	25900	9.8	24500	9.3
	RIO 400M44 (1)	AE 66-280B	34,450	11.0	32500	10.4	31690	10.2	30600	9.8	28940	9.3
RIO 400M44 (2)	AE 36-140B	34,400	11.1	32450	10.5	31640	10.3	30550	9.9	28900	9.4	
RIO 600M44 (2)	AE 46-164B	40,040	11.4	37770	10.8	36850	10.5	35750	10.2	33370	9.5	
RIO 600M44 (2)	AE 46-185B	41,090	9.9	38760	9.3	37780	9.1	36630	8.8	34140	8.2	
D I S C U S	DID 5H22 (1)	ITE 36-385	46,220	10.6	43,600	10.0	42,550	9.8	41,500	9.5	37,880	8.7
	DID 5H22 (2)	ITE 36-185	45,910	10.9	43,310	10.3	42,270	10.1	41,230	9.8	37,660	9.0
	DID 7H22 (1)	ITE 36-520	65,470	11.1	61,760	10.5	60,280	10.2	58,780	10.0	53,670	9.1
	DID 7H22 (2)	ITE 26-270	65,390	11.2	61,680	10.6	60,200	10.3	58,710	10.0	53,620	9.2
	DID 8H22 (2)	ITE 26-320	78,640	11.0	74,180	10.4	72,390	10.2	70,590	9.9	64,430	9.0
	DID 10H22 (2)	ITE 26-320	77,760	11.7	73,350	11.0	71,610	10.7	69,840	10.4	63,810	9.5
	DID 10H22 (2)	ITE 36-385	94,320	10.8	88,980	10.2	86,820	10.0	84,650	9.7	77,210	8.9
DID 12H22 (2)	ITE 36-460	111,630	10.7	105,310	10.1	102,740	9.9	100,150	9.6	91,290	8.8	
D I S C U S	DID 5M44 (1)	ITE 36-385	46,710	10.7	44,060	10.1	43,000	9.9	41,940	9.6	38,300	8.8
	DID 5M44 (2)	ITE 36-185	46,390	11.0	43,760	10.4	42,710	10.2	41,670	9.9	38,070	9.1
	DID 6M44 (1)	ITE 36-460	57,570	11.0	54,310	10.4	53,020	10.2	51,720	9.9	47,260	9.1
	DID 6M44 (1)	ITE 36-520	58,860	10.0	55,520	9.4	54,170	9.2	52,820	9.0	48,170	8.2
	DID 6M44 (2)	ITE 26-270	58,780	10.1	55,450	9.5	54,110	9.3	52,760	9.0	48,120	8.2
	DID 7M44 (1)	ITE 36-520	66,250	11.2	62,500	10.6	61,000	10.4	59,490	10.1	54,330	9.2
	DID 7M44 (2)	ITE 26-270	66,170	11.3	62,420	10.7	60,930	10.4	59,420	10.2	54,270	9.3
	DID 8M44 (1)	ITE 36-520	78,540	11.8	74,090	11.1	72,340	10.8	70,560	10.5	64,480	9.6
	DID 8M44 (2)	ITE 26-320	79,440	11.1	74,940	10.5	73,140	10.3	71,330	10.0	65,120	9.1
DID 10M44 (2)	ITE 36-385	95,160	10.9	89,770	10.3	87,590	10.0	85,400	9.8	77,910	8.9	
DID 12M44 (2)	ITE 36-460	113,400	10.9	106,980	10.3	104,380	10.0	101,760	9.8	92,830	8.9	
DID 12M44 (2)	ITE 36-520	115,690	9.9	109,140	9.3	106,430	9.0	103,720	8.8	94,450	8.0	
S C R O L L	DIO 7M44 (1)	ITE 36-385	50,850	11.7	47,970	11.0	46,820	10.7	45,650	10.5	41,670	9.6
	DIO 7M44 (1)	ITE 36-460	52,350	10.1	49,380	9.5	48,160	9.3	46,930	9.0	42,730	8.2
	DIO 8M44 (1)	ITE 36-460	59,880	11.6	56,490	10.9	55,120	10.6	53,750	10.3	49,940	9.4
	DIO 8M44 (1)	ITE 36-520	61,110	10.4	57,650	9.8	56,230	9.6	54,800	9.3	49,920	8.5
	DIO 8M44 (2)	ITE 26-270	61,050	10.5	57,590	9.9	56,170	9.6	54,740	9.4	49,870	8.5
	DIO 10M44 (2)	ITE 26-320	83,180	11.7	78,470	11.0	76,580	10.8	74,690	10.5	68,180	9.6
	DIO 10M44 (2)	ITE 36-385	86,010	9.9	81,140	9.3	79,130	9.1	77,110	8.8	70,190	8.0
	DIO 13M44 (2)	ITE 36-385	99,660	11.4	94,010	10.8	91,720	10.5	89,410	10.2	81,530	9.3
DIO 13M44 (3)	ITE 26-270	101,900	10.2	96,130	9.6	93,740	9.3	91,330	9.1	83,120	8.3	

**0°F Room Temperature**

Comp	MODEL NUMBER			AMBIENT TEMPERATURE									
				80°		90°		95°		100°		110°	
	Condensing Unit #	Evaporator	BTU/hr	TD	BTU/hr	TD	BTU/hr	TD	BTU/hr	TD	BTU/hr	TD	
HERM	RIH 100 L44 (1)	AE 16-41B	4,910	11.4	4,630	10.8	4,530	10.5	4,400	10.2	4,140	9.6	
	RIH 165 L44 (1)	AE 26-75B	9,060	11.6	8,540	10.9	8,350	10.7	8,100	10.4	7,770	10.0	
	RIH 165 L44 (1)	AE 26-92B	9,500	9.9	8,960	9.3	8,750	9.1	8,470	8.8	8,120	8.5	
	RIH 215 L44 (1)	AE 36-120B	14,150	11.3	13,340	10.7	13,040	10.4	12,650	10.1	12,140	9.7	
	RIH 215 L44 (1)	AE 36-140B	14,680	10.1	13,840	9.5	13,520	9.3	13,090	9.0	12,550	8.6	
	RIH 315 L44 (1)	AE 46-164B	18,980	11.1	17,900	10.5	17,500	10.2	16,950	9.9	16,260	9.5	
	RIH 315 L44 (1)	AE 46-185B	19,470	10.2	18,360	9.6	17,940	9.3	17,370	9.0	16,630	8.7	
SEMI-HERMETIC	RIS 100 L44 (1)	AE 26-60B	6,520	10.5	6,150	9.9	6,010	9.7	5,810	9.4	5,440	8.8	
	RIS 150 L44 (1)	AE 26-92B	10,150	10.6	9,570	10.0	9,340	9.7	9,040	9.4	8,460	8.8	
	RIS 200 L44 (1)	AE 36-120B	12,940	10.4	12,200	9.8	11,910	9.5	11,520	9.2	10,790	8.6	
	RIS 200 L44 (2)	AE 26-60B	12,920	10.4	12,180	9.8	11,890	9.6	11,500	9.3	10,780	8.7	
	RIS 250 L44 (1)	AE 36-120B	14,280	11.4	13,470	10.8	13,160	10.5	12,750	10.2	11,970	9.6	
	RIS 250 L44 (2)	AE 26-60B	14,260	11.4	13,450	10.8	13,140	10.6	12,730	10.3	11,960	9.6	
	RIS 300 L44 (1)	AE 46-164B	19,320	11.3	18,220	10.7	17,800	10.4	17,240	10.1	16,180	9.5	
	RIS 300 L44 (2)	AE 26-92B	19,780	10.3	18,660	9.7	18,220	9.5	17,630	9.2	16,530	8.6	
	RIS 100 L22 (1)	AE 26-60B	6,630	10.7	6,250	10.1	6,100	9.8	5,910	9.5	5,550	8.9	
	RIS 200 L22 (1)	AE 26-60B	7,380	11.9	6,960	11.2	6,800	11.0	6,590	10.6	6,210	10.0	
	RIS 200 L22 (1)	AE 26-75B	7,770	10.0	7,330	9.4	7,160	9.2	6,930	8.9	6,500	8.3	
	RIS 201 L22 (1)	AE 26-92B	10,230	10.6	9,650	10.0	9,420	9.8	9,130	9.5	8,570	8.9	
	RIS 201 L22 (2)	AE 16-46B	10,230	10.6	9,650	10.0	9,420	9.8	9,130	9.5	8,570	8.9	
	RIS 202 L22 (1)	AE 36-120B	12,590	10.1	11,870	9.5	11,600	9.3	11,230	9.0	10,530	8.4	
	RIS 202 L22 (2)	AE 26-60B	12,570	10.2	11,850	9.6	11,580	9.3	11,210	9.0	10,520	8.5	
RIS 300 L22 (1)	AE 46-164B	19,200	11.2	18,110	10.6	17,700	10.3	17,150	10.0	16,130	9.4		
RIS 300 L22 (2)	AE 26-92B	19,710	10.3	18,590	9.7	18,160	9.5	17,590	9.2	16,510	8.6		
DISCUS	RID 300 L44 (1)	AE 66-245B	27,820	10.9	26,240	10.3	25,630	10.0	24,800	9.7	23,270	9.1	
	RID 300 L44 (2)	AE 36-120B	27,710	11.0	26,140	10.4	25,530	10.2	24,710	9.9	23,180	9.3	
	RID 400 L44 (1)	AE 66-280B	31,870	10.9	30,060	10.3	29,350	10.1	28,390	9.8	26,600	9.1	
	RID 400 L44 (2)	AE 36-140B	31,870	10.9	30,060	10.3	29,350	10.1	28,390	9.8	26,600	9.1	
	RID 500 L44 (2)	AE 46-164B	37,520	10.9	35,390	10.3	34,550	10.1	33,430	9.8	31,330	9.2	
	RID 300 L22 (1)	AE 56-210B	24,340	11.1	22,960	10.5	22,440	10.3	21,740	10.0	20,420	9.4	
	RID 300 L22 (2)	AE 36-120B	25,070	10.1	23,650	9.5	23,090	9.2	22,350	8.9	20,960	8.4	
	RID 400 L22 (1)	AE 66-245B	27,870	10.9	26,290	10.3	25,690	10.1	24,870	9.7	23,350	9.2	
	RID 400 L22 (2)	AE 36-120B	27,750	11.1	26,170	10.5	25,580	10.2	24,770	9.9	23,260	9.3	
	RID 500 L22 (1)	AE 66-280B	33,800	11.7	31,880	11.0	31,160	10.7	30,190	10.4	28,370	9.7	
RID 500 L22 (2)	AE 46-164B	35,010	10.3	33,020	9.7	32,250	9.4	31,210	9.1	29,270	8.6		
SCROLL	RIO 200 L44 (1)	AE 26-92B	10,280	10.7	9,690	10.1	9,460	9.8	9,140	9.5	8,650	9.0	
	RIO 250 L44 (1)	AE 36-120B	13,850	11.0	13,060	10.4	12,730	10.2	12,290	9.8	11,620	9.3	
	RIO 250 L44 (2)	AE 26-60B	13,840	11.1	13,050	10.5	12,720	10.3	12,280	9.9	11,610	9.4	
	RIO 300 L44 (1)	AE 36-140B	15,930	10.9	15,020	10.3	14,640	10.0	14,140	9.7	13,370	9.2	
	RIO 300 L44 (2)	AE 26-75B	16,070	10.3	15,160	9.7	14,780	9.5	14,280	9.1	13,490	8.6	
	RIO 301 L44 (1)	AE 46-164B	18,340	10.7	17,300	10.1	16,880	9.9	16,310	9.5	15,440	9.0	
	RIO 301 L44 (2)	AE 26-75B	18,060	11.6	17,030	10.9	16,620	10.6	16,070	10.3	15,230	9.8	
	RIO 400 L44 (1)	AE 46-185B	22,660	11.8	21,370	11.1	20,870	10.9	20,180	10.5	19,140	10.0	
	RIO 400 L44 (1)	AE 56-210B	23,190	10.6	21,870	10.0	21,340	9.8	20,630	9.5	19,540	9.0	
	RIO 500 L44 (1)	AE 66-245B	27,670	10.8	26,100	10.2	25,460	10.0	24,600	9.6	23,290	9.1	
	RIO 500 L44 (2)	AE 36-120B	27,580	11.0	26,010	10.4	25,380	10.1	24,520	9.8	23,220	9.3	
	RIO 600 L44 (1)	AE 66-280B	31,930	10.9	30,120	10.3	29,400	10.1	28,410	9.8	26,920	9.2	
	RIO 600 L44 (2)	AE 36-140B	31,930	10.9	30,120	10.3	29,400	10.1	28,410	9.8	26,920	9.2	



0°F Room Temperature

Comp	MODEL NUMBER			AMBIENT TEMPERATURE									
				80°		90°		95°		100°		110°	
	Cond. Unit	#	Evaporator	BTU/hr	TD	BTU/hr	TD	BTU/hr	TD	BTU/hr	TD	BTU/hr	TD
DISCUS	DID 5L44	(2)	AE 46-164B	40,210	11.8	37,930	11.1	37,930	10.8	36,150	10.6	33,080	9.7
	DID 5L44	(2)	AE 46-185B	41,120	10.7	38,790	10.1	37,860	9.9	36,930	9.6	33,730	8.8
	DID 6L44	(2)	AE 46-185B	45,580	11.9	43,000	11.2	42,010	10.9	41,010	10.7	37,570	9.8
	DID 6L44	(2)	AE 56-210B	46,780	10.7	44,130	10.1	43,090	9.9	42,040	9.6	38,430	8.8
	DID 8L44	(2)	AE 66-245B	58,430	11.4	55,120	10.8	53,830	10.6	52,540	10.3	48,090	9.4
	DID 8L44	(2)	AE 66-280B	59,950	10.3	56,550	9.7	55,200	9.5	53,840	9.2	49,170	8.4
	DID 9L44	(2)	AE 66-280B	67,780	11.7	63,940	11.0	62,450	10.7	60,940	10.5	55,770	9.6
	DID 10L44	(2)	AE 66-280B	73,560	12.6	69,390	11.9	67,790	11.6	66,170	11.4	60,620	10.4
	DID 5L22	(1)	AE 66-280B	35,430	12.2	33,420	11.5	32,690	11.2	31,960	11.0	29,430	10.1
	DID 5L22	(2)	AE 46-164B	36,870	10.8	34,780	10.2	34,000	9.9	33,210	9.7	30,480	8.9
	DID 6L22	(2)	AE 46-185B	42,090	10.9	39,700	10.3	38,780	10.1	37,860	9.9	34,680	9.0
	DID 6L22	(2)	AE 56-210B	43,180	9.9	40,730	9.3	39,770	9.1	38,800	8.9	35,470	8.1
	DID 8L22	(2)	AE 56-210B	49,590	11.3	46,780	10.7	45,700	10.5	44,610	10.2	40,880	9.4
	DID 8L22	(2)	AE 66-245B	51,180	10.1	48,280	9.5	47,140	9.2	45,980	9.0	42,020	8.2
	DID 9L22	(2)	AE 66-245B	57,050	11.1	53,820	10.5	52,570	10.3	51,320	10.1	47,000	9.2
	DID 9L22	(2)	AE 66-280B	58,580	10.1	55,260	9.5	53,950	9.3	52,630	9.0	48,100	8.3
DID 10L22	(2)	AE 66-280B	64,410	11.0	60,760	10.4	59,360	10.2	57,950	10.0	53,090	9.1	
DISCUS	DID 5L44	(1)	ITE 36-385	41,450	10.3	39,100	9.7	38,160	9.5	37,210	9.3	33,960	8.5
	DID 5L44	(2)	ITE 36-185	41,160	10.7	38,830	10.1	37,900	9.8	36,970	9.6	33,760	8.7
	DID 6L44	(1)	ITE 36-385	46,000	11.4	43,390	10.8	42,390	10.6	41,370	10.3	37,870	9.4
	DID 6L44	(2)	ITE 36-185	45,640	11.8	43,050	11.1	42,060	10.9	41,050	10.6	37,610	9.7
	DID 8L44	(1)	ITE 36-460	57,670	12.1	54,400	11.4	53,150	11.1	51,880	10.8	47,540	9.9
	DID 8L44	(1)	ITE 36-520	59,120	10.9	55,770	10.3	54,460	10.1	53,130	9.8	48,580	9.0
	DID 8L44	(2)	ITE 26-270	59,560	10.6	56,180	10.0	54,850	9.8	53,500	9.5	48,890	8.7
	DID 9L44	(2)	ITE 26-270	67,290	12.0	63,480	11.3	62,010	11.0	60,520	10.8	55,420	9.9
	DID 9L44	(2)	ITE 26-320	69,570	10.4	65,630	9.8	64,060	9.6	62,470	9.4	57,050	8.6
	DID 10L44	(2)	ITE 26-320	75,590	11.3	71,310	10.7	69,620	10.4	67,910	10.2	62,080	9.3
	DID 10L44	(2)	ITE 36-385	78,130	9.8	73,700	9.2	71,900	9.0	70,080	8.7	63,880	8.0
	DID 12L44	(2)	ITE 36-385	82,920	10.3	78,220	9.7	76,340	9.5	74,440	9.3	67,930	8.5
	DID 15L44	(2)	ITE 36-460	103,660	10.8	97,790	10.2	95,400	10.0	92,990	9.7	84,770	8.8
	DID 15L44	(2)	ITE 36-520	105,660	9.8	99,670	9.2	97,190	9.0	94,690	8.7	86,170	8.0
	DID 5L22	(1)	ITE 26-320	36,640	11.0	34,560	10.4	33,790	10.1	33,010	9.9	30,310	9.1
	DID 5L22	(2)	ITE 26-150	36,070	11.6	34,020	10.9	33,270	10.7	32,510	10.4	29,890	9.6
	DID 5L22	(2)	ITE 36-185	37,880	9.9	35,730	9.3	34,900	9.0	34,070	8.8	31,200	8.1
	DID 6L22	(1)	ITE 36-385	42,470	10.6	40,060	10.0	39,130	9.8	38,180	9.5	34,960	8.7
	DID 6L22	(2)	ITE 36-185	42,130	10.9	39,740	10.3	38,820	10.1	37,900	9.8	34,710	9.0
	DID 8L22	(1)	ITE 36-385	48,680	12.1	45,920	11.4	44,880	11.2	43,830	10.9	40,220	10.0
DID 8L22	(1)	ITE 36-460	50,570	10.6	47,700	10.0	46,580	9.7	45,450	9.5	41,580	8.7	
DID 9L22	(1)	ITE 36-520	57,750	10.7	54,480	10.1	53,200	9.8	51,920	9.6	47,510	8.8	
DID 9L22	(2)	ITE 26-270	58,190	10.4	54,890	9.8	53,600	9.5	52,300	9.3	47,820	8.5	
DID 10L22	(2)	ITE 26-270	63,920	11.3	60,300	10.7	58,920	10.5	57,530	10.2	52,740	9.4	
DID 10L22	(2)	ITE 26-320	66,200	10.0	62,450	9.4	60,970	9.2	59,490	8.9	54,380	8.2	
DID 15L22	(2)	ITE 36-385	96,730	12.1	91,250	11.4	89,170	11.1	87,080	10.9	79,870	10.0	
DID 15L22	(2)	ITE 36-460	100,410	10.5	94,720	9.9	92,490	9.6	90,240	9.4	82,520	8.6	

## 0°F Room Temperature

Comp	MODEL NUMBER			AMBIENT TEMPERATURE									
				80°		90°		95°		100°		110°	
	Cond. Unit	#	Evaporator	BTU/hr	TD	BTU/hr	TD	BTU/hr	TD	BTU/hr	TD	BTU/hr	TD
D I S C U S	DID 5L44	(1)	UEL 2-361	40,650	11.2	38,340	10.6	37,430	10.4	36,530	10.1	33,390	9.2
	DID 5L44	(1)	UEL 2-408	41,580	10.2	39,220	9.6	38,270	9.4	37,320	9.1	34,050	8.3
	DID 6L44	(1)	UEL 2-408	46,170	11.3	43,550	10.7	42,530	10.4	41,510	10.2	37,990	9.3
	DID 6L44	(1)	UEL 3-445	46,960	10.6	44,300	10.0	43,250	9.7	42,190	9.5	38,560	8.7
	DID 6L44	(2)	UEL 2-240	47,630	10.0	44,930	9.4	43,580	9.1	42,760	8.9	39,040	8.1
	DID 8L44	(1)	UEL 3-540	59,100	10.9	55,750	10.3	54,440	10.1	53,110	9.8	48,570	9.0
	DID 8L44	(2)	UEL 2-240	57,690	12.0	54,420	11.3	53,170	11.1	51,900	10.8	47,560	9.9
	DID 8L44	(2)	UEL 2-304	60,420	10.0	57,000	9.4	55,630	9.1	54,240	8.9	49,510	8.1
	DID 9L44	(1)	UEL 3-613	68,490	11.1	64,610	10.5	63,090	10.3	61,550	10.0	56,280	9.2
	DID 9L44	(1)	UEL 3-660	69,460	10.5	65,520	9.9	63,950	9.7	62,370	9.4	56,970	8.6
	DID 9L44	(2)	UEL 2-304	68,390	11.2	64,510	10.6	62,990	10.4	61,450	10.1	56,200	9.2
	DID 10L44	(1)	UEL 3-660	75,470	11.4	71,190	10.8	69,500	10.5	67,800	10.3	61,980	9.4
	DID 10L44	(1)	UEL 4-722	76,730	10.6	72,380	10.0	70,640	9.8	68,890	9.5	62,890	8.7
	DID 10L44	(2)	UEL 2-361	76,730	10.6	72,380	10.0	70,640	9.8	68,890	9.5	62,890	8.7
	DID 12L44	(1)	UEL 4-722	81,340	11.2	76,730	10.6	74,910	10.4	73,080	10.1	66,800	9.2
DID 12L44	(1)	UEL 4-817	83,190	10.2	78,480	9.6	76,580	9.4	74,670	9.1	68,120	8.3	
DID 12L44	(2)	UEL 2-361	81,340	11.2	76,730	10.6	74,910	10.4	73,080	10.1	66,800	9.2	
DID 15L44	(1)	UEL 4-950	103,520	10.9	97,660	10.3	95,270	10.0	92,870	9.8	84,670	8.9	
DID 15L44	(2)	UEL 3-445	102,380	11.4	96,580	10.8	94,240	10.6	91,890	10.3	83,850	9.4	
D I S C U S	DID 5L22	(1)	UEL 2-304	35,820	11.8	33,790	11.1	33,060	10.9	32,310	10.6	29,720	9.8
	DID 5L22	(1)	UEL 2-361	37,330	10.3	35,210	9.7	34,410	9.5	33,600	9.3	30,810	8.5
	DID 6L22	(1)	UEL 2-361	41,510	11.4	39,160	10.8	38,270	10.6	37,370	10.3	34,270	9.5
	DID 6L22	(1)	UEL 2-408	42,620	10.4	40,200	9.8	39,260	9.6	38,310	9.4	35,060	8.6
	DID 8L22	(1)	UEL 2-408	48,870	12.0	46,100	11.3	45,050	11.0	4,400	10.8	40,360	9.9
	DID 8L22	(1)	UEL 3-445	49,800	11.2	46,980	10.6	45,900	10.3	44,800	10.1	41,030	9.2
	DID 8L22	(2)	UEL 2-240	50,590	10.5	47,720	9.9	46,600	9.7	45,470	9.5	41,590	8.7
	DID 9L22	(1)	UEL 3-540	57,730	10.7	54,460	10.1	53,180	9.8	51,900	9.6	47,490	8.8
	DID 9L22	(2)	UEL 2-240	56,310	11.8	53,120	11.1	51,900	10.8	50,680	10.6	46,470	9.7
	DID 10L22	(1)	UEL 3-540	63,350	11.8	59,760	11.1	58,410	10.8	57,040	10.6	52,330	9.7
DID 10L22	(1)	UEL 3-613	65,120	10.6	61,430	10.0	60,000	9.8	58,560	9.5	53,600	8.7	
DID 10L22	(2)	UEL 2-304	65,000	10.7	61,320	10.1	59,900	9.8	58,460	9.6	53,520	8.8	
DID 15L22	(1)	UEL 4-817	97,130	11.9	91,630	11.2	89,540	11.0	87,420	10.7	80,160	9.8	
DID 15L22	(1)	UEL 4-950	100,250	10.5	94,570	9.9	92,340	9.7	90,100	9.5	82,400	8.7	
DID 15L22	(2)	UEL 3-445	98,930	11.1	93,330	10.5	91,160	10.2	88,970	10.0	81,460	9.1	
S C R O L L	DIO 8L44	(1)	ITE 26-320	37,950	11.3	35,800	10.7	34,940	10.5	34,070	10.2	31,410	9.4
	DIO 8L44	(2)	ITE 26-150	37,510	12.0	35,380	11.3	34,540	11.1	33,690	10.8	31,080	10.8
	DIO 10L44	(1)	ITE 36-460	55,950	11.7	52,780	11.0	51,530	10.8	50,270	10.5	46,380	9.7
	DIO 10L44	(1)	ITE 36-520	57,190	10.6	53,950	10.0	52,650	9.7	51,330	9.5	47,280	8.7
	DIO 10L44	(2)	ITE 26-270	57,560	10.3	54,300	9.7	52,980	9.4	51,640	9.2	47,540	8.5
	DIO 13L44	(2)	ITE 26-270	67,480	12.0	63,660	11.3	62,160	11.1	60,640	10.8	55,960	10.0
DIO 13L44	(2)	ITE 26-320	69,580	10.5	65,640	9.9	64,040	9.6	62,430	9.4	57,480	8.6	
S C R O L L	DIO 8L44	(1)	UEL 2-304	37,320	12.3	35,200	11.6	34,370	11.3	33,530	11.0	30,940	10.2
	DIO 8L44	(1)	UEL 2-361	38,490	10.7	36,310	10.1	35,420	9.8	34,530	9.6	31,790	8.8
	DIO 10L44	(1)	UEL 3-540	57,180	10.6	53,940	10.0	52,630	9.7	51,310	9.5	47,260	8.7
	DIO 10L44	(2)	UEL 2-240	55,980	11.7	52,810	11.0	51,550	10.7	50,290	10.5	46,390	9.7
	DIO 13L44	(1)	UEL 3-613	68,590	11.1	64,700	10.5	63,140	10.3	61,580	10.0	56,760	9.3
	DIO 13L44	(1)	UEL 3-660	69,480	10.5	65,540	9.9	63,940	9.7	62,340	9.4	57,400	8.7
DIO 13L44	(2)	UEL 2-304	68,480	11.2	64,600	10.6	63,050	10.4	61,490	10.1	56,690	9.3	

**0°F Room Temperature**

Comp	MODEL NUMBER			AMBIENT TEMPERATURE									
				80°		90°		95°		100°		110°	
	Cond. Unit	#	Evaporator	BTU/hr	TD	BTU/hr	TD	BTU/hr	TD	BTU/hr	TD	BTU/hr	TD
DISCUS	VID 15L44	(1)	UEL 4-950	105,010	11.0	99,060	10.4	96,650	10.2	94,210	9.9	84,530	8.9
	VID 15L44	(2)	UEL 3-445	103,830	11.7	97,950	11.0	95,590	10.7	93,210	10.5	83,720	9.4
	VID 22L44	(1)	UEL 4-1100	122,220	11.1	115,300	10.5	112,550	10.2	109,770	10.0	98,680	9.0
	VID 22L44	(1)	UEL 4-1260	125,160	10.0	118,070	9.4	115,190	9.1	112,270	8.9	100,700	8.0
	VID 22L44	(2)	UEL 3-540	121,810	11.2	114,910	10.6	112,180	10.4	109,410	10.1	98,390	9.1
	VID 22L44	(2)	UEL 3-613	124,590	10.2	117,530	9.6	114,670	9.3	111,790	9.1	100,300	8.2
	VID 27L44	(1)	UEL 4-1380	157,310	11.3	148,400	10.7	144,850	10.5	141,260	10.2	126,960	9.2
	VID 27L44	(1)	UEL 5-1575	160,940	10.2	151,830	9.6	148,120	9.4	144,370	9.2	129,460	8.2
	VID 27L44	(2)	UEL 3-660	156,020	11.8	147,180	11.1	143,690	10.9	140,160	10.6	126,060	9.5
	VID 27L44	(2)	UEL 4-722	158,590	11.0	149,610	10.4	146,000	10.1	142,360	9.9	127,840	8.8
	VID 27L44	(2)	UEL 4-817	161,900	9.9	152,730	9.3	148,970	9.1	145,180	8.9	130,110	8.0
	VID 30L44	(1)	UEL 5-1575	178,010	11.3	167,930	10.7	163,920	10.4	159,860	10.1	143,690	9.1
	VID 30L44	(1)	UEL 5-1725	180,900	10.5	170,660	9.9	166,510	9.6	162,330	9.4	145,680	8.4
	VID 30L44	(2)	UEL 4-722	175,100	12.1	165,180	11.4	161,290	11.2	157,370	10.9	141,670	9.8
VID 30L44	(2)	UEL 4-817	179,200	10.9	169,050	10.3	164,990	10.1	160,880	9.8	144,510	8.8	
DISCU	VID 15L22	(1)	UEL 4-817	96,090	11.8	90,650	11.1	88,580	10.8	86,490	10.6	80,030	9.8
	VID 15L22	(1)	UEL 4-950	99,170	10.4	93,550	9.8	91,350	9.6	89,120	9.4	82,280	8.7
	VID 15L22	(2)	UEL 2-408	96,070	11.8	90,630	11.1	88,560	10.8	86,470	10.6	80,010	9.8
	VID 15L22	(2)	UEL 3-445	97,870	11.0	92,330	10.4	90,180	10.1	88,010	9.9	81,330	9.1
	VID 22L22	(1)	UEL 4-950	111,580	11.8	105,260	11.1	102,860	10.8	100,430	10.6	92,920	9.8
	VID 22L22	(1)	UEL 4-1100	101,190	9.2	95,460	8.7	103,400	9.4	105,980	9.6	108,530	9.9
	VID 22L22	(2)	UEL 3-540	114,630	10.6	108,140	10.0	105,600	9.8	103,040	9.5	95,160	8.8
	VID 27L22	(1)	UEL 4-1260	138,880	11.0	131,010	10.4	127,910	10.1	124,780	9.9	115,160	9.1
	VID 27L22	(1)	UEL 4-1380	141,240	10.3	133,240	9.7	130,040	9.4	126,800	9.2	116,880	8.5
	VID 27L22	(2)	UEL 3-613	138,130	11.2	130,310	10.6	127,240	10.4	124,150	10.1	114,620	9.3
	VID 27L22	(2)	UEL 3-660	140,090	10.6	132,160	10.0	129,010	9.8	125,830	9.5	116,050	8.8
	VID 30L22	(1)	UEL 4-1380	160,500	11.7	151,410	11.0	147,930	10.7	144,410	10.5	133,560	9.7
	VID 30L22	(1)	UEL 5-1575	164,910	10.5	155,570	9.9	151,890	9.6	148,190	9.4	136,780	8.7
	VID 30L22	(2)	UEL 4-722	162,050	11.2	152,870	10.6	149,330	10.3	145,740	10.1	134,690	9.3
VID 30L22	(2)	UEL 4-817	166,080	10.2	156,670	9.6	152,940	9.4	149,180	9.1	137,630	8.4	

**-10°F Room Temperature**

Comp	MODEL NUMBER			AMBIENT TEMPERATURE									
				80°		90°		95°		100°		110°	
	Cond. Unit	#	Evaporator	BTU/hr	TD	BTU/hr	TD	BTU/hr	TD	BTU/hr	TD	BTU/hr	TD
H E R M	RIH 100 L44	(1)	AE 16-36B	3,500	9.8	3,300	9.2	3,230	9.0	3,140	8.7	2,970	8.2
	RIH 165 L44	(1)	AE 26-60B	6,660	11.1	6,280	10.5	6,150	10.2	5,970	9.9	5,740	9.6
	RIH 215 L44	(1)	AE 26-92B	10,500	11.4	9,900	10.8	9,690	10.5	9,440	10.3	9,060	9.8
	RIH 315 L44	(1)	AE 36-120B	13,420	11.1	12,660	10.5	12,390	10.3	12,030	10.0	11,560	9.6
	RIH 315 L44	(1)	AE 36-140B	13,980	10.0	13,180	9.4	12,890	9.2	12,500	8.9	11,990	8.6
	RIH 315 L44	(2)	AE 26-60B	13,420	11.1	12,660	10.5	12,390	10.3	12,030	10.0	11,560	9.6
S E M I - H E R M E T I C	RIS 075 L44	(1)	AE 16-36B	3,690	10.3	3,480	9.7	3,400	9.4	3,290	9.1	3,100	8.6
	RIS 100 L44	(1)	AE 16-46B	5,020	10.9	4,730	10.3	4,620	10.0	4,480	9.7	4,230	9.2
	RIS 150 L44	(1)	AE 26-75B	7,990	10.6	7,530	10.0	7,350	9.8	7,120	9.5	6,720	9.0
	RIS 200 L44	(1)	AE 26-92B	9,940	10.8	9,370	10.2	9,150	9.9	8,860	9.6	8,380	9.1
	RIS 250 L44	(1)	AE 26-92B	10,690	11.7	10,080	11.0	9,860	10.7	9,560	10.4	9,060	9.8
	RIS 300 L44	(1)	AE 36-140B	14,950	10.7	14,100	10.1	13,780	9.8	13,350	9.5	12,630	9.0
	RIS 300 L44	(2)	AE 26-75B	15,180	10.1	14,320	9.5	13,990	9.3	13,550	9.0	12,800	8.5
	RIS 075 L22	(1)	AE 16-36B	3,760	10.4	3,540	9.8	3,460	9.6	3,360	9.3	3,160	8.8
	RIS 100 L22	(1)	AE 16-46B	4,960	10.7	4,670	10.1	4,560	9.9	4,420	9.6	4,160	9.0
	RIS 200 L22	(1)	AE 16-46B	5,470	11.9	5,160	11.2	5,050	11.0	4,890	10.6	4,610	10.0
	RIS 201 L22	(1)	AE 26-75B	7,710	10.3	7,270	9.7	7,100	9.5	6,880	9.2	6,470	8.6
	RIS 202 L22	(1)	AE 26-75B	8,900	11.9	8,390	11.2	8,210	10.9	7,970	10.6	7,510	10.0
	RIS 202 L22	(1)	AE 26-92B	9,360	10.2	8,830	9.6	8,640	9.4	8,370	9.1	7,860	8.5
	RIS 300 L22	(1)	AE 36-120B	13,880	11.6	13,090	10.9	12,810	10.7	12,440	10.4	11,730	9.8
RIS 300 L22	(2)	AE 26-60B	13,880	11.6	13,090	10.9	12,810	10.7	12,440	10.4	11,730	9.8	
D I S C U S	RID 300 L44	(1)	AE 46-185B	21,160	11.4	19,960	10.8	19,510	10.5	18,910	10.2	17,900	9.7
	RID 300 L44	(2)	AE 26-92B	21,140	11.4	19,940	10.8	19,490	10.6	18,880	10.3	17,880	9.7
	RID 400 L44	(1)	AE 56-210B	24,360	11.6	22,980	10.9	22,440	10.7	21,720	10.3	20,540	9.8
	RID 400 L44	(2)	AE 36-120B	25,010	10.4	23,590	9.8	23,020	9.6	22,260	9.3	21,000	8.7
	RID 500 L44	(1)	AE 66-280B	29,790	10.6	28,100	10.0	27,450	9.8	26,560	9.5	25,080	9.0
	RID 500 L44	(2)	AE 36-120B	28,830	12.0	27,190	11.3	26,570	11.1	25,740	10.7	24,370	10.2
	RID 300 L22	(1)	AE 46-164B	18,260	11.1	17,220	10.5	16,830	10.3	16,310	9.9	15,340	9.3
	RID 300 L22	(2)	AE 26-75B	17,860	11.9	16,840	11.2	16,480	11.0	15,980	10.6	15,040	10.0
	RID 400 L22	(1)	AE 46-185B	20,770	11.2	19,590	10.6	19,160	10.4	18,580	10.0	17,480	9.4
	RID 400 L22	(2)	AE 26-92B	20,750	11.2	19,570	10.6	19,140	10.4	18,550	10.1	17,460	9.5
RID 500 L22	(1)	AE 66-245B	26,060	10.6	24,580	10.0	24,030	9.8	23,280	9.5	21,880	8.9	
RID 500 L22	(2)	AE 36-120B	25,930	10.8	24,460	10.2	23,920	10.0	23,170	9.7	21,790	9.1	
S C R O L L	RIO 200 L44	(1)	AE 26-75B	8,270	11.1	7,800	10.5	7,660	10.2	7,410	9.9	7,030	9.4
	RIO 250 L44	(1)	AE 26-120B	11,780	9.8	11,110	9.2	10,830	9.0	10,470	8.7	9,920	8.3
	RIO 250 L44	(2)	AE 26-60B	11,780	9.8	11,110	9.2	10,830	9.0	10,470	8.7	9,920	8.3
	RIO 300 L44	(1)	AE 36-120B	12,880	10.7	12,150	10.1	11,860	9.9	11,460	9.5	10,860	9.0
	RIO 300 L44	(2)	AE 26-60B	12,880	10.7	12,150	10.1	11,860	9.9	11,460	9.5	10,860	9.0
	RIO 301 L44	(1)	AE 36-140B	15,040	10.7	14,180	10.1	13,840	9.9	13,380	9.5	12,670	9.0
	RIO 301 L44	(2)	AE 26-75B	15,220	10.2	14,350	9.6	14,000	9.3	13,520	9.0	12,800	8.5
	RIO 400 L44	(1)	AE 46-164B	18,470	11.2	17,420	10.6	17,010	10.4	16,450	10.0	15,610	9.5
	RIO 400 L44	(2)	AE 26-92B	18,890	10.2	17,820	9.6	17,390	9.4	16,810	9.1	15,930	8.6
	RIO 500 L44	(1)	AE 56-210B	22,550	10.7	21,270	10.1	20,760	9.9	20,080	9.6	19,030	9.1
	RIO 500 L44	(2)	AE 36-120B	23,080	9.6	21,770	9.1	21,230	8.8	20,510	8.5	19,420	8.1
	RIO 600 L44	(1)	AE 66-245B	26,060	10.6	24,580	10.0	23,990	9.8	23,190	9.5	21,980	9.0
RIO 600 L44	(2)	AE 36-120B	25,960	10.8	24,490	10.2	23,900	10.0	23,110	9.6	21,900	9.1	

**-10°F Room Temperature**

Comp	MODEL NUMBER			AMBIENT TEMPERATURE								
				80°		90°		95°		100°		110°
	Cond. Unit #	Evaporator	BTU/hr	TD	BTU/hr	TD	BTU/hr	TD	BTU/hr	TD	BTU/hr	TD
DISCUS	DID 5L44 (1)	AE 66-280B	32,020	11.4	30,200	10.8	29,510	10.5	28,810	10.3	26,400	9.4
	DID 5L44 (2)	AE 46-164B	33,070	10.1	31,190	9.5	30,450	9.3	29,700	9.1	27,150	8.3
	DID 6L44 (2)	AE 46-164B	32,320	11.0	30,490	10.4	33,310	10.1	32,520	9.9	29,790	9.1
	DID 6L44 (2)	AE 46-185B	37,050	10.0	34,950	9.4	34,120	9.2	33,300	9.0	30,450	8.2
	DID 8L44 (2)	AE 46-185B	45,150	12.2	42,590	11.5	41,630	11.2	40,670	11.0	37,340	10.1
	DID 8L44 (2)	AE 56-210B	46,450	11.0	43,820	10.4	42,810	10.2	41,790	9.9	38,280	9.1
	DID 9L44 (2)	AE 66-245B	54,040	11.0	50,980	10.4	49,790	10.2	48,590	9.9	44,470	9.1
	DID 9L44 (2)	AE 66-280B	55,450	9.9	52,310	9.3	51,060	9.1	49,800	8.9	45,480	8.1
DID 10L44 (2)	AE 66-280B	60,640	10.8	57,200	10.2	55,860	10.0	54,510	9.7	49,870	8.9	
DISCUS	DID 5L22 (1)	AE 66-245B	26,610	10.8	25,100	10.2	24,540	10.0	23,970	9.8	22,020	9.0
	DID 5L22 (2)	AE 36-120B	26,470	11.0	24,970	10.4	24,420	10.2	23,860	9.9	21,920	9.1
	DID 6L22 (1)	AE 66-280B	31,250	11.1	29,480	10.5	28,820	10.3	28,160	10.1	25,860	9.2
	DID 6L22 (2)	AE 46-164B	32,380	9.9	30,540	9.3	29,480	9.1	29,130	8.9	26,670	8.1
	DID 8L22 (2)	AE 46-164B	37,970	11.6	35,820	10.9	35,020	10.7	34,210	10.4	31,400	9.6
	DID 8L22 (2)	AE 46-185B	39,010	10.5	36,800	9.9	35,950	9.7	35,100	9.5	32,150	8.7
	DID 9L22 (2)	AE 46-185B	43,220	11.7	40,770	11.0	39,860	10.8	38,940	10.5	35,780	9.7
	DID 9L22 (2)	AE 56-210B	44,490	10.6	41,970	10.0	41,010	9.8	40,040	9.5	36,700	8.7
DID 10L22 (2)	AE 56-210B	48,780	11.6	46,010	10.9	44,980	10.7	43,950	10.5	40,370	9.6	
DID 10L22 (2)	AE 66-245B	50,510	10.3	47,650	9.7	46,550	9.5	45,440	9.3	41,620	8.5	
DISCUS	DID 5L44 (1)	ITE 26-270	31,760	11.8	29,960	11.1	29,280	10.8	28,590	10.6	26,210	9.7
	DID 5L44 (2)	ITE 26-150	32,480	10.8	30,640	10.2	29,930	10.0	29,210	9.7	26,730	8.9
	DID 6L44 (1)	ITE 26-320	35,950	11.2	33,910	10.6	33,130	10.3	32,350	10.1	29,660	9.3
	DID 6L44 (2)	ITE 26-150	35,430	11.8	33,420	11.1	32,670	10.9	31,910	10.6	29,280	9.8
	DID 8L44 (1)	ITE 36-385	45,560	11.9	42,980	11.2	42,010	10.9	41,030	10.7	37,640	9.8
	DID 8L44 (1)	ITE 36-460	47,320	10.3	44,640	9.7	43,600	9.5	42,540	9.2	38,910	8.5
	DID 9L44 (1)	ITE 36-520	54,690	10.5	51,590	9.9	50,370	9.7	49,140	9.4	44,930	8.6
	DID 9L44 (2)	ITE 26-270	55,080	10.2	51,960	9.6	50,730	9.4	49,480	9.2	45,210	8.4
	DID 10L44 (1)	ITE 36-520	59,700	11.4	56,320	10.8	55,020	10.6	53,710	10.3	49,210	9.5
	DID 10L44 (2)	ITE 26-270	60,180	11.1	56,770	10.5	55,450	10.3	54,120	10.0	49,550	9.2
DID 12L44 (1)	ITE 26-270	63,480	11.8	59,880	11.1	58,510	10.8	57,120	10.6	52,350	9.7	
DID 12L44 (2)	ITE 26-320	65,710	10.3	61,990	9.7	60,520	9.5	59,030	9.2	53,950	8.4	
DID 15L44 (2)	ITE 36-385	84,190	10.9	79,420	10.3	77,590	10.1	75,740	9.8	69,380	9.0	
DISCUS	DID 5L22 (1)	ITE 26-270	27,220	10.1	25,670	9.5	25,080	9.3	24,490	9.1	22,460	8.3
	DID 6L22 (1)	ITE 26-270	30,980	11.4	29,220	10.8	28,570	10.6	27,920	10.3	25,660	9.5
	DID 6L22 (2)	ITE 26-150	31,750	10.6	29,950	10.0	29,270	9.8	28,590	9.5	26,220	8.7
	DID 8L22 (1)	ITE 36-385	39,340	10.2	37,110	9.6	36,250	9.4	35,380	9.2	32,390	8.4
	DID 8L22 (2)	ITE 36-185	39,010	10.5	36,800	9.9	35,950	9.7	35,100	9.5	32,150	8.7
	DID 9L22 (1)	ITE 36-385	43,630	11.3	41,160	10.7	40,230	10.4	39,300	10.2	36,070	9.4
	DID 9L22 (2)	ITE 36-185	43,220	11.7	40,770	11.0	39,860	10.8	38,940	10.5	35,780	9.7
	DID 10L22 (1)	ITE 36-460	49,810	10.8	46,990	10.2	45,920	10.0	44,840	9.7	41,120	8.9
	DID 15L22 (2)	ITE 26-320	74,800	11.7	70,560	11.0	68,990	10.8	67,400	10.5	61,920	9.7
DID 15L22 (2)	ITE 36-385	77,970	10.1	73,550	9.5	71,850	9.3	70,120	9.1	64,210	8.3	

# SIERRA

## -10°F Room Temperature

Comp	MODEL NUMBER			AMBIENT TEMPERATURE									
				80°		90°		95°		100°		110°	
	Cond. Unit	#	Evaporator	BTU/hr	TD	BTU/hr	TD	BTU/hr	TD	BTU/hr	TD	BTU/hr	TD
D I S C U S	DID 5L44	(1)	UEL 2-304	32,120	11.3	30,300	10.7	29,600	10.4	28,890	10.2	26,470	9.3
	DID 5L44	(1)	UEL 2-361	33,250	9.9	31,360	9.3	30,620	9.1	29,860	8.8	27,280	8.1
	DID 6L44	(1)	UEL 2-361	36,370	10.7	34,310	10.1	33,520	9.9	32,720	9.7	29,960	8.9
	DID 6L44	(1)	UEL 2-408	37,270	9.8	35,160	9.2	34,330	9.0	33,490	8.8	30,610	8.0
	DID 8L44	(1)	UEL 3-445	46,360	11.1	43,730	10.5	42,720	10.3	41,710	10.0	38,210	9.2
	DID 8L44	(2)	UEL 2-240	47,080	10.5	44,410	9.9	43,370	9.7	42,330	9.4	38,730	8.6
	DID 9L44	(1)	UEL 3-540	54,370	10.8	51,290	10.2	50,090	9.9	48,870	9.7	44,700	8.8
	DID 9L44	(2)	UEL 2-240	53,030	11.9	50,020	11.2	48,880	10.9	47,720	10.6	43,740	9.8
	DID 10L44	(1)	UEL 3-540	59,330	11.8	55,970	11.1	54,690	10.8	53,390	10.6	48,940	9.7
	DID 10L44	(1)	UEL 3-613	60,910	10.6	57,460	10.0	56,110	9.8	54,750	9.5	50,070	8.7
	DID 10L44	(2)	UEL 2-304	60,810	10.7	57,360	10.1	56,010	9.9	54,660	9.6	50,000	8.8
	DID 12L44	(1)	UEL 3-613	64,280	11.2	60,640	10.6	59,230	10.3	57,810	10.1	52,930	9.2
	DID 12L44	(1)	UEL 3-660	65,250	10.6	61,550	10.0	60,100	9.7	58,640	9.5	53,620	8.7
	DID 12L44	(2)	UEL 2-304	64,170	11.3	60,530	10.7	59,130	10.4	57,710	10.2	52,840	9.3
DID 15L44	(1)	UEL 4-817	84,050	11.0	79,290	10.4	77,460	10.1	75,620	9.9	69,280	9.1	
DID 15L44	(2)	UEL 2-408	84,050	11.0	79,290	10.4	77,460	10.1	75,620	9.9	69,280	9.1	
D I S C U S	DID 5L22	(1)	UEL 2-240	26,020	11.7	24,540	11.0	24,010	10.7	23,460	10.5	21,590	9.6
	DID 6L22	(1)	UEL 2-304	31,360	11.0	29,580	10.4	28,910	10.2	28,250	9.9	25,930	9.1
	DID 8L22	(1)	UEL 2-361	38,240	11.3	36,070	10.7	35,260	10.4	34,440	10.2	31,590	9.3
	DID 8L22	(1)	UEL 2-408	39,280	10.3	37,050	9.7	36,190	9.5	35,320	9.2	32,340	8.5
	DID 9L22	(1)	UEL 2-408	43,550	11.3	41,080	10.7	40,160	10.5	39,230	10.3	36,020	9.4
	DID 9L22	(1)	UEL 3-445	44,410	10.7	41,890	10.1	40,930	9.8	39,960	9.6	36,630	8.8
	DID 9L22	(2)	UEL 2-240	45,120	10.1	42,560	9.5	41,570	9.3	40,570	9.1	37,150	8.3
	DID 10L22	(1)	UEL 3-445	48,660	11.7	45,900	11.0	44,880	10.8	43,850	10.5	40,290	9.7
	DID 10L22	(2)	UEL 2-240	49,520	11.0	46,710	10.4	45,650	10.2	44,590	9.9	40,910	9.1
	DID 15L22	(1)	UEL 4-722	75,740	11.2	71,450	10.6	69,840	10.3	68,210	10.1	62,610	9.3
DID 15L22	(2)	UEL 2-361	75,740	11.2	71,450	10.6	69,840	10.3	68,210	10.1	62,610	9.3	
DID 15L22	(2)	UEL 2-408	77,840	10.2	73,430	9.6	71,730	9.4	70,010	9.2	64,120	8.4	
S C R O L L	DIO 8L44	(1)	ITE 26-270	30,780	11.3	29,030	10.7	28,340	10.5	27,650	10.2	25,510	9.4
	DIO 8L44	(2)	ITE 26-150	31,370	10.5	29,590	9.9	28,880	9.6	28,160	9.4	25,950	8.6
	DIO 10L44	(1)	ITE 36-385	44,960	11.7	42,410	11.0	41,420	10.8	40,420	10.5	37,340	9.7
	DIO 10L44	(1)	ITE 36-460	46,500	10.1	43,860	9.5	42,800	9.3	41,740	9.1	38,460	8.4
	DIO 13L44	(1)	ITE 36-460	54,580	11.9	51,490	11.2	50,280	10.9	49,070	10.7	45,320	9.8
	DIO 13L44	(1)	ITE 36-520	55,890	10.7	52,720	10.1	51,450	9.9	50,180	9.6	46,270	8.9
DIO 13L44	(2)	ITE 26-270	56,260	10.4	53,070	9.8	51,800	9.6	50,500	9.3	46,550	8.6	
S C R O L L	DIO 8L44	(1)	UEL 2-304	31,060	10.9	29,300	10.3	28,600	10.1	27,900	9.8	25,730	9.1
	DIO 10L44	(1)	UEL 2-408	44,890	11.8	42,340	11.1	41,360	10.8	40,360	10.6	37,290	9.8
	DIO 10L44	(1)	UEL 3-445	45,650	10.9	43,060	10.3	42,040	10.1	41,010	9.9	37,840	9.1
	DIO 10L44	(2)	UEL 2-240	46,280	10.3	43,660	9.7	42,610	9.5	41,550	9.3	38,300	8.5
	DIO 13L44	(1)	UEL 3-540	55,580	11.0	52,430	10.4	51,180	10.1	49,920	9.9	46,050	9.1
DIO 13L44	(1)	UEL 3-613	56,840	10.0	53,620	9.4	52,320	9.1	51,000	8.9	46,970	8.2	

**-10°F Room Temperature**

Comp	MODEL NUMBER		AMBIENT TEMPERATURE											
			80°		90°		95°		100°		110°			
	Cond.	Unit #	Evaporator	BTU/hr	TD	BTU/hr	TD	BTU/hr	TD	BTU/hr	TD	BTU/hr	TD	
DISCUS	VID	15L44	(1)	UEL 4-817	85,200	11.1	80,370	10.5	78,520	10.3	76,660	10.0	69,170	9.0
	VID	15L44	(1)	UEL 4-950	87,870	9.9	82,890	9.3	80,930	9.1	78,950	8.9	71,030	8.0
	VID	15L44	(2)	UEL 2-408	85,200	11.1	80,370	10.5	78,520	10.3	76,660	10.0	69,170	9.0
	VID	15L44	(2)	UEL 3-445	86,720	10.4	81,810	9.8	79,900	9.6	77,970	9.4	70,240	8.4
	VID	22L44	(1)	UEL 4-950	98,800	11.1	93,200	10.5	91,000	10.2	88,770	10.0	79,860	9.0
	VID	22L44	(2)	UEL 3-445	97,520	11.8	92,000	11.1	89,850	10.8	87,670	10.5	78,970	9.5
	VID	22L44	(2)	UEL 3-540	101,120	10.0	95,390	9.4	93,080	9.2	90,750	9.0	81,460	8.1
	VID	22L44	(3)	UEL 2-304	97,990	11.4	92,440	10.8	90,260	10.6	88,070	10.3	79,300	9.3
	VID	27L44	(1)	UEL 4-1100	124,060	12.1	117,030	11.4	114,340	11.1	111,620	10.8	100,720	9.8
	VID	27L44	(1)	UEL 4-1260	127,540	10.8	120,320	10.2	117,480	10.0	114,610	9.7	103,150	8.8
	VID	27L44	(2)	UEL 3-613	126,860	11.0	119,670	10.4	116,860	10.2	114,030	9.9	102,670	9.0
	VID	27L44	(2)	UEL 3-660	128,680	10.4	121,390	9.8	118,500	9.6	115,580	9.4	103,940	8.4
	VID	27L44	(3)	UEL 2-408	126,860	11.0	119,670	10.4	116,860	10.2	114,030	9.9	102,670	9.0
	VID	30L44	(1)	UEL 4-1260	140,680	12.0	132,710	11.3	129,650	11.0	126,560	10.7	114,180	9.7
	VID	30L44	(1)	UEL 4-1380	143,350	11.1	135,230	10.5	132,060	10.2	128,850	10.0	116,040	9.0
	VID	30L44	(2)	UEL 3-660	142,060	11.6	134,010	10.9	130,900	10.6	127,750	10.3	115,150	9.3
VID	30L44	(3)	UEL 3-445	142,380	11.4	134,320	10.8	131,200	10.5	128,030	10.3	115,380	9.2	
DISCUS	VID	15L22	(1)	UEL 4-722	74,850	11.1	70,610	10.5	69,010	10.2	67,390	10.0	62,410	9.2
	VID	15L22	(1)	UEL 4-817	76,900	10.1	72,540	9.5	70,860	9.3	69,160	9.0	63,910	8.4
	VID	15L22	(2)	UEL 2-361	74,870	11.0	70,630	10.4	69,030	10.2	67,420	10.0	62,430	9.2
	VID	15L22	(2)	UEL 2-408	76,900	10.1	72,540	9.5	70,860	9.3	69,160	9.0	63,910	8.4
	VID	22L22	(1)	UEL 4-817	86,520	11.3	81,620	10.7	79,760	10.4	77,870	10.2	72,070	9.4
	VID	22L22	(1)	UEL 4-950	89,310	10.1	84,250	9.5	82,270	9.2	80,270	9.0	74,110	8.3
	VID	22L22	(2)	UEL 2-408	86,520	11.3	81,620	10.7	79,760	10.4	77,870	10.2	72,070	9.1
	VID	22L22	(2)	UEL 3-445	88,120	10.6	83,130	10.0	81,200	9.8	79,250	9.5	73,240	8.8
	VID	22L22	(3)	UEL 2-304	88,560	10.4	83,540	9.8	81,590	9.6	79,620	9.3	73,560	8.6
	VID	27L22	(1)	UEL 4-950	106,490	12.0	100,460	11.3	98,230	11.0	95,970	10.8	88,970	10.0
	VID	27L22	(1)	UEL 4-1100	110,130	10.7	103,890	10.1	101,500	9.9	99,090	9.6	91,640	8.9
	VID	27L22	(2)	UEL 3-540	109,670	10.8	103,460	10.2	101,100	10.0	98,700	9.8	91,310	9.0
	VID	27L22	(2)	UEL 3-613	112,610	9.9	106,230	9.3	103,740	9.0	101,220	8.8	93,460	8.2
	VID	27L22	(3)	UEL 2-361	109,770	10.8	103,550	10.2	101,180	10.0	98,790	9.7	91,380	9.0
	VID	30L22	(1)	UEL 4-1100	122,700	11.9	115,750	11.2	113,160	11.0	110,530	10.7	102,400	9.9
	VID	30L22	(1)	UEL 4-1260	126,460	10.7	119,300	10.1	116,540	9.9	113,750	9.7	105,160	8.9
VID	30L22	(2)	UEL 3-613	125,720	10.9	118,600	10.3	115,870	10.1	113,110	9.9	104,620	9.1	
VID	30L22	(2)	UEL 3-660	127,680	10.4	120,450	9.8	117,640	9.5	114,800	9.3	106,060	8.6	
VID	30L22	(3)	UEL 2-408	125,720	10.9	118,600	10.3	115,870	10.1	113,110	9.9	104,620	9.1	

# SIERRA

## -20°F Room Temperature

Comp	MODEL NUMBER			AMBIENT TEMPERATURE									
				80°		90°		95°		100°		110°	
	Cond. Unit	#	Evaporator	BTU/hr	TD	BTU/hr	TD	BTU/hr	TD	BTU/hr	TD	BTU/hr	TD
HERM	RIH 165 L44	(1)	AE 16-41B	4,390	11.2	4,140	10.6	4,210	9.6	3,950	10.1	3,800	9.7
	RIH 165 L44	(1)	AE 16-46B	4,560	10.4	4,300	9.8	4,520	9.7	4,090	9.3	3,940	9.0
	RIH 215 L44	(1)	AE 26-75B	7,230	10.2	6,820	9.6	6,670	9.4	6,500	9.1	6,230	8.8
	RIH 315 L44	(1)	AE 26-92B	10,060	11.6	9,490	10.9	9,280	10.7	9,010	10.4	8,660	9.9
SEMI-HERM	RIS 100 L44	(1)	AE 16-36B	3,810	11.2	3,590	10.6	3,510	10.3	3,410	10.0	3,200	9.4
	RIS 150 L44	(1)	AE 26-60B	6,090	10.7	5,740	10.1	5,610	9.8	5,440	9.5	5,100	8.9
	RIS 200 L44	(1)	AE 26-75B	7,580	10.7	7,150	10.1	6,990	9.8	6,770	9.5	6,630	8.9
	RIS 250 L44	(1)	AE 26-75B	7,710	10.8	7,270	10.2	7,120	10.0	6,910	9.7	6,520	9.2
	RIS 300 L44	(1)	AE 36-120B	11,150	9.8	10,510	9.2	10,270	9.0	9,960	8.7	9,360	8.2
	RIS 100 L22	(1)	AE 16-36B	3,620	10.6	3,410	10.0	3,330	9.8	3,230	9.5	3,040	8.9
	RIS 200 L22	(1)	AE 16-41B	4,130	10.6	3,890	10.0	3,800	9.7	3,680	9.4	3,470	8.9
	RIS 201 L22	(1)	AE 16-46B	5,170	11.8	4,870	11.1	4,770	10.8	4,640	10.5	4,380	10.0
	RIS 202 L22	(1)	AE 26-60B	6,580	11.6	6,200	10.9	6,060	10.6	5,880	10.3	5,540	9.7
RIS 300 L22	(1)	AE 26-92B	9,890	11.3	9,330	10.7	9,130	10.5	8,870	10.2	8,370	9.6	
DISCUS	RID 300 L44	(1)	AE 46-164B	15,960	10.6	15,050	10.0	14,710	9.8	14,260	9.5	13,410	8.9
	RID 300 L44	(2)	AE 26-75B	15,750	11.1	14,850	10.5	14,520	10.2	14,080	9.9	13,240	9.3
	RID 400 L44	(1)	AE 46-185B	19,510	11.0	18,400	10.4	17,970	10.2	17,400	9.9	16,320	9.3
	RID 400 L44	(2)	AE 26-92B	19,460	11.1	18,350	10.5	17,930	10.3	17,360	10.0	16,280	9.4
	RID 500 L44	(1)	AE 56-210B	22,610	11.3	21,330	10.7	20,850	10.4	20,190	10.1	18,950	9.5
	RID 500 L44	(2)	AE 36-120B	23,250	10.2	21,930	9.6	21,420	9.4	20,720	9.1	19,420	8.5
	RID 300 L22	(1)	AE 36-120B	13,070	11.4	12,330	10.8	12,060	10.6	11,700	10.3	11,030	9.7
	RID 300 L22	(2)	AE 26-60B	13,070	11.4	12,330	10.8	12,060	10.6	11,700	10.3	11,030	9.7
	RID 400 L22	(1)	AE 36-140B	14,910	11.2	14,060	10.6	13,760	10.3	13,350	10.0	12,590	9.5
	RID 400 L22	(2)	AE 26-75B	15,170	10.7	14,310	10.1	14,000	9.9	13,580	9.6	12,790	9.0
RID 500 L22	(1)	AE 46-185B	18,850	10.7	17,780	10.1	17,400	9.9	16,870	9.6	15,890	9.0	
RID 500 L22	(2)	AE 26-92B	18,800	10.8	17,730	10.2	17,350	10.0	16,820	9.7	15,850	9.1	
SCROLL	RIO 200 L44	(1)	AE 26-60B	6,430	11.2	6,060	10.6	5,920	10.4	5,740	10.1	5,450	9.6
	RIO 250 L44	(1)	AE 26-92B	9,270	10.6	8,740	10.0	8,540	9.8	8,260	9.5	7,850	9.0
	RIO 300 L44	(1)	AE 26-92B	10,180	11.7	9,600	11.0	9,380	10.8	9,090	10.4	8,650	9.9
	RIO 300 L44	(1)	AE 36-120B	10,790	9.4	10,170	8.9	9,920	8.7	9,600	8.4	9,100	8.0
	RIO 301 L44	(1)	AE 36-120B	12,130	10.6	11,440	10.0	11,170	9.8	10,790	9.5	10,230	9.0
	RIO 301 L44	(2)	AE 26-60B	12,130	10.6	11,440	10.0	11,170	9.8	10,790	9.5	10,230	9.0
	RIO 400 L44	(1)	AE 36-140B	14,180	10.7	13,370	10.1	13,070	9.8	12,660	9.5	12,040	9.0
	RIO 500 L44	(1)	AE 46-164B	17,710	11.8	16,700	11.1	16,320	10.9	15,790	10.5	15,000	10.0
RIO 600 L44	(1)	AE 46-185B	20,270	11.6	19,120	10.9	18,680	10.6	18,080	10.3	17,160	9.7	
RIO 600 L44	(1)	AE 56-210B	20,790	10.4	19,610	9.8	19,140	9.6	18,510	9.3	17,560	8.8	



**-20°F Room Temperature**

Comp	MODEL NUMBER			AMBIENT TEMPERATURE								
				80°		90°		95°		100°		110°
	Cond. Unit #	Evaporator	BTU/hr	TD	BTU/hr	TD	BTU/hr	TD	BTU/hr	TD	BTU/hr	TD
DISCUS	DID 5L44 (1)	AE 66-245B	24,850	10.7	23,440	10.1	22,900	9.8	22,370	9.6	20,510	8.8
	DID 5L44 (2)	AE 36-120B	24,720	10.8	23,320	10.2	22,790	10.0	22,270	9.8	20,420	9.0
	DID 6L44 (1)	AE 66-245B	27,000	11.6	25,470	10.9	24,900	10.7	24,330	10.4	22,370	9.6
	DID 6L44 (2)	AE 36-120B	26,850	11.8	25,330	11.1	24,770	10.9	24,210	10.6	22,260	9.8
	DID 8L44 (2)	AE 46-164B	34,850	11.7	32,870	11.0	32,130	10.7	31,390	10.5	28,820	9.6
	DID 8L44 (2)	AE 46-185B	36,110	10.3	34,060	9.7	33,270	9.4	32,470	9.2	29,730	8.4
	DID 9L44 (2)	AE 46-185B	41,180	11.7	38,840	11.0	37,960	10.8	37,080	10.5	34,030	9.7
	DID 9L44 (2)	AE 56-210B	42,350	10.6	39,950	10.0	39,020	9.8	38,090	9.5	34,880	8.7
	DID 10L44 (2)	AE 56-210B	45,900	11.4	43,300	10.8	42,330	10.6	41,340	10.3	37,960	9.5
DID 10L44 (2)	AE 66-245B	47,480	10.2	44,790	9.6	43,750	9.4	42,700	9.2	39,110	8.4	
DID 12L44 (2)	AE 66-245B	49,690	10.7	46,870	10.1	45,810	9.8	44,740	9.6	41,040	8.8	
DISCUS	DID 5L22 (1)	AE 46-185B	19,190	10.9	18,100	10.3	17,710	10.1	17,310	9.8	15,940	9.1
	DID 5L22 (2)	AE 26-92B	19,130	11.0	18,040	10.4	17,650	10.1	17,260	9.9	15,900	9.1
	DID 6L22 (1)	AE 56-210B	22,890	11.4	21,590	10.8	21,130	10.6	20,670	10.3	19,040	9.5
	DID 6L22 (2)	AE 36-120B	23,690	10.4	22,340	9.8	21,840	9.6	21,350	9.4	19,620	8.6
	DID 8L22 (1)	AE 66-280B	28,880	10.8	27,240	10.2	26,630	10.0	26,010	9.8	23,890	9.0
	DID 8L22 (2)	AE 36-140B	28,880	10.8	27,240	10.2	26,630	10.0	26,010	9.8	23,890	9.0
	DID 9L22 (1)	AE 66-280B	31,380	11.8	29,600	11.1	28,970	10.9	28,330	10.6	26,120	9.8
	DID 9L22 (2)	AE 46-164B	32,390	10.8	30,550	10.2	29,880	10.0	29,200	9.7	26,860	8.9
DID 10L22 (2)	AE 46-164B	35,240	11.8	33,240	11.1	32,530	10.8	31,810	10.6	29,310	9.8	
DID 10L22 (2)	AE 46-185B	36,710	10.4	34,630	9.8	33,850	9.6	33,070	9.4	30,380	8.6	
DISCUS	DID 5L44 (1)	ITE 26-270	25,380	9.9	23,940	9.3	23,380	9.1	22,820	8.9	20,890	8.1
	DID 6L44 (1)	ITE 26-270	27,640	10.7	26,070	10.1	25,480	9.9	24,880	9.7	22,820	8.9
	DID 8L44 (1)	ITE 26-320	34,980	11.4	33,000	10.8	32,260	10.6	31,510	10.3	28,920	9.5
	DID 8L44 (1)	ITE 36-385	36,420	10.0	34,350	9.4	33,550	9.1	32,740	8.9	29,960	8.2
	DID 9L44 (1)	ITE 36-385	41,570	11.3	39,210	10.7	38,320	10.4	37,420	10.2	34,310	9.3
	DID 9L44 (2)	ITE 36-185	41,180	11.7	38,840	11.0	37,960	10.8	37,080	10.5	34,030	9.7
	DID 10L44 (1)	ITE 36-460	46,860	10.7	44,200	10.1	43,190	9.9	42,170	9.6	38,650	8.8
	DID 10L44 (2)	ITE 36-185	44,470	12.6	41,950	11.9	41,040	11.7	40,110	11.4	36,920	10.5
	DID 12L44 (1)	ITE 36-460	48,980	11.1	46,200	10.5	45,170	10.3	44,130	10.1	40,520	9.2
DID 12L44 (1)	ITE 36-520	50,350	10.2	47,500	9.6	46,410	9.4	45,310	9.1	41,520	8.4	
DID 15L44 (2)	ITE 26-320	65,220	10.7	61,520	10.1	60,120	9.9	58,700	9.6	53,840	8.8	
DISCUS	DID 5L22 (1)	ITE 36-185	19,190	10.9	18,100	10.3	17,710	10.1	17,310	9.8	15,940	9.1
	DID 6L22 (2)	ITE 26-130	24,160	9.8	22,790	9.2	22,280	9.0	21,760	8.8	19,970	8.0
	DID 8L22 (1)	ITE 26-270	28,640	11.1	27,010	10.5	26,410	10.3	25,810	10.0	23,710	9.2
	DID 8L22 (2)	ITE 26-130	28,390	11.4	26,780	10.8	26,190	10.6	25,590	10.3	23,530	9.5
	DID 9L22 (1)	ITE 26-320	32,530	10.7	30,680	10.1	30,000	9.8	29,320	9.6	26,960	8.8
	DID 9L22 (2)	ITE 26-150	32,000	11.1	30,180	10.5	29,530	10.3	28,860	10.1	26,570	9.3
	DID 10L22 (1)	ITE 26-320	35,400	11.6	33,390	10.9	32,670	10.7	31,950	10.5	29,420	9.6
	DID 10L22 (2)	ITE 36-185	36,710	10.4	34,630	9.8	33,850	9.6	33,070	9.4	30,380	8.6
	DID 15L22 (1)	ITE 36-520	55,750	11.2	52,590	10.6	51,450	10.4	50,300	10.2	46,300	9.3
DID 15L22 (2)	ITE 26-270	56,290	10.9	53,100	10.3	51,940	10.1	50,770	9.9	46,690	9.1	

**-20°F Room Temperature**

Comp	MODEL NUMBER		AMBIENT TEMPERATURE									
			80°		90°		95°		100°		110°	
	Cond. Unit	# Evaporator	BTU/hr	TD	BTU/hr	TD	BTU/hr	TD	BTU/hr	TD	BTU/hr	TD
D I S C U S	DID 5L44	(1) UEL 2-240	24,230	11.6	22,850	10.9	22,340	10.7	21,840	10.4	20,060	9.6
	DID 6L44	(1) UEL 2-304	27,800	10.5	26,220	9.9	25,630	9.7	25,020	9.5	22,950	8.7
	DID 8L44	(1) UEL 2-361	35,220	11.2	33,220	10.6	32,470	10.3	31,710	10.1	29,090	9.3
	DID 8L44	(1) UEL 2-408	36,170	10.2	34,120	9.6	33,330	9.4	32,530	9.2	29,780	8.4
	DID 9L44	(1) UEL 2-408	41,250	11.7	38,910	11.0	38,040	10.7	37,150	10.5	34,090	9.6
	DID 9L44	(1) UEL 3-445	42,060	10.8	39,670	10.2	38,760	10.0	37,830	9.8	34,660	9.0
	DID 10L44	(1) UEL 3-445	45,540	11.8	42,960	11.1	42,000	10.8	41,030	10.6	37,700	9.7
	DID 10L44	(1) UEL 3-540	47,570	10.1	44,870	9.5	43,830	9.3	42,780	9.1	39,170	8.3
	DID 10L44	(2) UEL 2-240	46,370	11.1	43,740	10.5	42,750	10.2	41,750	10.0	38,300	9.2
	DID 12L44	(1) UEL 3-540	49,780	10.6	46,960	10.0	45,890	9.8	44,820	9.5	41,110	8.7
	DID 12L44	(2) UEL 2-240	48,430	11.6	45,680	10.9	44,570	10.7	43,650	10.4	40,120	9.6
	DID 15L44	(1) UEL 3-660	64,300	11.2	60,660	10.6	59,300	10.3	57,920	10.1	53,180	9.3
DID 15L44	(1) UEL 4-722	65,610	10.5	61,890	9.9	60,480	9.6	59,050	9.4	54,130	8.6	
DID 15L44	(2) UEL 2-361	65,630	10.5	61,910	9.9	60,500	9.6	59,060	9.4	54,140	8.6	
D I S C U S	DID 5L22	(1) UEL 1-193	18,950	11.2	17,870	10.6	17,490	10.4	17,110	10.2	15,760	9.4
	DID 6L22	(1) UEL 2-240	23,170	11.0	21,850	10.4	21,380	10.2	20,900	10.0	19,240	9.2
	DID 8L22	(1) UEL 2-304	28,830	10.9	27,190	10.3	26,580	10.1	25,970	9.8	23,850	9.0
	DID 9L22	(1) UEL 2-304	31,310	11.9	29,530	11.2	28,910	10.9	28,270	10.7	26,070	9.9
	DID 9L22	(1) UEL 2-361	32,760	10.4	30,900	9.8	30,220	9.6	29,520	9.4	27,130	8.6
	DID 10L22	(1) UEL 2-361	35,670	11.3	33,650	10.7	32,920	10.5	32,180	10.2	29,620	9.4
	DID 10L22	(1) UEL 2-408	36,790	10.4	34,700	9.8	33,920	9.6	33,140	9.3	30,430	8.6
	DID 10L22	(2) UEL 1-193	36,290	10.8	34,230	10.2	33,480	10.0	32,720	9.7	30,080	8.9
	DID 15L22	(1) UEL 3-540	54,990	11.7	51,870	11.0	50,760	10.8	49,460	10.6	45,740	9.7
	DID 15L22	(1) UEL 3-613	56,810	10.6	53,590	10.0	52,400	9.8	51,210	9.6	47,070	8.8
DID 15L22	(2) UEL 2-304	56,670	10.7	53,460	10.1	52,280	9.9	51,090	9.7	46,970	8.9	
S C R O L L	DIO 8L44	(1) AE 66-245B	24,850	10.7	23,440	10.1	22,890	9.8	22,330	9.6	20,610	8.8
	DIO 8L44	(2) AE 36-120B	24,750	10.8	23,340	10.2	22,790	10.0	22,240	9.8	20,540	9.0
	DIO 10L44	(2) AE 46-164B	35,270	11.8	33,270	11.1	32,510	10.8	31,750	10.6	29,370	9.8
	DIO 10L44	(2) AE 46-185B	36,470	10.4	34,400	9.8	33,590	9.5	32,770	9.3	30,250	8.6
	DIO 13L44	(2) AE 46-185B	42,930	12.2	40,500	11.5	39,570	11.2	38,640	11.0	35,750	10.2
	DIO 13L44	(2) AE 56-210B	44,100	11.0	41,600	10.4	40,630	10.2	39,640	9.9	36,610	9.1
	DIO 8L44	(1) ITE 26-270	25,320	9.9	23,880	9.3	23,300	9.1	22,730	8.8	20,950	8.1
	DIO 10L44	(1) ITE 26-320	35,400	11.6	33,390	10.9	32,630	10.7	31,860	10.4	29,470	9.7
	DIO 13L44	(1) ITE 36-385	43,330	11.8	40,870	11.1	39,920	10.9	38,970	10.6	36,040	9.8
	DIO 13L44	(1) ITE 36-460	44,890	10.3	42,340	9.7	41,330	9.4	40,310	9.2	37,180	8.5
	DIO 8L44	(1) UEL 2-240	24,310	11.7	22,930	11.0	22,400	10.7	21,870	10.5	20,220	9.7
	DIO 8L44	(1) UEL 2-304	25,430	9.6	23,990	9.1	23,410	8.9	22,830	8.6	21,040	8.0
	DIO 10L44	(1) UEL 2-361	35,620	11.3	33,600	10.7	32,830	10.4	32,050	10.2	29,630	9.4
	DIO 10L44	(1) UEL 2-408	36,520	10.3	34,450	9.7	33,640	9.5	32,820	9.2	30,290	8.5
	DIO 13L44	(1) UEL 2-408	43,010	12.1	40,570	11.4	39,640	11.2	38,710	10.9	35,810	10.1
DIO 13L44	(1) UEL 3-445	43,800	11.3	41,320	10.7	40,360	10.4	39,390	10.2	36,400	9.4	
DIO 13L44	(1) UEL 3-540	45,460	9.6	42,880	9.1	41,850	8.9	40,800	8.7	37,600	8.0	
DIO 13L44	(2) UEL 2-240	44,480	10.6	41,960	10.0	40,970	9.8	39,970	9.6	36,890	8.8	

**-20°F Room Temperature**

Comp	MODEL NUMBER		AMBIENT TEMPERATURE									
			80°		90°		95°		100°		110°	
	Cond. Unit #	Evaporator	BTU/hr	TD	BTU/hr	TD	BTU/hr	TD	BTU/hr	TD	BTU/hr	TD
D I S C U S	VID 15L44 (2)	ITE 26-270	63,390	12.3	59,800	11.6	58,500	11.4	57,180	11.1	51,860	10.1
	VID 15L44 (2)	ITE 26-320	66,090	10.8	62,340	10.2	60,930	10.0	59,500	9.7	53,760	8.8
	VID 22L44 (2)	ITE 26-320	75,410	12.4	71,140	11.7	69,520	11.4	67,880	11.1	61,300	10.0
	VID 22L44 (2)	ITE 36-385	78,370	10.7	73,930	10.1	72,180	9.8	70,410	9.6	63,360	8.6
	VID 22L44 (3)	ITE 26-270	79,100	10.3	74,620	9.7	72,840	9.4	71,040	9.2	63,870	8.3
	VID 27L44 (2)	ITE 36-460	98,870	11.2	93,270	10.6	91,150	10.4	89,000	10.2	80,360	9.2
	VID 27L44 (2)	ITE 36-520	101,470	10.3	95,720	9.7	93,480	9.4	91,220	9.2	82,170	8.3
	VID 27L44 (3)	ITE 26-320	99,830	10.9	94,170	10.3	92,000	10.0	89,810	9.8	81,020	8.9
	VID 30L44 (2)	ITE 36-520	111,460	11.2	105,150	10.6	102,750	10.4	100,310	10.1	90,550	9.1
	VID 30L44 (3)	ITE 26-320	109,490	12.0	103,290	11.3	100,970	11.0	98,610	10.8	89,170	9.7
VID 30L44 (3)	ITE 36-385	113,990	10.4	107,530	9.8	105,020	9.5	102,480	9.3	92,320	8.4	
D I S C U S	VID 15L44 (1)	UEL 3-660	65,150	11.3	61,460	10.7	60,090	10.5	58,700	10.2	53,100	9.2
	VID 15L44 (1)	UEL 4-722	66,490	10.6	62,720	10.0	61,290	9.8	59,850	9.5	54,040	8.6
	VID 15L44 (2)	UEL 2-361	66,490	10.6	62,720	10.0	61,290	9.8	59,850	9.5	54,040	8.6
	VID 22L44 (1)	UEL 4-722	75,870	12.1	71,570	11.4	69,930	11.1	68,270	10.9	61,620	9.8
	VID 22L44 (1)	UEL 4-817	77,880	10.9	73,470	10.3	71,740	10.1	70,000	9.8	63,020	8.9
	VID 22L44 (2)	UEL 2-361	75,900	12.1	71,600	11.4	69,950	11.1	68,300	10.9	61,640	9.8
	VID 22L44 (2)	UEL 2-408	77,860	10.9	73,450	10.3	71,720	10.1	69,980	9.9	63,010	8.9
	VID 27L44 (1)	UEL 4-950	97,540	11.8	92,010	11.1	89,940	10.9	87,850	10.6	79,420	9.6
	VID 27L44 (1)	UEL 4-1100	100,770	10.5	95,060	9.9	92,850	9.7	90,620	9.5	81,680	8.5
	VID 27L44 (2)	UEL 3-540	100,400	10.7	94,710	10.1	92,510	9.8	90,300	9.6	81,420	8.7
	VID 30L44 (1)	UEL 4-1100	110,630	11.6	104,360	10.9	101,990	10.7	99,590	10.4	89,970	9.4
	VID 30L44 (1)	UEL 4-1260	113,890	10.4	107,440	9.8	104,930	9.6	102,390	9.3	92,240	8.4
	VID 30L44 (2)	UEL 3-540	110,170	11.8	103,930	11.1	101,580	10.8	99,200	10.5	89,650	9.5
VID 30L44 (2)	UEL 3-613	113,230	10.6	106,820	10.0	104,340	9.8	101,830	9.5	91,790	8.6	

## Evaporator

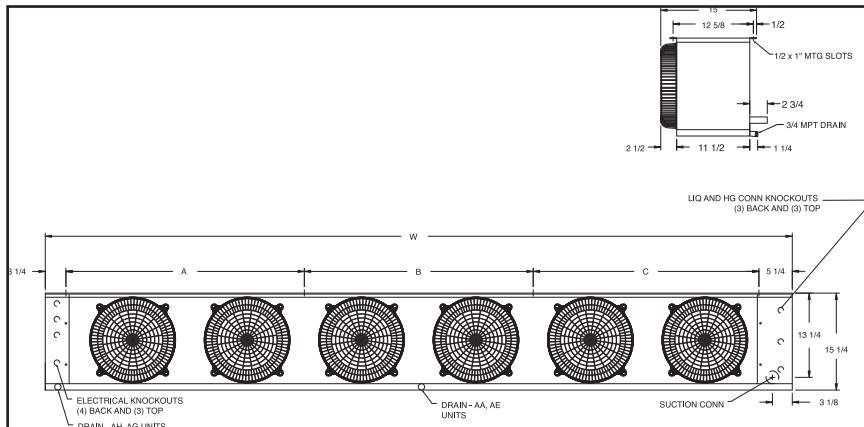
MODEL		Connect.* (ODS)		Motor Amps			Total Motor Watts			Heater Amps 230V	Heater Amps 460/1	Qty of Hang-ers	Unit Dimensions (Inches)				Approx. Ship Wt. (lbs)
AA	AE	AA Suction	AE Suction	SP 230/1	PSC 230/1	ECM 230/1	SP	PSC	ECM				A	B	C	W	
18-41B	—	5/8	—	1.0	0.5	0.45	120	85	47	—	—	2	19	—	—	27.5	43
18-53B	—	5/8	—	1.0	0.5	0.45	120	85	47	—	—	2	19	—	—	27.5	46
18-66B	—	5/8	—	1.0	0.5	0.45	120	85	47	—	—	2	19	—	—	27.5	50
28-76B	—	5/8	—	2.0	1.0	0.90	240	170	94	—	—	2	33	—	—	41.5	64
28-97B	—	7/8	—	2.0	1.0	0.90	240	170	94	—	—	2	33	—	—	41.5	69
28-106B	—	7/8	—	2.0	1.0	0.90	240	170	94	—	—	2	37	—	—	45.5	71
28-122B	—	7/8	—	2.0	1.0	0.90	240	170	94	—	—	2	33	—	—	41.5	74
28-134B	—	7/8	—	2.0	1.0	0.90	240	170	94	—	—	2	37	—	—	45.5	77
38-160B	—	1-1/8	—	3.0	1.5	1.35	360	255	141	—	—	2	55	—	—	63.5	110
38-195B	—	1-1/8	—	3.0	1.5	1.35	360	255	141	—	—	2	55	—	—	63.5	120
48-212B	—	1-1/8	—	4.0	2.0	1.80	480	340	188	—	—	3	36.5	36.5	—	81.5	145
48-264B	—	1-1/8	—	4.0	2.0	1.80	480	340	188	—	—	3	36.5	36.5	—	81.5	160
58-275B	—	1-1/8	—	5.0	2.5	2.25	600	425	235	—	—	3	54.5	36.5	—	99.5	230
68-318B	—	1-1/8	—	6.0	3.0	2.70	720	510	282	—	—	4	36.5	36	36.5	117.5	255
68-390B	—	1-1/8	—	6.0	3.0	2.70	720	510	282	—	—	4	36.5	36	36.5	117.5	275
16-39B	16-36B	5/8	5/8	1.0	0.5	0.45	120	85	47	4.4	2.2	2	19	—	—	27-1/2	41
16-48B	16-41B	5/8	5/8	1.0	0.5	0.45	120	85	47	4.4	2.2	2	19	—	—	27-1/2	44
16-58B	16-46B	5/8	5/8	1.0	0.5	0.45	120	85	47	4.4	2.2	2	19	—	—	27-1/2	47
26-70B	26-60B	5/8	7/8	2.0	1.0	0.90	240	170	94	7.0	3.5	2	33	—	—	41-1/2	61
26-87B	26-75B	7/8	7/8	2.0	1.0	0.90	240	170	94	7.0	3.5	2	33	—	—	41-1/2	67
26-115B	26-92B	7/8	7/8	2.0	1.0	0.90	240	170	94	8.7	4.4	2	37	—	—	45-1/2	74
36-145B	36-120B	7/8	7/8	3.0	1.5	1.35	360	255	141	13.0	6.4	2	55	—	—	63-1/2	105
36-170B	36-140B	1-1/8	1-1/8	3.0	1.5	1.35	360	255	141	13.0	6.4	2	55	—	—	63-1/2	115
46-192B	46-164B	1-1/8	1-1/8	4.0	2.0	1.80	480	340	188	17.4	8.7	3	36-1/2	36-1/2	—	81-1/2	140
46-230B	46-185B	1-1/8	1-1/8	4.0	2.0	1.80	480	340	188	17.4	8.7	3	36-1/2	36-1/2	—	81-1/2	155
56-245B	56-210B†	1-1/8	1-1/8	5.0	2.5	2.25	600	425	235	18.8†	10.9	3	54-1/2	36-1/2	—	99-1/2	225
66-295B	66-245B†	1-1/8	1-1/8	6.0	3.0	2.70	720	510	282	22.6†	13.0	4	36-1/2	36	36-1/2	117-1/2	250
66-345B	66-280B†	1-1/8	1-1/8	6.0	3.0	2.70	720	510	282	22.6†	13.0	4	36-1/2	36	36-1/2	117-1/2	270
14-42B	14-37B	5/8	5/8	1.0	0.5	0.45	120	85	47	4.4	2.2	2	19	—	—	27-1/2	42
24-84B	24-72B	7/8	7/8	2.0	1.0	0.90	240	170	94	8.7	4.4	2	37	—	—	45-1/2	67
24-105B	24-85B	7/8	7/8	2.0	1.0	0.90	240	170	94	8.7	4.4	2	37	—	—	45-1/2	72
34-130B	34-105B	7/8	7/8	3.0	1.5	1.35	360	255	141	13.0	6.4	2	55	—	—	63-1/2	100
44-170B	44-140B	7/8	1-1/8	4.0	2.0	1.80	360	340	188	17.4	8.7	3	36-1/2	36-1/2	—	81-1/2	135
54-215B	54-180B†	1-1/8	1-1/8	5.0	2.5	2.25	600	425	235	18.8†	10.9	3	54-1/2	36-1/2	—	99-1/2	220
64-255B	64-215B†	1-1/8	1-1/8	6.0	3.0	2.70	720	510	282	22.6†	13.0	4	36-1/2	36	36-1/2	117-1/2	245

† 230/3/60 heaters are standard on these models. Heaters are wired single phase for all other models.  
 460/1/60 motor amps = 1/2 the 230/1/60 value.  
 All models require externally equalized expansion valves.

### Installation Notes:

- (1) Install 12" away from back wall.
- (2) Drain connection on AA and AE units are located in the center, rear of the drain pan.
- (3) For long air throw requirements, specify high throw fan guard.

## AA /AE Models

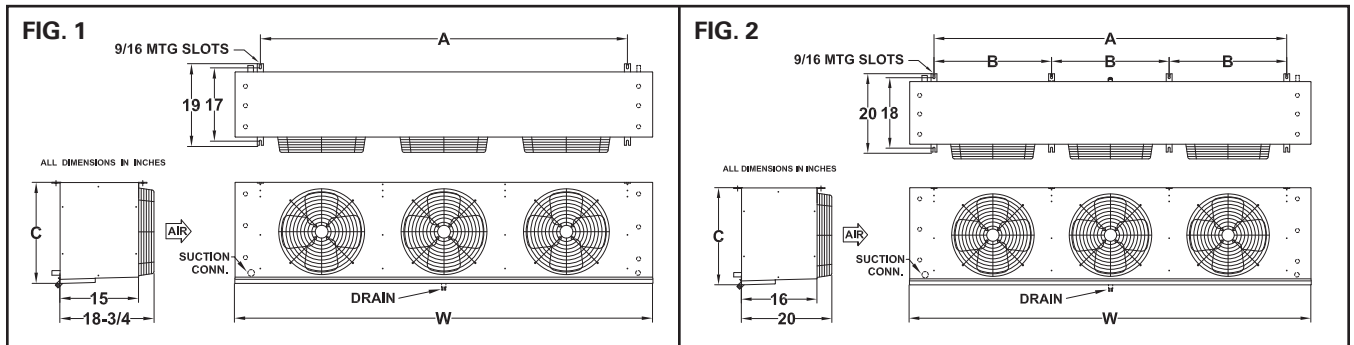


Evaporator

MODEL	CONNECTIONS (In.)			Motor Amps			Total Motor Watts		Heater Amps 230/3	Heater Amps 460/3	Qty of Hangers	DIMENSIONS (in)				Fig.	Ship Wt. (lbs)
	Liquid (ODS)	Suction (ODS)	Drain (MPT)	PSC		ECM	PSC	ECM									
				230/1	460/1	230/1						A	B	C	W		
ITA28-151	1/2	7/8	3/4	1.8	1.0	1.2	282	140	—	—	4	42	—	19	55	1	125
ITA28-210	1/2	7/8	3/4	1.8	1.0	1.2	282	140	—	—	4	42	—	19	55	1	145
ITA38-260	1/2	1 1/8	3/4	2.7	1.5	1.8	423	210	—	—	4	63	—	19	76	1	295
ITA38-320	1/2	1 1/8	3/4	6.4	1.5	1.8	423	210	—	—	4	63	—	19	76	1	330
ITA28-410	7/8	1 1/8	3/4	6.4	2.6	4.2	714	450	—	—	6	63	31.5	25	76	2	370
ITA28-450	7/8	1 3/8	3/4	6.4	2.6	4.2	714	450	—	—	6	63	31.5	25	76	2	390
ITA38-540	7/8	1 3/8	3/4	9.6	3.9	6.3	1071	675	—	—	8	93	31.0	25	106	2	430
ITA38-690	7/8	1 3/8	3/4	9.6	3.9	6.3	1071	675	—	—	8	93	31.0	25	106	2	540
ITA26-145	1/2	7/8	3/4	1.8	1.0	1.2	282	140	—	—	4	42	—	19	55	1	120
ITA26-191	1/2	7/8	3/4	1.8	1.0	1.2	282	140	—	—	4	42	—	19	55	1	140
ITA36-240	1/2	7/8	3/4	2.7	1.5	1.8	423	210	—	—	4	63	—	19	76	1	290
ITA36-305	1/2	1 1/8	3/4	2.7	1.5	1.8	423	210	—	—	4	63	—	19	76	1	320
ITA26-370	7/8	1 1/8	3/4	6.4	2.6	4.2	714	450	—	—	6	63	31.5	25	76	2	360
ITA36-415	7/8	1 1/8	3/4	9.6	3.9	6.3	1071	675	—	—	8	93	31.0	25	106	2	395
ITA36-490	7/8	1 3/8	3/4	9.6	3.9	6.3	1071	675	—	—	8	93	31.0	25	106	2	415
ITA36-620	7/8	1 3/8	3/4	9.6	3.9	6.3	1071	675	—	—	8	93	31.0	25	106	2	520
ITE26-130	1/2	1-1/8	3/4	1.8	1.0	1.2	282	140	11.7	5.9	4	42	—	19	55	1	125
ITE26-150	1/2	1-1/8	3/4	1.8	1.0	1.2	282	140	11.7	5.9	4	42	—	19	55	1	140
ITE36-185	1/2	1-1/8	3/4	2.7	1.5	1.8	423	210	17.0	8.5	4	63	—	19	76	1	295
ITE26-270	1/2	1-3/8	3/4	6.4	2.6	4.2	714	450	17.0	8.5	6	63	31.5	25	76	2	320
ITE26-320	7/8	1-3/8	3/4	6.4	2.6	4.2	714	450	17.0	8.5	6	63	31.5	25	76	2	365
ITE36-385	7/8	1-5/8	3/4	9.6	3.9	6.3	1071	675	24.5	12.2	8	93	31.0	25	106	2	450
ITE36-460	7/8	1-5/8	3/4	9.6	3.9	6.3	1071	675	24.5	12.2	8	93	31.0	25	106	2	490
ITE36-520	7/8	1-5/8	3/4	9.6	3.9	6.3	1071	675	24.5	12.2	8	93	31.0	25	106	2	535
ITE24-105	1/2	1-1/8	3/4	1.8	1.0	1.2	282	140	11.7	5.9	4	42	—	19	55	1	120
ITE24-140	1/2	1-1/8	3/4	1.8	1.0	1.2	282	140	11.7	5.9	4	42	—	19	55	1	135
ITE34-175	1/2	1-1/8	3/4	2.7	1.5	1.8	423	210	17.0	8.5	4	63	—	19	76	1	285
ITE24-230	1/2	1-3/8	3/4	6.4	2.6	4.2	714	450	17.0	8.5	6	63	31.5	25	76	2	315
ITE24-325	7/8	1-3/8	3/4	6.4	2.6	4.2	714	450	17.0	8.5	6	63	31.5	25	76	2	350
ITE34-390	7/8	1-5/8	3/4	9.6	3.9	6.3	1071	675	24.5	12.2	8	93	31.0	25	106	2	435
ITE34-510	7/8	1-5/8	3/4	9.6	3.9	6.3	1071	675	24.5	12.2	8	93	31.0	25	106	2	530

All models require externally equalized expansion valves.

IT\* Models

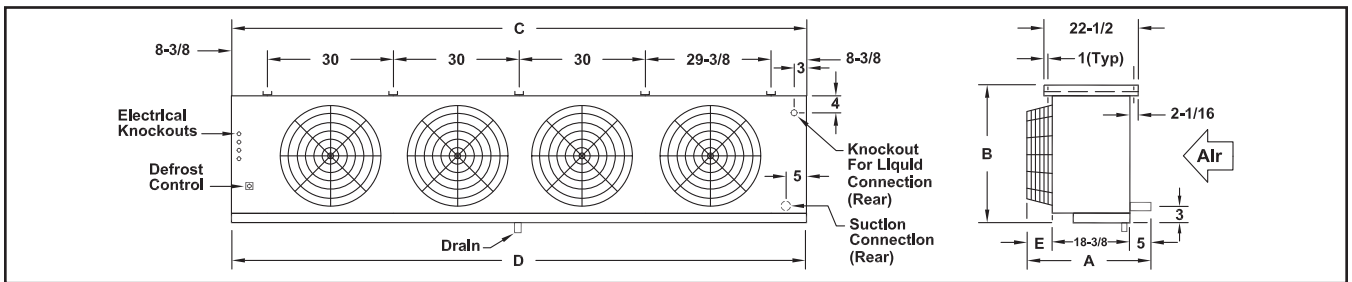


**Evaporator**

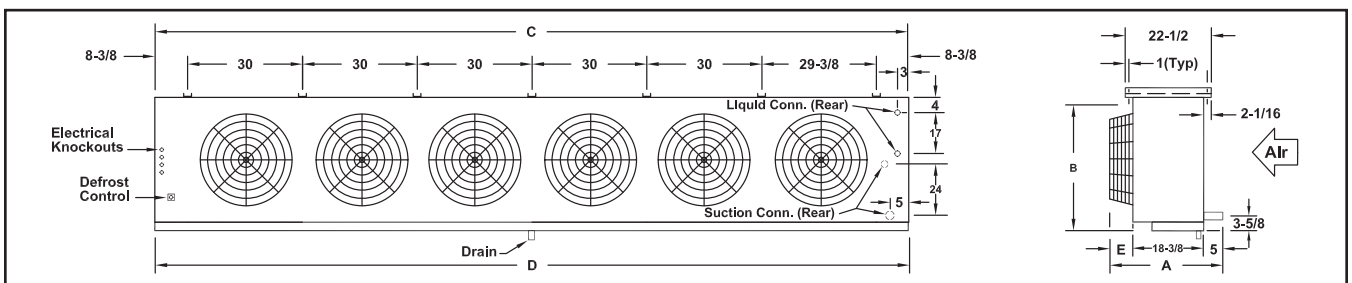
MODEL	Connections (In.)†			Total Motor Amps			Total Motor Watts		Heater Amps	Heater Amps	Qty of Hang-ers	UNIT DIMENSIONS (Inches)				Approx Ship WT (LBS)
	Liq. (ODS)	Suct. (ODS)	Drain (MPT)	PSC		ECM	PSC	ECM	230/3	460/3		A	B	C	D	
				230V	460V	230/1										
UAH1-182	5/8	7/8	3/4	3.2	1.3	2.1	357	225	—	—	2	27 3/4	25 3/4	46 1/8	46 1/2	210
UAH1-232	5/8	7/8	3/4	3.2	1.3	2.1	357	225	—	—	2	27 3/4	25 3/4	46 1/8	46 1/2	230
UAH2-300	5/8	1 1/8	3/4	6.4	2.6	4.2	714	450	—	—	3	27 3/4	26	76 1/8	76 1/2	370
UAH2-365	5/8	1 1/8	3/4	6.4	2.6	4.2	714	450	—	—	3	27 3/4	26	76 1/8	76 1/2	410
UAH2-433	5/8	1 1/8	3/4	6.4	2.6	4.2	714	450	—	—	3	29 1/8	31 3/4	76 1/8	76 1/2	435
UAH2-490	5/8	1 1/8	3/4	6.4	2.6	4.2	714	450	—	—	3	29 1/8	31 3/4	76 1/8	76 1/2	458
UAH3-530	7/8	1 3/8	3/4	5.5†	2.9†	3.6†	1071	675	—	—	4	29 1/8	32	106 1/8	106 1/2	550
UAH3-648	7/8	1 3/8	3/4	5.5†	2.9†	3.6†	1071	675	—	—	4	29 1/8	32	106 1/8	106 1/2	600
UAH3-736	7/8	1 3/8	3/4	5.5†	2.9†	3.6†	1071	675	—	—	4	29 1/8	32	106 1/8	106 1/2	635
UAH4-866	7/8	1 3/8	1 1/4	8.5†	4.5†	4.8†	1428	900	—	—	5	29 1/8	32 1/4	136 1/8	136 1/2	690
UAH4-980	7/8	1 3/8	1 1/4	8.5†	4.5†	4.8†	1428	900	—	—	5	29 1/8	32 1/4	136 1/8	136 1/2	746
UAH4-1100	7/8	1 3/8	1 1/4	8.5†	4.5†	4.8†	1428	900	—	—	5	29 1/8	32 1/4	136 1/8	136 1/2	785
UAH4-1452	7/8	1 5/8	1 1/4	11.1†	5.6†	12.0†	3400	1980	—	—	5	29 1/8	50 1/4	136 1/8	136 1/2	905
UAH4-1821	7/8	2 1/8	1 1/4	11.1†	5.6†	12.0†	3400	1980	—	—	5	29 1/8	50 1/4	136 1/8	136 1/2	930
UAH5-2275	1 5/8	2 5/8	1 1/4	14.6†	7.3†	15.0†	4250	2475	—	—	6	29 1/8	50 1/2	166 1/8	166 1/2	1165
UAH6-2730	1 5/8	2 5/8	1 1/4	17.7†	7.3†	18.0†	5100	2970	—	—	7	29 1/8	50 3/4	196 1/8	196 1/2	1395
U*M1-164	1/2	7/8	3/4	3.2	1.3	2.1	357	225	14.6	9.5	2	27 3/4	25 3/4	46 1/8	46 1/2	200
U*M1-209	5/8	7/8	3/4	3.2	1.3	2.1	357	225	14.6	9.5	2	27 3/4	25 3/4	46 1/8	46 1/2	220
U*M2-270	5/8	1 1/8	3/4	6.4	2.6	4.2	714	450	26.0	17.0	3	27 3/4	26	76 1/8	76 1/2	260
U*M2-329	5/8	1 1/8	3/4	6.4	2.6	4.2	714	450	26.0	17.0	3	27 3/4	26	76 1/8	76 1/2	400
U*M2-390	5/8	1 1/8	3/4	6.4	2.6	4.2	714	450	26.0	17.0	3	29 1/8	31 3/4	76 1/8	76 1/2	425
U*M2-441	5/8	1 1/8	3/4	6.4	2.6	4.2	714	450	26.0	17.0	3	29 1/8	31 3/4	76 1/8	76 1/2	446
U*M3-583	5/8	1 3/8	3/4	5.5†	2.9†	3.6†	1071	675	37.4	24.5	4	29 1/8	32	106 1/8	106 1/2	585
U*M3-662	7/8	1 3/8	3/4	5.5†	2.9†	3.6†	1071	675	37.4	24.5	4	29 1/8	32	106 1/8	106 1/2	620
U*M4-780	7/8	1 3/8	1 1/4	8.5†	4.5†	4.8†	1428	900	47.8	24.3	5	29 1/8	32 1/4	136 1/8	136 1/2	675
U*M4-882	7/8	1 3/8	1 1/4	8.5†	4.5†	4.8†	1428	900	47.8	24.3	5	29 1/8	32 1/4	136 1/8	136 1/2	726
U*M4-1100	7/8	1 5/8	1 1/4	11.1†	5.6†	12.0†	3400	1980	71.3	33.7	5	29 1/8	50 1/4	136 1/8	136 1/2	830
U*M4-1320	1 1/8	1 5/8	1 1/4	11.1†	5.6†	12.0†	3400	1980	71.3	33.7	5	29 1/8	50 1/4	136 1/8	136 1/2	885
U*M4-1656	1 1/8	2 1/8	1 1/4	11.1†	5.6†	12.0†	3400	1980	71.3	33.7	5	29 1/8	50 1/4	136 1/8	136 1/2	910
U*M5-2065	1 5/8	2 5/8	1 1/4	14.6†	7.3†	15.0†	4250	2475	79.8	39.9	6	29 1/8	50 1/2	166 1/8	166 1/2	1140
U*M6-2480	1 5/8	2 5/8	1 1/4	17.7†	9.0†	18.0†	5100	2970	95.7	47.9	7	29 1/8	50 3/4	196 1/8	196 1/2	1365

Replace\* with A for air defrost (UAM) or E for electric defrost (UEM). Heater amps apply to electric defrost models only.  
 † Single phase motors delta wired for 3 phase power connection. Inherent 3 phase motors are available at extra cost.  
 ‡ Connection sizes and quantity are subject to change based upon actual operating conditions. Contact Application Engineering.

**UAH/U\*M - 1 thru 4 Fan Models**



**UAH/U\*M - 5 and 6 Fan Models**



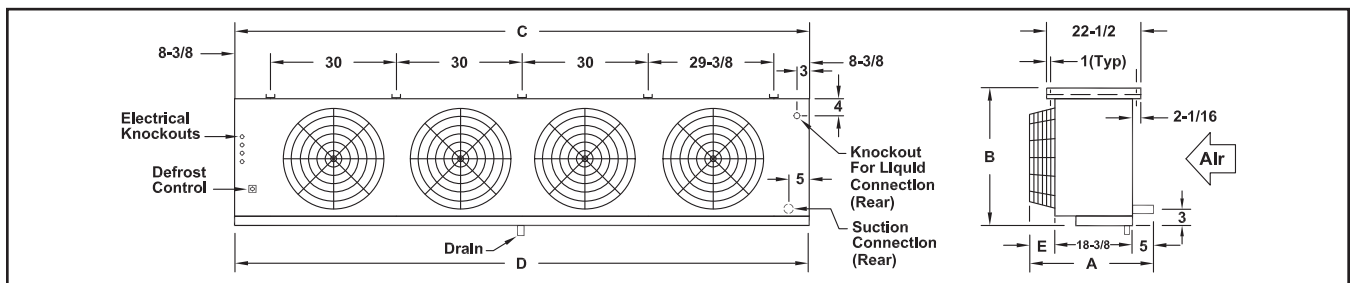
Evaporator

MODEL	Connections (In.)†			Total Motor Amps			Total Motor Amps		Heater Amps		Num. of Hangers	Dimensions Inches				Ship Wt. (lbs)
	LIQUID (ODS)	SUCTION (ODS)	DRAIN (MPT)	PSC 230/1	ECM 230/1	PSC 460/1	PSC	ECM	230/3	460/3		A	B	C	D	
UEL1-125	1/2	1-1/8	3/4	4.2	4.6	2.1	717	580	14.6	9.5	2	27-3/8	26-7/8	46-1/8	46-1/2	180
UEL1-152	1/2	1-1/8	3/4	4.2	4.6	2.1	717	580	14.6	9.5	2	27-3/8	26-7/8	46-1/8	46-1/2	200
UEL1-193	5/8	1-1/8	3/4	4.2	4.6	2.1	717	580	14.6	9.5	2	27-3/8	26-7/8	46-1/8	46-1/2	220
UEL2-240	7/8	1-3/8	3/4	8.4	9.2	4.2	1434	1160	26.0	17.0	3	27-3/8	27-3/8	76-1/8	76-1/2	370
UEL2-304	7/8	1-3/8	3/4	8.4	9.2	4.2	1434	1160	26.0	17.0	3	27-3/8	27-3/8	76-1/8	76-1/2	400
UEL2-361	7/8	1-5/8	3/4	8.4	10.4	4.2	1700	990	26.0	17.0	3	29-1/8	33-3/8	76-1/8	76-1/2	425
UEL2-408	7/8	1-5/8	3/4	8.4	10.4	4.2	1700	990	26.0	17.0	3	29-1/8	33-3/8	76-1/8	76-1/2	446
UEL3-445	7/8	2-1/8	3/4	7.3†	9.0†	3.6†	2550	1485	37.4	24.5	4	29-1/8	33-7/8	106-1/8	106-1/2	525
UEL3-540	7/8	2-1/8	3/4	7.3†	9.0†	3.6†	2550	1485	37.4	24.5	4	29-1/8	33-7/8	106-1/8	106-1/2	585
UEL3-613	7/8	2-1/8	3/4	7.3†	9.0†	3.6†	2550	1485	37.4	24.5	4	29-1/8	33-7/8	106-1/8	106-1/2	620
UEL3-660	7/8	2-1/8	3/4	7.3†	9.0†	3.6†	2550	1485	37.4	24.5	4	29-1/8	33-7/8	106-1/8	106-1/2	645
UEL4-722	1-3/8	2-1/8	1-1/4	11.1†	12.0†	5.6†	3400	1980	47.8	26.0	5	29-1/8	34-1/4	136-1/8	136-1/2	675
UEL4-817	7/8	2-1/8	1-1/4	11.1†	12.0†	5.6†	3400	1980	47.8	26.0	5	29-1/8	34-1/4	136-1/8	136-1/2	726
UEL4-950	(2) 7/8	(2) 2-1/8	1-1/4	11.1†	12.0†	5.6†	3400	1980	71.3	33.7	5	29-1/8	52-1/4	136-1/8	136-1/2	850
UEL4-1100	(2) 7/8	(2) 2-1/8	1-1/4	11.1†	12.0†	5.6†	3400	1980	71.3	33.7	5	29-1/8	52-1/4	136-1/8	136-1/2	885
UEL4-1260	(2) 7/8	(2) 2-1/8	1-1/4	11.1†	12.0†	5.6†	3400	1980	71.3	33.7	5	29-1/8	52-1/4	136-1/8	136-1/2	895
UEL4-1380	(2) 7/8	(2) 2-1/8	1-1/4	11.1†	12.0†	5.6†	3400	1980	71.3	33.7	5	29-1/8	52-1/4	136-1/8	136-1/2	910
UEL5-1575	(2) 1-1/8	(2) 2-1/8	1-1/4	14.6†	15.0†	7.3†	4250	2475	79.8	39.9	6	29-1/8	52-3/4	166-1/8	166-1/2	1120
UEL5-1725	(2) 1-1/8	(2) 2-1/8	1-1/4	14.6†	15.0†	7.3†	4250	2475	79.8	39.9	6	29-1/8	52-3/4	166-1/8	166-1/2	1140
UEL6-1890	(2) 1-3/8	(2) 2-5/8	1-1/4	17.7†	18.0†	9.0†	5100	2970	95.7	47.9	7	29-1/8	53-1/4	196-1/8	196-1/2	1345
UEL6-2070	(2) 1-3/8	(2) 2-5/8	1-1/4	17.7†	18.0†	9.0†	5100	2970	95.7	47.9	7	29-1/8	53-1/4	196-1/8	196-1/2	1365
UEU1-118	1/2	1-1/8	3/4	4.2	4.6	2.1	717	580	14.6	9.5	2	27-3/8	26-7/8	46-1/8	46-1/2	190
UEU2-236	7/8	1-3/8	3/4	8.4	9.2	4.2	1434	1160	26.0	17.0	3	27-3/8	27-3/8	76-1/8	76-1/2	370
UEU2-355	7/8	1-5/8	3/4	8.4	10.4	4.2	1700	990	26.0	17.0	3	29-1/8	33-3/8	76-1/8	76-1/2	440
UEU3-474	7/8	1-5/8	3/4	7.3†	9.0†	7.3	2550	1485	37.4	24.5	4	29-1/8	33-7/8	106-1/8	106-1/2	570
UEU4-711	7/8	2-1/8	1-1/4	11.1†	12.0†	3.6†	3400	1980	47.8	26.0	5	29-1/8	34-1/4	136-1/8	136-1/2	665
UEU4-851	(2) 7/8	(2) 2-1/8	1-1/4	11.1†	12.0†	5.6†	3400	1980	71.3	33.7	5	29-1/8	52-1/4	136-1/8	136-1/2	875
UEU4-1080	(2) 7/8	(2) 2-1/8	1-1/4	11.1†	12.0†	5.6†	3400	1980	71.3	33.7	5	29-1/8	52-1/4	136-1/8	136-1/2	900
UEU5-1350	(2) 7/8	(2) 2-1/8	1-1/4	14.6†	15.0†	7.3†	4250	2475	79.8	39.9	6	29-1/8	52-3/4	166-1/8	166-1/2	1125
UEU6-1620	(2) 1-1/8	(2) 2-5/8	1-1/4	17.7†	18.0†	9.0†	5100	2970	95.7	47.9	7	29-1/8	53-1/4	196-1/8	196-1/2	1350

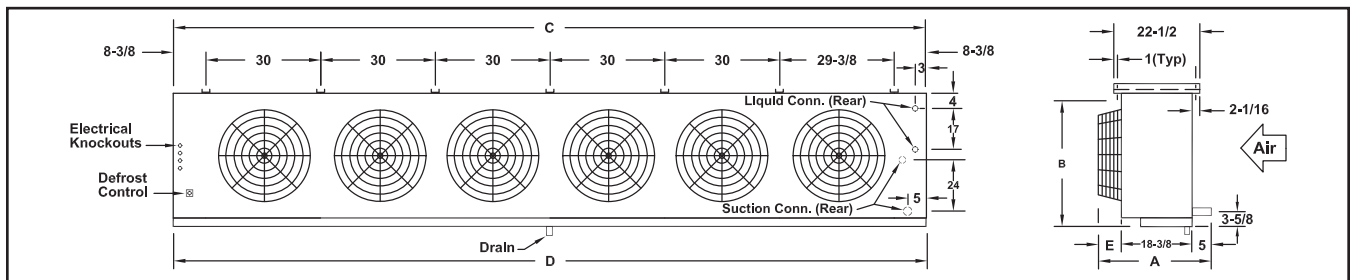
† Single phase motors delta wired for 3 phase power connection. Inherent 3 phase motors are available at extra cost.

‡ Connection sizes and quantity are subject to change based upon actual operating conditions. Contact Application Engineering.

UEL/UEU - 1 thru 4 Fan Models



UEL/UEU - 5 and 6 Fan Models



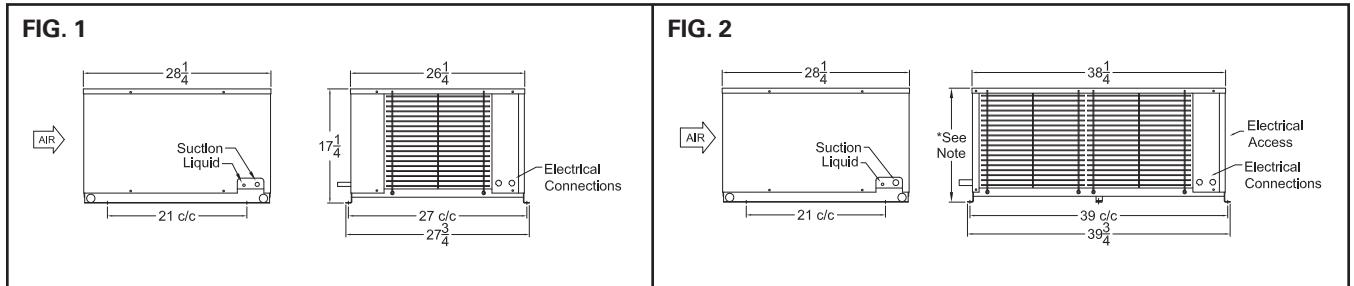
Condensing Unit Data - MiniCon

COMP TYPE	MODEL NUMBER	COMP. MODEL NUMBER	AMPS @ 230/1/60				MCA**	MOPD**	AMPS @ 208-230/3/60				MCA**	MOPD**	FIG.	CONNECT †		NET WT. (lbs)	
			COMP.		COND. FLA	TOTAL UNIT			COMP.		COND. FLA	TOTAL UNIT				Liq.	Suct.		
			RLA	LRA					RLA	LRA									
HERMETIC	RIH051H22	ART82C1	5.9	30.0	0.5	7.4	15	15.0	—	—	—	—	—	—	1	3/8	5/8	175	
	RIH075H22	RSE-0075	7.1	35.5	0.5	8.6	15	17.5	—	—	—	—	—	—	1	3/8	5/8	175	
	RIH100H22	RS70C1	7.0	34.2	0.5	8.5	15	17.5	4.7	31.0	0.5	6.2	15	15.0	1	3/8	5/8	180	
	RIH151H22	CR18KQ	9.0	41.0	1.0	11.0	15	25.0	6.1	49.0	1.0	8.1	15	15.0	2	3/8	7/8	240	
	RIH201H22	CR24KQ	13.6	70.5	1.0	15.6	20	30.0	7.5	51.0	1.0	9.5	15	15.0	2	3/8	7/8	260	
	RIH251H22	CR33KQ	16.0	75.0	1.0	18.0	23	40.0	10.6	69.0	1.0	12.6	17	17.0	2	1/2	7/8	345	
	RIH301H22	CR41KQ	19.4	109.6	3.2	23.6	29	45.0	13.1	80.0	3.2	17.3	21	30.0	3	1/2	7/8	380	
	RIH401H22	CR53KQ	28.9	140.0	3.2	33.1	41	70.0	18.2	107.0	3.2	22.4	27	40.0	3	1/2	7/8	410	
	RIH500H22	RN-0500	34.3	142.0	3.2	38.5	42	80.0	21.4	130.0	3.2	25.6	31	50.0	3	1/2	7/8	425	
	RIH050M44	RS43C1E	5.4	24.1	0.5	6.9	15	15.0	—	—	—	—	—	—	1	3/8	5/8	170	
	RIH075M44	RS70C1E	7.0	34.2	0.5	8.5	15	17.5	4.7	31.0	0.5	6.2	15	15.0	1	3/8	5/8	175	
	RIH101M44	RS97C1E	11.0	51.0	1.0	13.0	17	25.0	7.0	35.0	1.0	9.0	15	17.5	2	3/8	5/8	180	
	RIH150M44	CS12K6E	10.9	56.0	1.0	12.9	17	25.0	7.5	51.0	1.0	9.5	15	17.5	2	3/8	7/8	240	
	RIH201M44	CS18K6E	16.0	82.0	1.0	18.0	24	35.0	8.8	65.0	1.0	10.8	17	25.0	2	3/8	7/8	270	
	RIH300M44	CS20K6E	18.6	96.0	3.2	22.8	27	40.0	11.4	75.0	3.2	15.6	19	25.0	3	1/2	1 1/8	380	
	RIH400M44	CS27K6E	23.9	121.0	3.2	28.1	35	50.0	13.4	105.0	3.2	17.6	24	35.0	3	1/2	1 1/8	410	
	RIH500M44	CS33K6E	30.7	125.0	3.2	34.9	43	70.0	18.7	102.0	3.2	22.9	31	50.0	3	1/2	1 1/8	425	
	SEMI-HERMETIC	RIS050H22	HAG-0050	4.0	22.0	0.5	5.5	15	15.0	2.4	13.0	0.5	3.9	15	15.0	1	3/8	5/8	210
		RIS075H22	KAN-0075	6.1	36.0	0.5	7.6	15	15.0	3.5	19.9	0.5	5.0	15	15.0	1	3/8	5/8	215
RIS100H22		KAR-0100	7.4	40.0	0.5	8.9	15	17.5	4.3	27.0	0.5	5.8	15	15.0	1	3/8	5/8	220	
RIS150H22		KAG-0150	9.6	55.0	1.0	11.6	15	20.0	5.5	35.5	1.0	7.5	15	15.0	2	3/8	7/8	290	
RIS200H22		KAK-0200	10.6	55.0	1.0	12.6	17	25.0	6.8	50.0	1.0	8.8	15	17.5	2	3/8	7/8	320	
RIS300H22		ERF-0310	17.4	86.0	3.2	21.6	20	25.0	11.7	82.0	3.2	15.9	20	30.0	3	1/2	1 1/8	470	
RIS400H22		NRB-040E	—	—	—	—	—	—	21.9	141.0	3.2	26.1	32	50.0	3	1/2	1 1/8	490	
RIS400M22		3RA-0311	17.1	82.0	3.2	21.3	27	40.0	13.9	82.0	3.2	18.1	22	35.0	3	1/2	1 1/8	490	
RIS500H22		NRA-0500	—	—	—	—	—	—	19.2	141.0	3.2	23.4	29	45.0	3	1/2	1 1/8	490	
RIS500M22		NRM-0500	—	—	—	—	—	—	22.0	141.0	3.2	26.2	35	50.0	3	1/2	1 1/8	490	
RIS050M44		HAI-005E	3.7	22.0	0.5	5.2	15	15.0	2.2	13.0	0.5	3.7	15	15.0	1	3/8	5/8	210	
RIS100M44		KAR-010E	7.1	40.0	0.5	8.6	15	17.5	4.3	27.0	0.5	5.8	15	15.0	1	3/8	5/8	220	
RIS200M44		KAK-020E	10.1	55.0	1.0	12.1	17	25.0	6.5	50.0	1.0	8.5	15	17.5	2	3/8	7/8	320	
RIS300M44		ERF-031E	—	—	—	—	—	—	12.4	82.0	3.2	16.6	20	30.0	3	1/2	1 1/8	470	
RIS400M44		NRB-040E	—	—	—	—	—	—	21.9	141.0	3.2	26.1	32	50.0	3	1/2	1 1/8	490	
SCROLL		RIO200M44	ZS15K4E	13.6	61.0	1.0	15.6	21	30.0	9.3	55.0	1.0	11.3	15	20.0	2	3/8	7/8	365
	RIO250M44	ZS19K4E	16.4	73.0	1.0	18.4	24	35.0	9.6	63.0	1.0	11.6	16	20.0	2	1/2	1 1/8	375	
	RIO300M44	ZS21K4E	16.4	88.0	3.2	20.6	25	40.0	11.1	77.0	3.2	15.3	19	25.0	3	1/2	1 1/8	375	
	RIO301M44	ZS26K4E	20.7	109.0	3.2	24.9	31	50.0	13.6	88.0	3.2	17.8	22	30.0	3	1/2	1 1/8	385	
	RIO400M44	ZS30K4E	26.8	129.0	3.2	31.0	38	60.0	15.0	99.0	3.2	19.2	23	35.0	3	1/2	1 1/8	400	
	RIO600M44	ZS30K4E	31.8	169.0	3.2	36.0	44	75.0	21.4	123.0	3.2	25.6	31	50.0	3	1/2	1 1/8	425	
	RIO650M44	ZS45K4E	—	—	—	—	—	—	23.9	156.0	3.2	28.1	34	55.0	3	1/2	1 1/8	440	

† Refrigerant connection sizes are in inches.

\*\* MCA = Minimum Circuit Ampacity - No evap fan load. Contact Applications engineering if used with electric defrost coils.

\*\* MOPD = Maximum overcurrent protection device. No evap fan load included. Contact applications engineering if used with electric defrost coils.





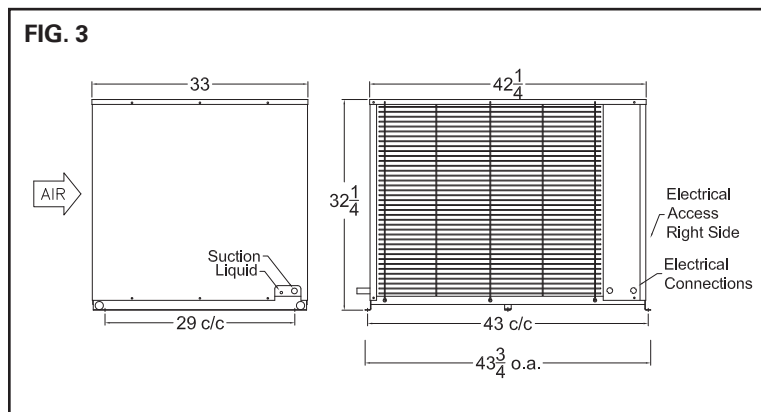
## Condensing Unit Data - MiniCon

COMP TYPE	MODEL NUMBER	COMP. MODEL NUMBER	AMPS @ 208/230/1/60							AMPS @ 208-230/3/60						FIG.	CONN.		Approx. Net Wt.
			COMP.		COND FLA	TOTAL UNIT	MCA**	MOPD	COMP.		COND FLA	TOTAL UNIT	MCA**	MOPD	LIQ		SUCT		
			RLA	LRA					RLA	LRA									
HERM	RIH100L44	RS97C1E	11.0	51.0	0.5	12.5	19.0	30	7.0	35.0	0.5	8.5	15.0	20	1	3/8	5/8	180	
	RIH165L44	CF06K6E	11.4	59.2	1.0	13.4	22.0	35	7.0	52.0	0.5	8.5	16.0	20	1	3/8	7/8	240	
	RIH215L44	CF09K6E	16.7	87.0	1.0	18.7	28.0	44	10.2	72.2	1.0	12.2	20.0	29	2	3/8	7/8	270	
	RIH315L44	CF12K6E	20.5	105.0	3.2	24.7	38.0	45	12.3	85.0	3.2	16.5	28.0	35	3	1/2	1-1/8	380	
SEMI-HERMETIC	RIS050L44	KAN-005E	3.5	24.0	0.5	5.0	9.0	15	2.2	13.2	0.5	3.7	8.0	15	1	3/8	5/8	210	
	RIS075L44	KAM-007E	5.6	36.0	0.5	7.1	12.0	20	3.2	19.9	0.5	4.7	9.0	15	1	3/8	5/8	215	
	RIS100L44	KAJ-010E	6.9	40.0	0.5	8.4	14.0	20	4.5	27.0	0.5	6.0	11.0	15	1	3/8	5/8	220	
	RIS150L44	KAL-015E	9.9	55.0	1.0	11.9	19.0	29	6.6	50.0	1.0	8.6	15.0	20	2	3/8	7/8	290	
	RIS200L44	EAV-021E	14.7	102.0	1.0	16.7	25.0	40	7.4	50.0	1.0	9.4	16.0	20	2	3/8	7/8	320	
	RIS250L44	3AB-031E	14.7	86.0	1.0	* 16.7	29.0	40	10.0	82.0	1.0	12.0	23.0	30	2	1/2	7/8	470	
	RIS300L44	LAH-032E	16.7	105.0	3.2	* 20.9	34.0	60	12.8	112.0	3.2	17.0	29.0	40	3	1/2	1-1/8	470	
	RIS050L22	KAN-0050	3.6	24.0	0.5	5.1	9.0	15	—	—	—	—	—	—	1	3/8	5/8	210	
	RIS075L22	KAM-0075	5.6	36.0	0.5	7.1	12.0	20	3.2	19.9	0.5	4.7	9.0	15	1	3/8	5/8	215	
	RIS100L22	KAJ-0100	6.9	40.0	0.5	8.4	14.0	25	4.6	27.0	0.5	6.1	11.0	15	1	3/8	5/8	220	
	RIS200L22	KAK-0200	9.1	55.0	1.0	11.1	18.0	30	6.8	50.0	1.0	8.8	15.0	25	2	3/8	7/8	290	
	RIS201L22	EAD-0200	8.5	58.0	1.0	* 10.5	17.0	25	6.4	46.0	1.0	8.4	14.0	25	2	3/8	7/8	320	
	RIS202L22	EAV-0210	14.7	102.0	1.0	16.7	25.0	40	7.4	50.0	1.0	9.4	16.0	25	2	3/8	7/8	320	
	RIS300L22	LAH-0310	16.6	93.0	3.2	20.8	33.0	50	8.7	82.0	3.2	12.9	24.0	40	3	1/2	1-1/8	470	
DISCU	RID300L44	2DF-030E	—	—	—	—	—	—	16.0	102.0	3.2	20.2	33.0	45	3	1/2	1-1/8	500	
	RID400L44	2DL-040E	—	—	—	—	—	—	26.3	161.0	3.2	30.5	54.0	75	3	1/2	1-1/8	540	
	RID500L44	2DA-060E	—	—	—	—	—	—	28.8	161.0	3.2	33.0	57.0	80	3	1/2	1-1/8	550	
	RID300L22	2DF-0300	—	—	—	—	—	—	15.9	102.0	3.2	20.1	33.0	45	3	1/2	1-1/8	500	
	RID400L22	2DL-040E	—	—	—	—	—	—	24.1	161.0	3.2	28.3	51.0	75	3	1/2	1-1/8	540	
	RID500L22	2DA-0600	—	—	—	—	—	—	25.4	161.0	3.2	29.6	52.0	80	3	1/2	1-1/8	550	
SCROLL	RIO200L44	ZF06K4E	13.6	61.0	1.0	15.6	27.0	40	9.3	55.0	1.0	11.3	22.0	30	2	3/8	7/8	365	
	RIO250L44	ZF08K4E	16.4	73.0	1.0	18.4	31.0	45	9.6	63.0	1.0	11.6	22.0	30	2	3/8	7/8	380	
	RIO300L44	ZF09K4E	14.3	88.0	3.2	18.5	31.0	45	9.6	77.0	3.2	13.8	25.0	35	3	1/2	1-1/8	380	
	RIO301L44	ZF11K4E	20.7	109.0	3.2	24.9	39.0	50	12.1	88.0	3.2	16.3	28.0	40	3	1/2	1-1/8	390	
	RIO400L44	ZF13K4E	25.0	129.0	3.2	29.2	48.0	75	13.2	99.0	3.2	17.4	33.0	45	3	1/2	1-1/8	405	
RIO500L44	ZF15K4E	27.5	169.0	3.2	31.7	55.0	90	18.9	123.0	3.2	23.1	44.0	60	3	1/2	1-1/8	420		

\* Note: These models are available as 2301/1 ONLY. 208V/1 applications may require a transformer. Contact Applications engineering.

\*\* MCA = Minimum Circuit Ampacity - includes maximum evap fan load allowance.

\*\* MOPD = Maximum overcurrent protection device



## Condensing Unit Data - D-Series

Model Number	Comp. Model Number	AMPS @ 230/3/60						AMPS @ 460/3/60					FIG.	Connect. †		Net Wt. (lbs.)	
		Comp.		Cond. FLA	Total Unit	MCA*	MOPD	Comp.		Cond. FLA	Total Unit	MCA*		MOPD	Liq.		Suct.
		RLA	LRA					RLA	LRA								
<b>"D" SERIES, DISCUS, R-22 Medium Temp</b>																	
DID5H22	2DD-050E	22.3	120	4.2	27.5	34.0	50	10.5	60	2.1	13.1	17.0	25	1	5/8	1-1/8	850
DID7H22	2DA-075E	32.0	169	6.4	39.4	48.0	75	14.1	85	4.2	18.8	23.0	35	2	5/8	1-3/8	1100
DID8H22	3DA-075E	41.0	215	6.4	48.4	59.0	90	20.0	106	4.2	24.7	31.0	50	2	5/8	1-3/8	1130
DID10H22	3DB-100E	43.6	215	8.4	53.0	64.0	100	20.0	106	4.2	24.7	31.0	50	2	7/8	1-5/8	1330
DID12H22	3DS-120E	48.2	275	8.4	57.6	70.0	110	23.6	138	4.2	28.3	35.0	50	2	7/8	1-5/8	1340

<b>"D" SERIES, DISCUS, R-22 Low Temp</b>																	
DID3L22	2DF-030E	16.8	102	3.2	21.0	34.0	50	8.1	52	2.1	10.7	17.0	20	1	3/8	1-1/8	710
DID4L22	2DL-040E	26.3	161	3.2	30.5	54.0	75	10.2	60	2.1	12.8	20.0	25	1	3/8	1-1/8	740
DID5L22	2DA-060E	28.8	161	3.2	33.0	57.0	80	10.2	60	2.1	12.8	24.0	30	1	3/8	1-3/8	805
DID6L22	3AD-060E	30.3	150	4.2	35.5	59.0	80	13.7	77	2.1	16.3	28.0	40	1	3/8	1-3/8	840
DID8L22	3DB-075E	31.5	161	6.4	38.9	63.0	90	16.1	83	4.2	20.8	33.0	45	2	5/8	1-3/8	1130
DID9L22	3DF-090E	39.0	215	6.4	46.4	73.0	110	16.9	106	4.2	21.6	34.0	50	2	5/8	1-5/8	1275
DID10L22	3DS-100E	42.0	215	6.4	76.0	110.0	110	18.6	106	4.2	23.3	36.0	50	2	5/8	1-5/8	1275
DID15L22	4DL-150E	52.6	278	8.4	62.0	92.0	125	26.3	139	4.2	31.0	46.0	70	2	5/8	1-5/8	1310

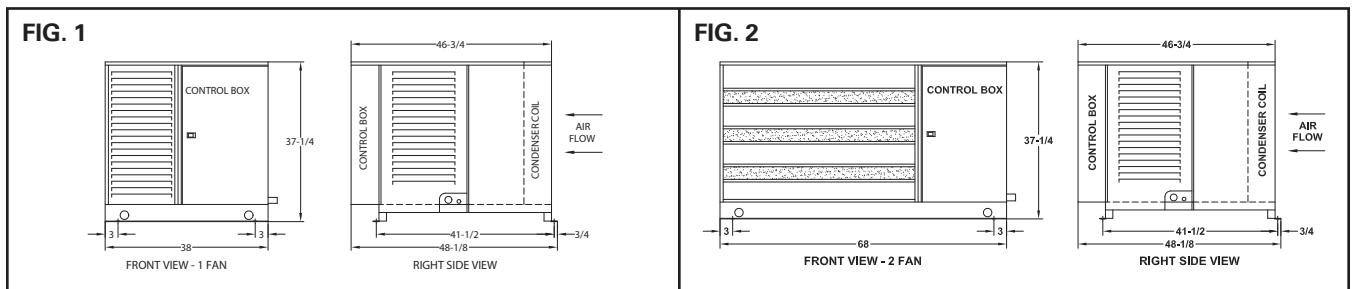
<b>"D" SERIES, DISCUS, R-404A Medium Temp</b>																	
DID5M44	2DD-050E	22.3	120	4.2	27.5	34.0	50	10.5	60	2.1	13.1	17.0	25	1	5/8	1-1/8	850
DID6M44	2DL-075E	31.6	169	6.4	39.4	47.0	75	13.8	85	4.2	18.5	23.0	35	2	5/8	1-1/8	1075
DID7M44	2DA-075E	32.0	169	6.4	39.4	48.0	75	14.1	85	4.2	18.8	23.0	35	2	5/8	1-3/8	1100
DID8M44	3DA-075E	41.0	215	6.4	48.8	59.0	90	20.0	106	4.2	24.7	31.0	50	2	5/8	1-3/8	1130
DID10M44	3DB-100E	43.6	215	8.4	53.0	64.0	100	20.0	106	4.2	24.7	31.0	50	2	7/8	1-5/8	1330
DID12M44	3DF-120E	48.2	275	8.4	57.6	70.0	110	23.6	138	4.2	28.3	35.0	50	2	7/8	1-5/8	1330

<b>"D" SERIES, DISCUS, R-404A Low Temp</b>																	
DID3L44	2DF-030E	16.8	102	3.2	21.0	34.0	50	8.1	52	2.1	10.7	17.0	20	1	1/2	1-1/8	710
DID4L44	2DL-040E	26.3	161	3.2	30.5	54.0	75	10.2	60	2.1	12.8	20.0	25	1	1/2	1-1/8	760
DID5L44	2DA-060E	28.8	161	3.2	33.0	57.0	80	10.2	60	2.1	12.8	24.0	30	1	1/2	1-3/8	805
DID6L44	3DA-060E	30.3	150	3.2	34.5	59.0	80	13.7	77	2.1	16.3	28.0	40	1	1/2	1-3/8	870
DID8L44	3DB-075E	31.5	161	6.4	38.9	63.0	80	16.1	83	4.2	20.8	33.0	45	2	5/8	1-3/8	1130
DID9L44	3DF-090E	39.0	215	6.4	46.4	73.0	110	16.9	106	4.2	21.6	34.0	50	2	5/8	1-5/8	1275
DID10L44	3DS-100E	42.0	215	6.4	49.4	76.0	110	18.6	106	4.2	32.3	36.0	50	2	5/8	1-5/8	1275
DID12L44	4DA-101E	45.6	220	6.4	53.0	81.0	125	22.8	110	4.2	27.5	42.0	60	2	5/8	1-5/8	1290
DID15L44	4DL-150E	52.6	278	8.4	62.0	92.0	125	26.3	139	4.2	31.0	46.0	70	2	5/8	1-5/8	1310

<b>"D" SERIES, SCROLL, R-404A Medium Temp</b>																	
DIO7M44	ZS45K4E	23.9	156	6.4	31.3	38.0	60	9.3	70	4.2	14.0	17.0	25	2	5/8	1-1/8	870
DIO8M44	ZS56K4E	30.9	189	6.4	38.3	47.0	75	16.2	94	4.2	20.9	26.0	40	2	5/8	1-5/8	1010
DIO10M44	ZS75K4E	44.9	278	8.4	54.3	64.0	100	21.7	127	4.2	26.4	33.0	50	2	5/8	1-3/8	1170
DIO13M44	ZS92K4E	52.9	350	8.4	62.3	72.0	110	26.5	175	4.2	31.2	39.0	60	2	7/8	1-5/8	1175

<b>"D" SERIES, SCROLL, R-404A Low Temp</b>																	
DIO8L44	ZF24K4E	23.9	189	6.4	31.3	63.0	90	11.8	94	4.2	16.5	33.0	45	5	1/2	1-3/8	985
DIO10L44	ZF33K4E	31.0	278	6.4	38.4	80.0	110	15.1	127	4.2	19.8	40.0	60	5	5/8	1-5/8	1105
DIO13L44	ZF40K4E	52.9	350	6.4	60.3	90.0	125	26.5	212	4.2	31.2	42.0	60	5	5/8	1-5/8	1125

\*MCA = Minimum Circuit Ampacity      MOPD = Maximum over current protection  
 Low temp models include maximum evaporator fan load allowance.  
 Medium temp models do not include evap fan allowance. Contact Application Engineering for data if used with electric defrost evaps.



### Condensing Unit Data - V-Series

Model Number	Comp. Model Number	AMPS @ 230/3/60							AMPS @ 460/3/60					Fig.	Connect †		Net Wt. (lbs.)
		Comp.		Cond. FLA	Total Unit	MCA*	MOPD	Comp.		Cond. FLA	Total Unit	MCA*	MOPD		Liq.	Suct.	
		RLA	LRA					RLA	LRA								

#### "V" SERIES, DISCUS, R-22 Medium Temp

VID15H22	3DS-150E	59.6	275	12.8	73.4	89.0	150	29.0	138	6.4	35.9	44.0	80	3	7/8	2-1/8	1925
VID20H22	4DA-200E	66.0	308	12.8	79.8	97.0	175	33.0	154	6.4	39.9	49.0	90	3	7/8	2-1/8	1950
VID25H22	4DH-250E	82.2	428	12.8	96.0	117.0	200	41.1	214	6.4	48.0	59.0	100	3	7/8	2-1/8	2100
VID30H22	4DJ-300E	94.0	470	19.2	114.2	138.0	250	45.0	235	9.6	55.1	67.0	125	4	7/8	2-1/8	2250

#### "V" SERIES, DISCUS, R-22 Low Temp

VID15L22	4DL-150E	52.6	278	12.8	66.4	96.0	175	26.3	139	6.4	33.2	56.0	90	3	7/8	2-1/8	1925
VID22L22	4DT-220E	66.0	374	12.8	79.8	126.0	200	33.0	187	6.4	39.9	79.0	125	3	7/8	2-1/8	1940
VID27L22	6DT-270E	80.8	450	12.8	94.6	150.0	250	40.4	225	6.4	47.3	93.0	150	3	7/8	2-1/8	2075
VID30L22	6DT-300E	95.6	470	12.8	109.4	175.0	300	47.8	235	6.4	54.7	96.0	150	3	7/8	2-1/8	2165

#### "V" SERIES, DISCUS, R-404A Medium Temp

VID15M44	3DS-150E	59.6	275	12.8	73.4	89.0	150	29.0	138	6.4	35.9	44.0	80	3	7/8	2-1/8	1925
VID20M44	4DA-200E	66.0	308	12.8	79.8	97.0	175	33.0	154	6.4	39.9	49.0	90	3	7/8	2-1/8	1950
VID25M44	4DH-250E	82.2	428	12.8	96.0	117.0	200	41.1	214	6.4	48.0	59.0	100	3	7/8	2-1/8	2100
VID30M44	4DJ-300E	94.0	470	19.2	114.2	138.0	250	45.0	235	9.6	55.1	67.0	125	4	7/8	2-1/8	2250

#### "V" SERIES, DISCUS, R-404A Low Temp

VID15L44	4DL-150E	52.6	278	12.8	66.4	96.0	175	26.3	139	6.4	33.2	56.0	90	3	7/8	2-1/8	1925
VID22L44	4DT-200E	66.0	374	12.8	79.8	126.0	200	33.0	187	6.4	39.9	79.0	125	3	7/8	2-1/8	1940
VID27L44	6DT-270E	80.8	450	12.8	94.6	150.0	250	40.4	225	6.4	47.3	93.0	150	3	7/8	2-1/8	2075
VID30L44	6DT-3000	95.6	470	12.8	109.4	175.0	300	47.8	235	6.4	54.7	96.0	150	3	7/8	2-1/8	2165

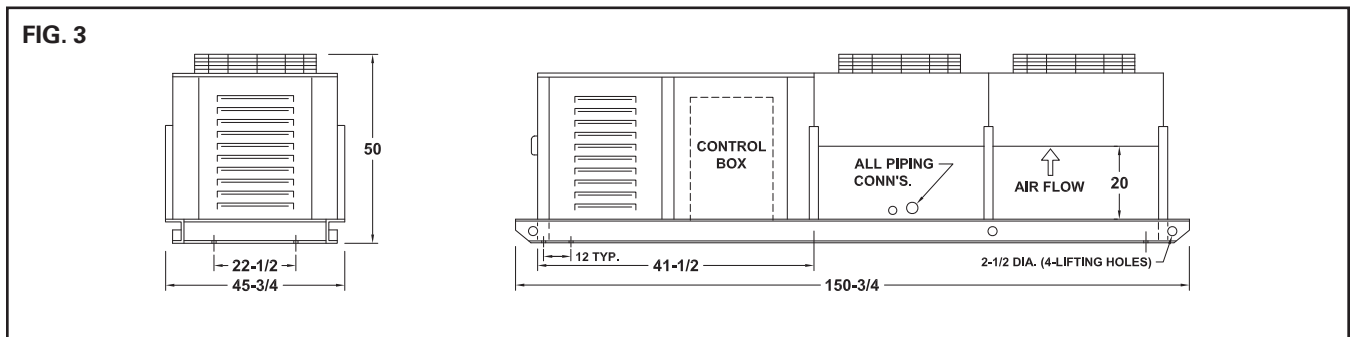
\*MCA = Minimum Circuit Ampacity

MOPD = Maximum over current protective device

LowTemp models include maximum fan load allowance.

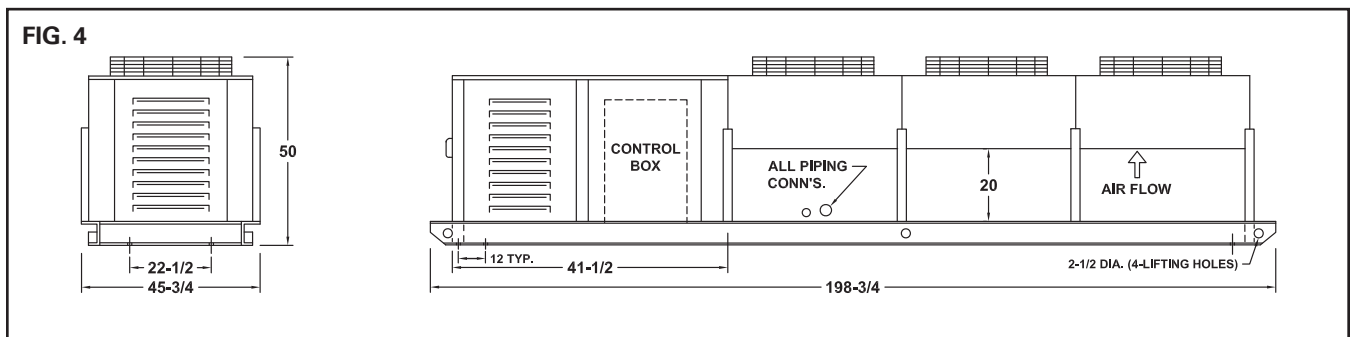
Medium temp models do not include evap fan allowance. Contact Applications Engineering for data if used with electric defrost.

### V Series 2 Fan Unit



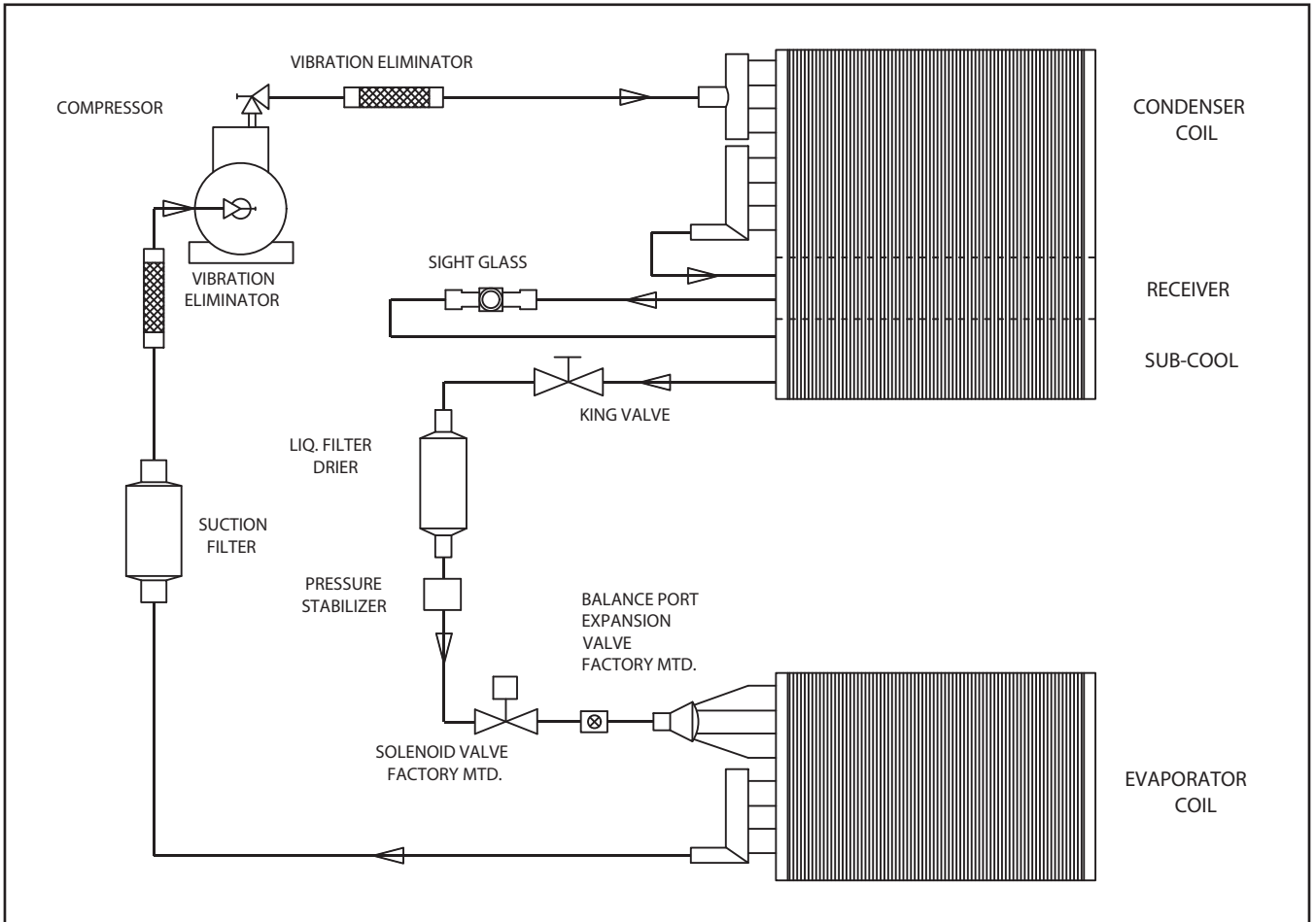
\*All dimensions are in inches.

### V Series 3 Fan Unit



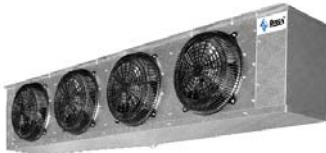
\*All dimensions are in inches.

## Sierra Piping Schematic

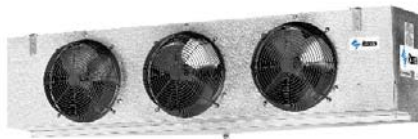


## Complete Refrigeration Packages

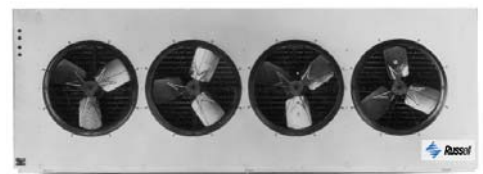
**All-Temp<sup>2</sup>B**  
Low Profile Unit Coolers



**Inter-Temp**  
Medium Profile Unit Coolers



**Ultra-Temp**  
High Capacity Warehouse Unit Coolers



**MiniCon**  
Cond. units 1/2 - 6 HP



**D-Series**  
Condensing Units 3- 15 HP



**V-Series**  
Condensing Units 20-30 HP

