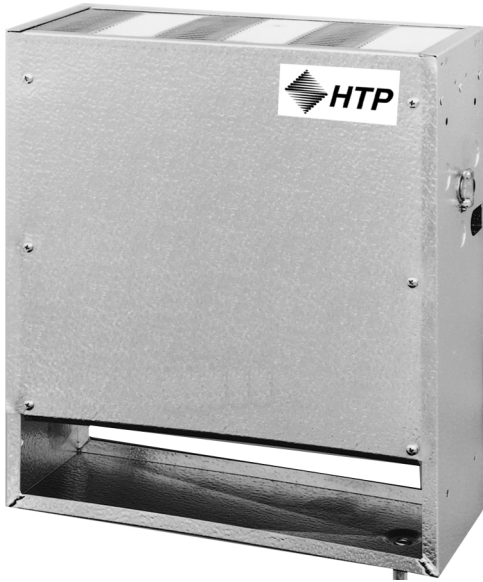


Reach-In Unit Cooler

Publication No. H122.0
September, 2000



The **Mullion-Temp** is designed to fit behind the mullion located between under counter or reach-in doors.

Mullion-Temp models are available for two airflow patterns.

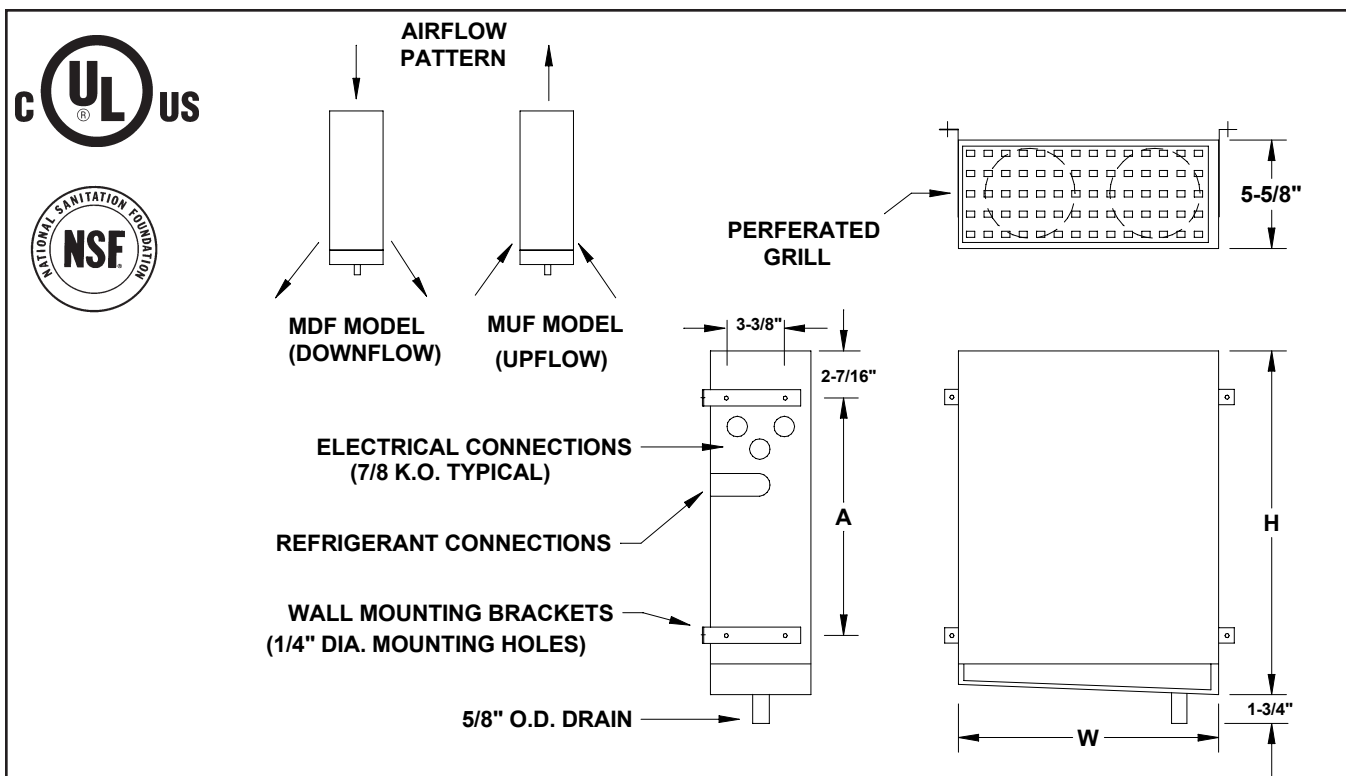
– “**MDF**” models supply a downward flow of air, ideal for beverage coolers.

– “**MUF**” models provide upward air flow, directing cold air towards drop in food trays.

All Mullion-Temp units are supplied with our specially formulated epoxy coil coating to provide superior corrosion resistance for the coil surface.

SPECIFICATIONS

MODEL NUMBER MDF/MUF	CAPACITY (Btu/hr)			CFM	MOTOR			CONNECTIONS (in.)			DIMENSIONS (IN)			APPRX SHIP WT. (LBS)
	10°F TD	15°F TD	20°F TD		QTY	AMPS 115V	AMPS 230/1	LIQUID	SUCTION	DRAIN	H	W	A	
27-13	1300	1950	2600	200	2	1.5	.8	1/2 F.N.	1/2 OD	5/8 OD	17-1/8	15-1/8	12-1/4	20
27-17	1700	2550	3400	185	2	1.5	.8	1/2 F.N.	1/2 OD	5/8 OD	17-1/8	15-5/8	12-1/4	22
37-23	2300	3450	4600	280	3	2.2	1.1	1/2 F.N.	1/2 OD	5/8 OD	17-1/8	22	12-1/4	30



Due to continuing product development, specifications are subject to change without notice.