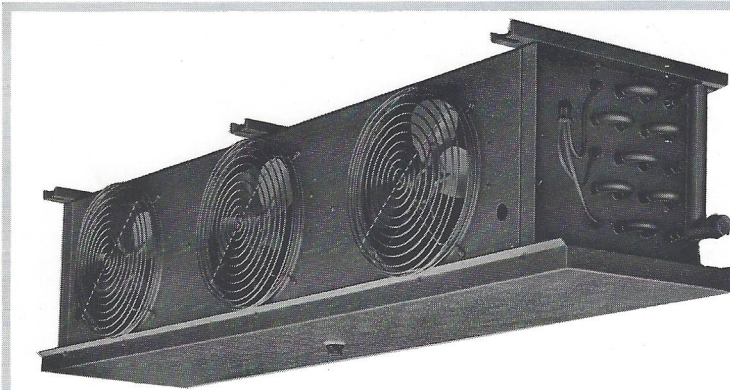


RUSSELL

COIL COMPANY

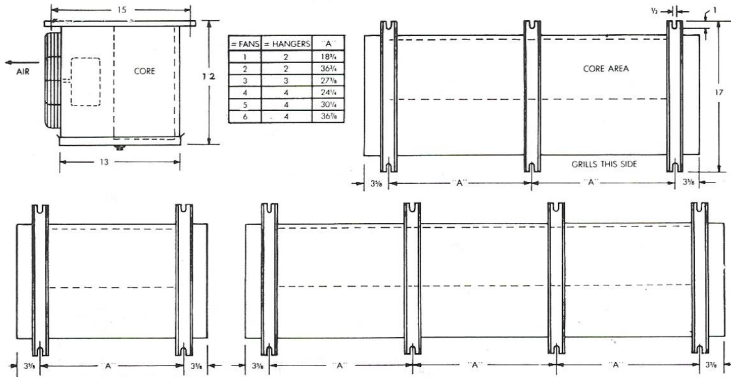
RUSSELL
MODEL "A"
COIL



THE RUSSELL ALL PURPOSE MODEL "A" COIL is now available to you in standard models with 4, 5, 6, 7 and 8 fins per inch, for a multiplicity of applications . . . from low temperature to air conditioning.

For details of outstanding features and service features, please refer to Catalogue sheet on Russell Model "B" Coil. The Model "A" Coil is similar to the Model "B," except for lesser height and smaller capacity. Like the Model "B," the Model "A" is available in 4, 5, 6, 7 and 8 fins per inch for either Hot-Gas or Electric Defrost. All "A" coil fan motors are 115 or 230 volt, 60 cycle G.E. 16 watt (1/47 H.P.)

MOUNTING
DIMENSIONS
FOR
RUSSELL
MODEL "A"
COIL
UNITS



HOT-GAS DEFROST COILS are circuited to your order for **REVERSE-CYCLE** or **RE-EVAP** application. Be sure to specify type of circuiting desired.

ALL ELECTRIC DEFROST AND HOT-GAS DEFROST COILS should be equipped with either a reverse-acting low pressure fan motor control or a temperature cut-out control to allow coil to get back to temperature after defrost period before fans are turned on.

RUSSELL MODEL "A" COIL SPECIFICATIONS

MODEL	10° -15° TD	BTU 15° TD	CFM	FANS & MOTORS	SQ. FT. SURFACE	* CIRCUITS	LIQUID CONN.	SUCTION CONN.	**230 V ELECTRIC DEFROST HEATER ELEMENT DATA	
									WATTS	AMPS.
4 FINS PER INCH FOR BELOW ZERO APPLICATIONS										
A4-27	2700	4050	380	1	79	1	1/2" FN	5/8" OD	1560	6.8
A4-52	* 5200	* 7800	760	2	158	2	5/8" OD	7/8" OD	3100	13.4
A4-80	* 8000	* 12000	1140	3	237	3	5/8" OD	1 1/8" OD	4380	19.0
A4-104	* 10400	* 15600	1520	4	316	3	5/8" OD	1 1/8" OD	5960	26.0
5 FINS PER INCH FOR ZERO TO PLUS 20° APPLICATIONS										
A5-32	3200	4800	370	1	98	1	1/2" FN	5/8" OD	1560	6.8
A5-65	* 6500	* 9750	740	2	196	2	5/8" OD	7/8" OD	3100	13.4
A5-97	* 9700	* 14500	1110	3	294	3	5/8" OD	1 1/8" OD	4380	19.0
A5-130	* 13000	* 19500	1480	4	392	3	5/8" OD	1 1/8" OD	5960	26.0
6 FINS PER INCH FOR PLUS 20° TO 40° APPLICATIONS										
A6-38	3800	5700	360	1	116	1	1/2" FN	5/8" OD	1560	6.8
A6-77	* 7700	* 11550	720	2	232	2	5/8" OD	7/8" OD	3100	13.4
A6-116	* 11600	* 17400	1080	3	348	3	5/8" OD	1 1/8" OD	4380	19.0
A6-154	* 15400	* 23100	1440	4	464	3	5/8" OD	1 1/8" OD	5960	26.0
7 FINS PER INCH FOR 40° AND ABOVE										
A7-43	4300	* 6600	350	1	134	1	1/2" FN	5/8" OD	7 & 8 FINS PER INCH NOT RECOMMENDED FOR APPLICATIONS BELOW 38°	
A7-86	* 8600	* 13350	750	2	268	2	5/8" OD	7/8" OD		
A7-129	* 12900	* 19995	1050	3	402	3	5/8" OD	1 1/8" OD		
A7-172	* 17200	* 26250	1400	4	536	3	5/8" OD	1 1/8" OD		
8 FINS PER INCH FOR CUTTING ROOMS AND AIR CONDITIONING										
A8-48	4800	* 7200	340	1	148	1	1/2" FN	5/8" OD	7 & 8 FINS PER INCH NOT RECOMMENDED FOR APPLICATIONS BELOW 38°	
A8-96	* 9600	* 14400	680	2	296	2	5/8" OD	7/8" OD		
A8-144	* 14400	* 21600	1020	3	444	3	5/8" OD	1 1/8" OD		
A8-192	* 19200	* 28800	1360	4	592	3	5/8" OD	1 1/8" OD		

* Requires externally equalized TX valve, for more than one circuit.
N.B. All drain connections 3/4 MPT.

**115 V. heater elements available on special order.

RUSSELL COIL COMPANY, 11711 EAST SLAUSON AVE., SANTA FE SPRINGS, CALIF. · OX 3-7751 · RA 3-4519