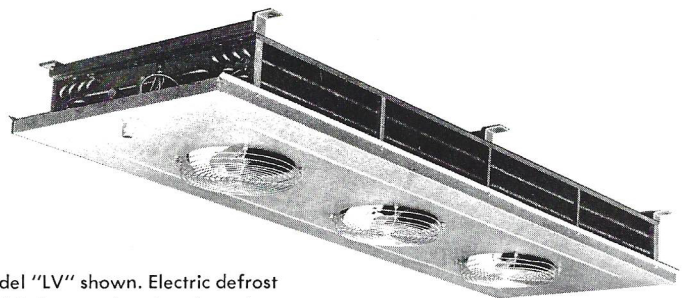


RUSSELL COIL COMPANY

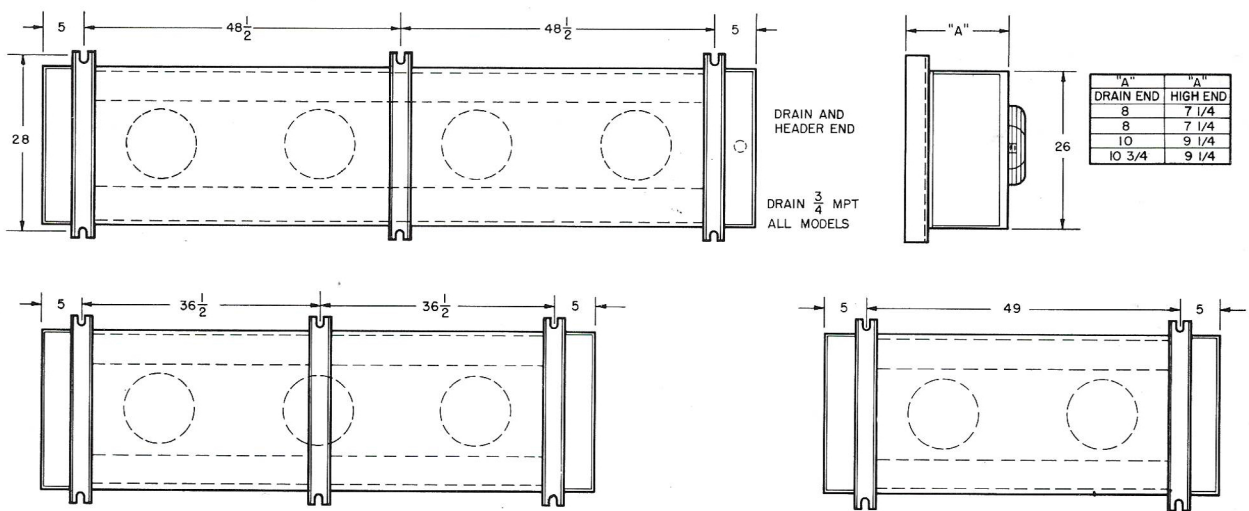
RUSSELL
"LV" MODEL
COILS



Model "LV" shown. Electric defrost models have enclosed end panels.

THE RUSSELL MODEL "LV" COIL is a low height, two-way discharge coil specifically designed for above 34° Meat-Cutting and Meat-Holding Rooms; for above the partition in combination Florist Display and Storage boxes; and for comparable applications where high humidity is demanded. Electric Defrost models (ELV) are offered for other areas requiring from +25° to +34° temperatures.

MOUNTING DIMENSIONS FOR RUSSELL MODEL "LV" COIL UNITS



COIL SPECIFICATIONS

MODEL * NO.	BTUH		CFM	FAN	MOTOR DATA				NO. CIR.	CONNECTIONS			ELEC. DEFROST MODELS (ELV)	
	10°	15°			HP	RPM	AMPS			SUCT.	LIQ.	HOT GAS	WATTS	AMPERES 230V
	115V	230V												
LV-67	6700	10050	1130	2-10"	2-1/30	1550	3.4	1.7	4	7/8" OD	5/8" OD	5/8" OD	3940	17.2**
LV-100	10000	15000	1680	3-10"	3-1/30	1550	5.1	2.55	4	7/8" OD	5/8" OD	5/8" OD	5960	18.3***
LV-135	13500	20250	2270	3-12"	3-1/30	1550	5.1	2.55	4	7/8" OD	5/8" OD	7/8" OD	5960	18.3***
LV-180	18000	27000	3050	4-12"	4-1/30	1550	16.0	8.0	8	1 1/8" OD	7/8" OD	7/8" OD	8060	24.2***

* All models require externally equalized valve.
 ** Factory wired for 1φ.
 *** Factory wired for 3φ.
 (1φ heater wiring only if ordered.)

N.B. (1) Coils standard circuited for R-12.
 Please specify if other refrigerant to be used.
 (2) All fan motors wired 1φ only.
 All drain connections 3/4" MPT.