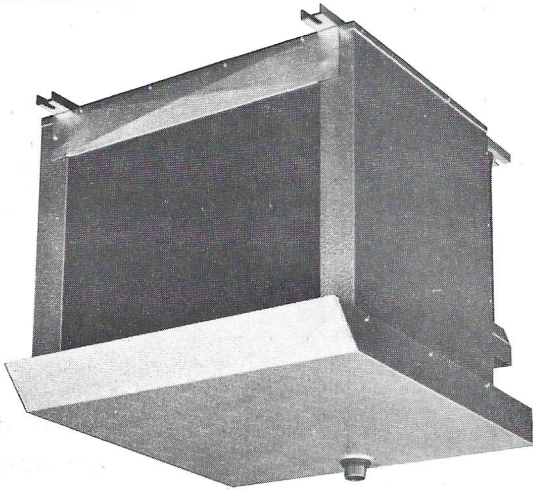


russell

QUICK-TEMP LOW-TEMP WATER DEFROST UNIT COOLERS

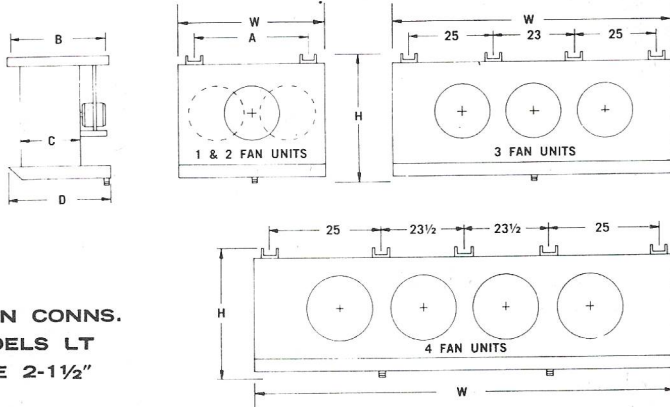


For low temperature applications where rapid defrosting by tap water is desired. Except for copper tubing, Russell Water Defrost Coils feature heavy gauge all-aluminum construction, with aluminum fins spaced 4 per inch, on 5/8" OD copper tubes.

All motors are 1050 RPM for high efficiency air moving and low noise level.

Standard circuiting is for R-12. Specify when ordering if for R-22 or R-502 application.

DIMENSION DIAGRAM



N.B. ALL DRAIN CONNS.
1 1/2" MPT. MODELS LT
600, 720 HAVE 2-1 1/2"
MPT. CONNS.

DIMENSIONS

Model	A	B	C	D	H	W
QU14-35	16	27	16	26	21 1/2	21
QU14-45	21	27	18	26	21 1/2	26
QU14-55	21	27	18	28	21 1/2	26
QU14-65	21	27	18	28	23 1/2	26
QU14-75	25	27	18	28	23 1/2	30
QU14-85	25	27	18	28	25 1/2	30
QU14-105	25	30	21	31	25 1/2	30
QU14-120	31	30	21	31	25 1/2	36
*QU14-150	31	30	21	31	29 1/2	36
*QU24-180	44	30	21	31	25 1/2	50
*QU24-210	44	30	21	31	29 1/2	50
*QU24-240	49	30	21	31	29 1/2	56
*QU24-300	49	30	21	31	33 1/2	56
*QU34-360		30	21	31	29 1/2	80
*QU34-450		30	21	31	35 1/2	80
*QU44-600		30	21	31	35 1/2	105
*QU44-720		30	21	31	41 1/2	105

SPECIFICATIONS

Model	BTU/HR. RATING F-12		Total Surf. Ft. ²	Circuits	Fan Dia.	Motor H.P.	C.F.M.
	10° T.D.	15° T.D.					
QU14-35	3,500	5,250	105	1	14"	1/30	845
QU14-45	4,500	6,750	135	1	14"	1/12	900
QU14-55	5,500	8,250	167	1	14"	1/12	1050
QU14-65	6,500	9,750	198	1	16"	1/12	1300
QU14-75	7,500	11,250	227	Split	16"	1/12	1500
QU14-85	8,500	12,750	255	Split	18"	1/6	1700
QU14-105	10,500	15,750	316	Split	18"	1/4	1980
QU14-120	12,000	18,000	362	Split	18"	1/4	2300
*QU14-150	15,000	22,500	460	4	20"	1/4	2500
*QU24-180	18,000	27,000	544	5	2-18"	1/6	3000
*QU24-210	21,000	31,500	653	6	2-18"	1/6	3300
*QU24-240	24,000	36,000	728	6	2-20"	1/6	4100
*QU24-300	30,000	45,000	926	7	2-20"	1/6	4800
*QU34-360	36,000	54,000	1093	6	3-20"	1/6	5800
*QU34-450	45,000	67,500	1356	9	3-20"	1/4	7380
*QU44-600	60,000	90,000	1821	15	4-20"	1/4	9750
*QU44-720	72,000	108,000	2186	18	4-20"	1/4	12000

*EXTERNAL EQUALIZER TYPE VALVES REQUIRED

CONNECTION SIZES

COIL INLET	SUCTION	WATER SUPPLY
1/2" ODS	5/8" ODS	3/8" ODS
1/2" ODS	5/8" ODS	1/2" ODS
1/2" ODS	5/8" ODS	1/2" ODS
1/2" ODS	5/8" ODS	1/2" ODS
1/2" ODS	7/8" ODS	1/2" ODS
1/2" ODS	7/8" ODS	1/2" ODS
1/2" ODS	7/8" ODS	5/8" ODS
7/8" ODS	1 3/8" ODS	5/8" ODS
7/8" ODS	1 3/8" ODS	3/4" ODS
7/8" ODS	1 5/8" ODS	3/4" ODS
7/8" ODS	1 5/8" ODS	3/4" ODS
7/8" ODS	1 5/8" ODS	3/4" ODS
7/8" ODS	1 5/8" ODS	3/4" ODS
1 3/8" ODS	2 1/8" ODS	3/4" ODS
1 3/8" ODS	2 3/8" ODS	3/4" ODS
1 3/8" ODS	2 3/8" ODS	3/4" ODS

Russell Coil Company
221 South Berry Street, Brea, California 92621
Brea (714) 529-1935 / LA (213) 691-3246

A subsidiary of Ardco Inc.