

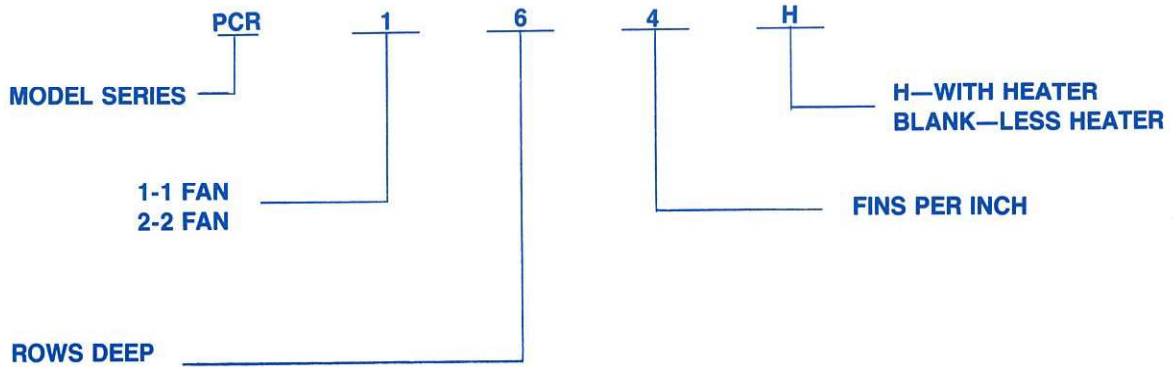
**Ripening Room  
Product Coolers**

Bulletin 600.2



Designed Expressly for Storage & Ripening -  
Bananas  
Tomatoes

## NOMENCLATURE



## STANDARD FEATURES

### CENTRIFUGAL BLOWERS

- Oversized Class II blower wheels
- High CFM per Ton
- Low brake horsepower
- 200,000 hour pillow-block bearings
- Extended bearing lube lines
- Thermally protected drive motors
- Fixed drive sheaves

### COOLING COILS

- High capacity DX Halocarbon
- 1/2" OD copper tube, aluminum fins
- Multi-circuit w/refrigerant distributor
- Fixed air bypass for precise air velocity

### UNIT CASING

- Industrial grade construction throughout
- All-galvanized casing parts
- Nut and bolt final assembly

### SERVICE AND MAINTENANCE ACCESS

- Large drive-side door w/life-off hinges
- Bearing access panel opposite drive side
- Removable blower section bottom panel
- Removable air bypass grills (each side)
- Easy replacement-Wheel & shaft

### ETL LISTING

- Standard on unit and all catalog options

## OPTIONAL FEATURES

### ELECTRIC HEAT SECTION

- Stainless steel sheath heater elements
- Blower discharge mounting
- Two safety thermostats - manual reset
- ETL Listed

### SINGLE POINT WIRING

- One conduit to J-Box distribution point

### SYSTEM CONTROL PANEL

- All power components for Product Cooler
- All system control components (as required)
- ETL Listed

### COOLING COIL OPTIONS

- Hot gas bypass provision
- Special tube/fin materials
- Glycol coils (used with Ammonia chillers)
- Rows up to 12 deep

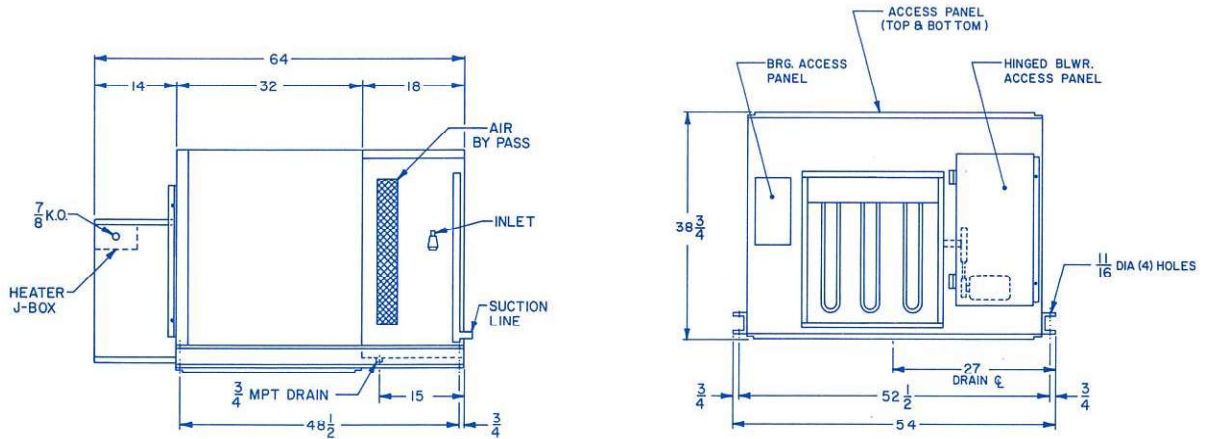
## ORDERING INFORMATION

- Complete Model Number
- Room Temperature
- Suction Temperature
- Electrical Characteristics
- Options Required
  - Hot Gas Bypass Provision
  - Electric Heat Section
  - Single Point Wiring
  - System Control Panel
  - Others (Specify)

# Product Cooler

## TECHNICAL DATA

### SINGLE FAN UNITS Nominal Half Carlot Capacity



## PHYSICAL DATA

MODEL PCR	ROWS DEEP	FPI	CONNECTION SIZE - R-22		NET WEIGHT LBS.
			INLET-OD	OUTLET-OD	
144	4	4	7/8	7/8	527
154	5		7/8	7/8	553
164	6		7/8	1-1/8	570
146	4	6	7/8	7/8	567
156	5		7/8	1-1/8	593
166	6		7/8	1-1/8	610

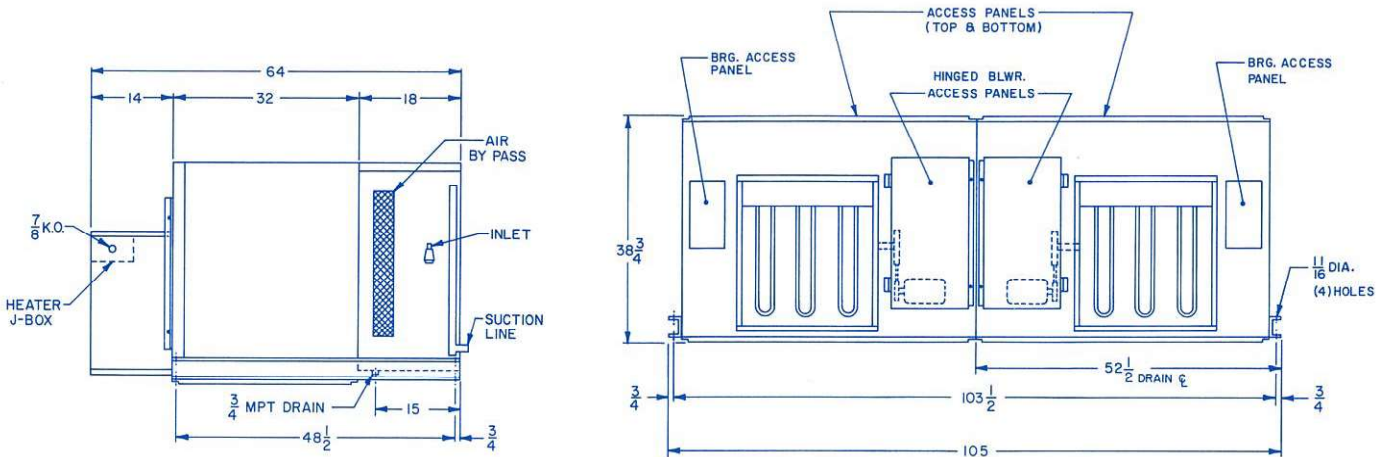
ALL MODELS: 7800 CFM  
2 H.P. FAN MOTOR  
6 KW (OPTIONAL) ELECTRIC HEAT

## PERFORMANCE DATA - BTUH COOLING

MODEL PCR	70 ° ROOM 60 ° S.T.	60 ° ROOM 50 ° S.T.	55 ° ROOM 45 ° S.T.	55 ° ROOM 40 ° S.T.	35 ° ROOM 25 ° S.T.
144	34600	31400	30300	49700	27500
154	41600	37600	36200	59400	32700
164	48000	43300	41600	68100	37400
146	40400	37100	35900	59300	33200
156	48200	44100	42500	70000	39100
166	55200	50300	48400	79500	44100

## TECHNICAL DATA

### DOUBLE-FAN UNITS Nominal Full Carlot Capacity



## PHYSICAL DATA

MODEL PCR	ROWS DEEP	FPI	CONNECTION SIZE - R-22		NET WEIGHT LBS.
			INLET-OD	OUTLET-OD	
244	4	4	1-1/8	1-3/8	1060
254	5		1-1/8	1-3/8	1114
264	6		1-1/8	1-3/8	1150
246	4	6	1-1/8	1-3/8	1140
256	5		1-1/8	1-3/8	1194
266	6		1-3/8	1-5/8	1230

ALL MODELS: 15600 CFM  
(2) 2 H.P. FAN MOTOR  
12 KW (OPTIONAL) ELECTRIC HEAT

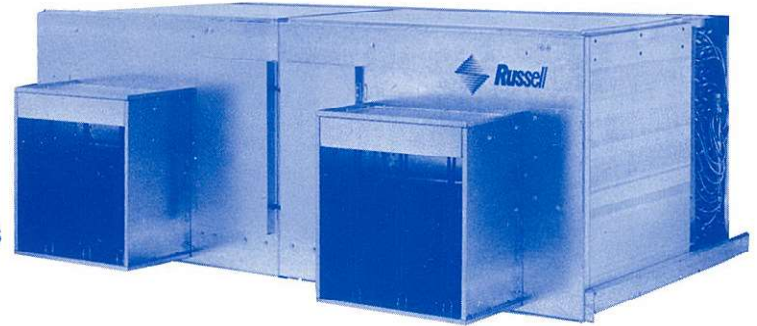
## PERFORMANCE DATA - BTUH COOLING

MODEL PCR	70 ° ROOM 60 ° S.T.	60 ° ROOM 50 ° S.T.	55 ° ROOM 45 ° S.T.	55 ° ROOM 40 ° S.T.	35 ° ROOM 25 ° S.T.
244	75700	68700	66300	108700	60100
254	91000	82200	79200	129900	71500
264	105000	94700	91000	148900	81800
246	88300	81100	78500	129700	72600
256	105400	96400	92900	153100	85500
266	120700	110000	105800	173900	96400

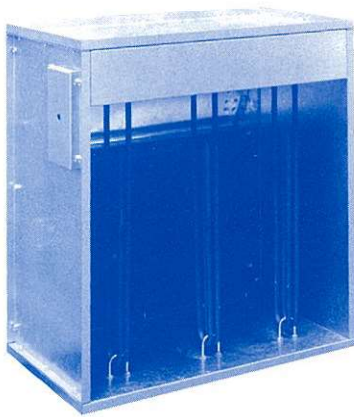
# Product Cooler

## Industrial Grade Construction

- Oversized Class II blower wheels
- 200,000 Hour pillow block bearings
- Extra heavy gage panels & structural members
- Nut and bolt construction
- Removable bottom panel for 'Inside-Out' coil cleaning

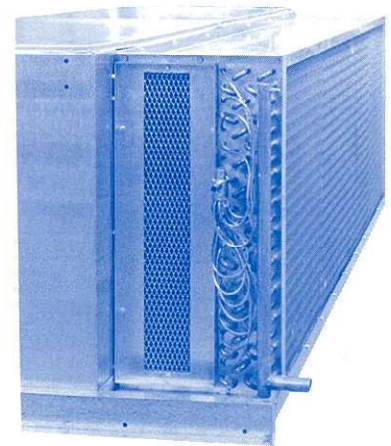


One Carlot Unit



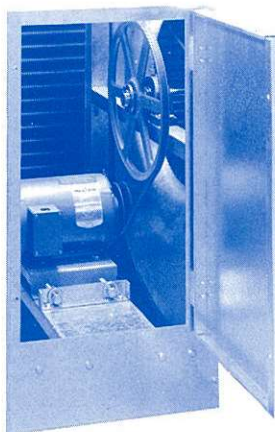
## Heater Section (ETL Listed)

Optional electric heat section features stainless steel sheath heater elements for corrosion-free long life.



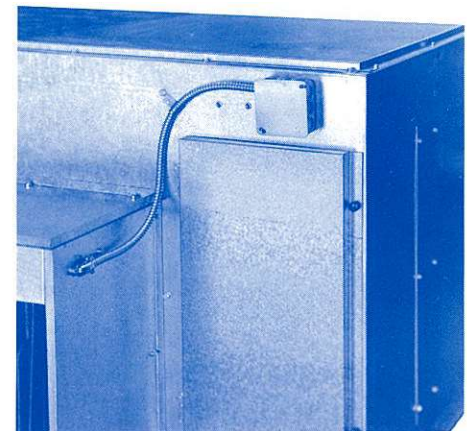
## Direct Expansion Cooling Coil

High capacity, low static loss, multi-circuited evaporator. Air bypass grill assembly doubles as additional access opening for coil cleaning.



## Drive Side Service Access

Large access door with 'Lift-Off' hinges



## Single Point Wiring Option

One conduit run to junction box distribution point provides all power and control wiring connections.

## CONTROL PANEL OPTIONS

The model RCB control panel is available in the configurations needed for most installations.

### TYPE I - POWER PANEL ONLY

- Main Fused Disconnect w/Door Interlock
- Product Cooler Fan Motor Contactor
- Product Cooler Heater Contactor (As Required)
- Control Transformer (As Required)
- Control Terminal Block
- Heavy Gage Galvanized Casing

For use with solid state thermostat/mode selector module (by others).

### TYPE II - COMPLETE PANEL

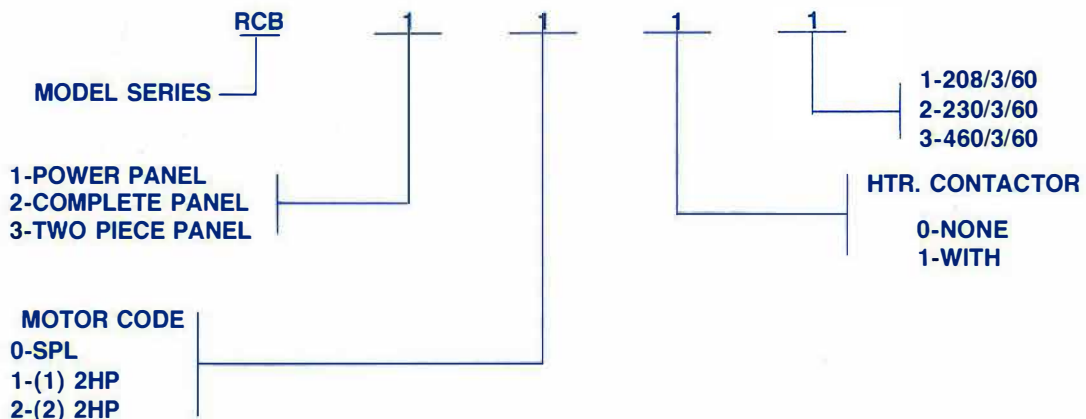
- Ripening Room Thermostats
- Five Position Mode Selector Switch
- Mode Indicator Pilot Lights
- Control Viewing Window
- Separate Control Access Door w/Key Lock
- All Components Furnished w/Type I

For use on installations in which the control panel can be mounted outside the ripening room, near the Product Cooler return air stream for remote bulb temperature sensing.

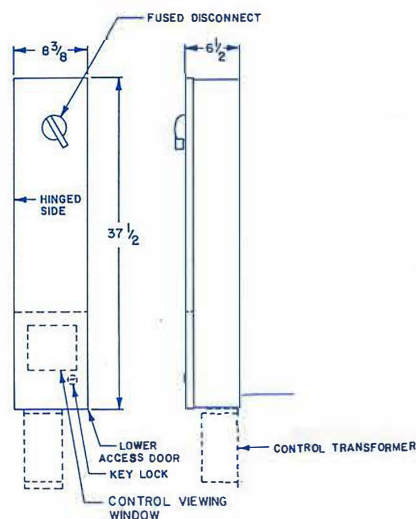
### TYPE III - MAIN PANEL + REMOTE CONTROL MODULE (Not ETL Listed)

- Main Panel  
Same as Type I above
- Remote Control Module  
Control Components - Same as Type II above  
Galvanized Casing  
Control Viewing Window  
Keylock Door

For use on installations in which available control mounting area is too small for Type II panel mount (e.g. narrow mullion between rooms). Remote control module is designed to fit for either flush or recess mount.



### TYPE I TYPE II



### TYPE III REMOTE CONTROL MODULE

