



Single fan vertical
air discharge model.

SAC 1-12 Tons

1140 RMP MOTORS

SEQ 1- 9 Tons

850 RMP MOTORS

Technical Bulletin 420.0

February, 2003



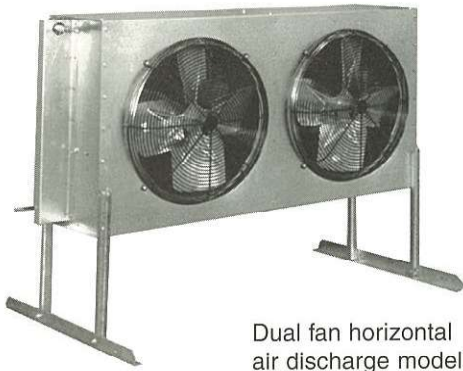
CONDENSER CAPACITIES (MBH)

Model	R - 22 / TD						R - 404A / TD					
	1°	10°	15°	20°	25°	30°	1°	10°	15°	20°	25°	30°
SAC-1	0.7	6.7	10.1	13.5	16.8	20.2	0.7	6.6	9.9	13.2	16.5	19.8
SAC-2	1.1	11.4	17.1	22.8	28.6	34.3	1.1	11.2	16.8	22.4	28.0	33.6
SAC-4	1.8	18.5	27.7	36.9	46.2	55.4	1.8	18.1	27.2	36.2	45.3	54.3
SAC-5	2.4	24.7	36.6	48.9	60.5	72.5	2.4	23.7	35.6	47.4	59.3	71.1
SAC-8	3.7	36.8	55.3	73.6	92.1	110.5	3.6	36.1	54.2	72.2	90.3	108.3
SAC-10	4.8	48.3	72.5	96.7	120.9	145.0	4.7	47.4	71.1	94.8	118.5	142.2
SAC-12	5.5	55.4	83.1	110.8	138.5	166.2	5.4	54.3	51.5	108.6	135.8	162.9
Model	1°	10°	15°	20°	25°	30°	1°	10°	15°	20°	25°	30°
SEQ-1	0.6	6.4	9.6	12.7	15.9	19.1	0.6	6.2	9.4	12.5	15.6	18.7
SEQ-2	1.0	10.0	15.0	20.0	25.0	30.0	1.0	9.8	14.7	19.6	24.5	29.4
SEQ-3	1.6	15.7	23.5	31.3	39.2	47.0	1.5	15.4	23.0	30.7	38.4	46.1
SEQ-4	2.0	20.2	30.3	40.3	50.4	60.5	2.0	19.8	29.6	39.5	49.4	59.3
SEQ-6	3.1	31.2	46.9	62.5	78.1	93.7	3.1	30.6	45.9	61.2	76.5	91.8
SEQ-8	4.0	40.4	60.6	80.7	100.9	121.1	4.0	39.6	59.3	79.1	98.9	118.7
SEQ-9	4.4	44.4	66.7	88.9	111.1	133.3	4.4	43.5	65.3	87.1	108.9	130.6

MODEL DATA

Model	Fan Data			Motor Data*					Ref. Charge				
	Qty.	Diam.	Total CFM	Nom. HP	208/230/1 Amps	208/230/3 Amps	460/3 Amps	575/1 Amps	Max Cir. Qty.	R-22 Per Cir.	R-22 Total	R-404A Per Cir.	R-404A Total
SAC-1	1	18"	3100	1/2	2.5	2.0	1.0	1.0	20	0.02	0.45	0.02	0.39
SAC-2	1	18"	2750	1/2	2.5	2.0	1.0	1.0	20	0.05	0.90	0.04	0.77
SAC-4	1	22"	3850	1/2	2.5	2.0	1.0	1.0	24	0.05	1.20	0.04	1.03
SAC-5	1	22"	3700	1/2	2.5	2.0	1.0	1.0	24	0.08	1.95	0.07	1.68
SAC-8	2	22"	7700	1/2	5.0	4.0	2.0	2.0	24	0.11	2.60	0.09	2.24
SAC-10	2	22"	7400	1/2	5.0	4.0	2.0	2.0	24	0.16	3.80	0.14	3.27
SAC-12	2	22"	7000	1/2	5.0	4.0	2.0	2.0	24	0.22	5.30	0.19	4.56
SEQ-1	1	18"	2540	1/4	1.4	1.4	0.6	N/A	20	0.02	0.45	0.02	0.39
SEQ-2	1	18"	2040	1/4	1.4	1.4	0.6	N/A	20	0.05	0.90	0.04	0.77
SEQ-3	1	22"	2850	1/4	1.4	1.4	0.6	N/A	24	0.05	1.20	0.04	1.03
SEQ-4	1	22"	2740	1/4	1.4	1.4	0.6	N/A	24	0.08	1.95	0.07	1.68
SEQ-6	2	22"	5700	1/4	2.8	2.2	1.2	N/A	24	0.11	2.60	0.09	2.24
SEQ-8	2	22"	5480	1/4	2.8	2.2	1.2	N/A	24	0.16	3.80	0.14	3.27
SEQ-9	2	22"	5110	1/4	2.8	2.2	1.2	N/A	24	0.22	5.30	0.16	4.56

* All SAC motors are 1140RPM / All SEQ motors are 850 RPM



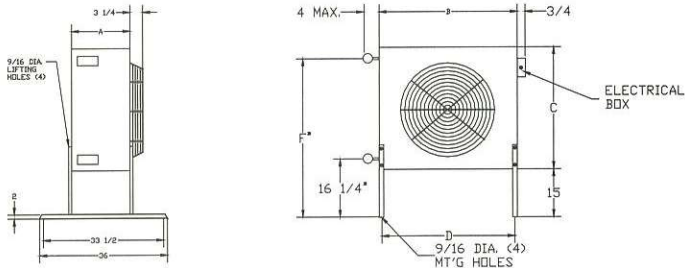
Dual fan horizontal air discharge model.

Dimensions

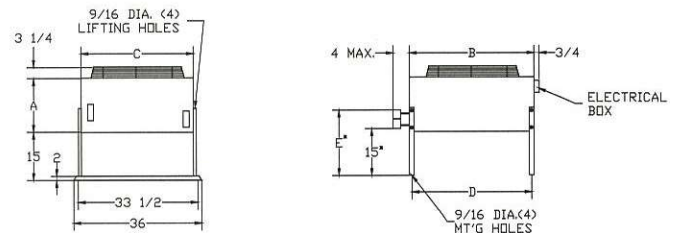
Model								Weight (lbs.)	
SAC	SEQ	A	B	C	D	E	F	Net	Shipping
1	1	12 9/16	28	25 5/8	26 1/2	15	40	109	153
2	2	12 9/16	28	25 5/8	26 1/2	16 1/2	40	121	165
4	3	14 1/2	33	30 5/8	31 1/5	16 1/2	45	144	188
5	4	14 1/2	33	30 5/8	31 1/2	17 1/2	45	160	204
8	6	14 1/2	—	—	—	—	—	234	303
10	8	14 1/2	—	—	—	—	—	259	328
12	9	15 3/4	—	—	—	—	—	283	352

Drawing - 1 FAN

Horizontal Discharge



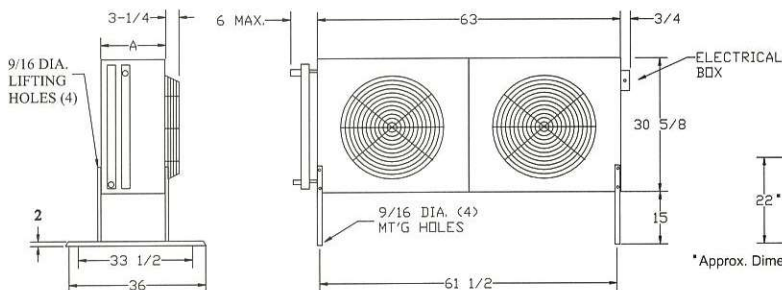
Vertical Discharge



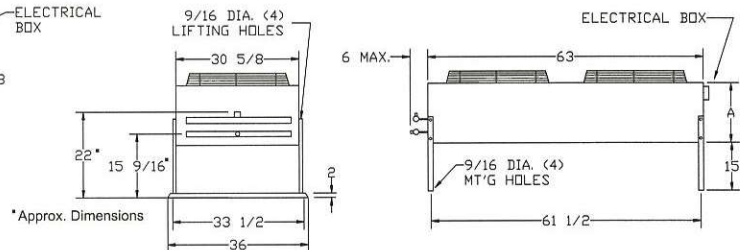
* Approximate

Drawing - 2 FAN

Horizontal Discharge



Vertical Discharge



* Approx. Dimensions